

Anti-Alpha-Synuclein SNCA Antibody

Catalog Number: M00215-3

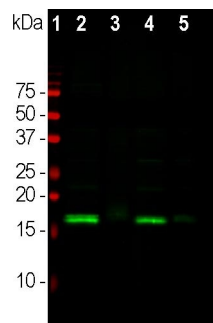
Overview

Product Name	Anti-Alpha-Synuclein SNCA Antibody
Reactive Species	Cow, Human, Mouse, Pig, Rat, Horse
Description	Boster Bio Anti-Alpha-Synuclein SNCA Antibody catalog # M00215-3. Tested in IF, IHC, ICC, WB applications. This antibody reacts with Cow, Human, Mouse, Pig, Rat, Horse.
Application	IF, IHC, ICC, WB
Clonality	Polyclonal
Formulation	Affinity purified antibody at 1mg/mL in 50% PBS, 50% glycerol plus 5mM NaN ₃
Storage Instructions	Store at -20°C for one year. For short term storage and frequent use, store at 4°C for up to one month. Avoid repeated freeze-thaw cycles.
Host	Chicken
Uniprot ID	P37840

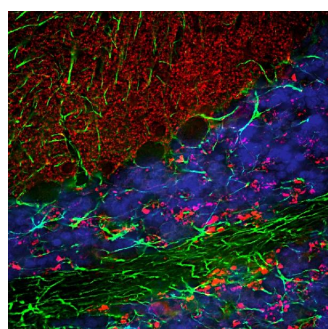
Technical Details

Immunogen	Full length recombinant human protein expressed in and purified from E. coli
Concentration	0.5-1mg/ml, actual concentration vary by lot. Use suggested dilution ratio to decide dilution procedure.
Suggested Dilutions	<p>Dilute the sample so that the expected range of concentrations fall within the detection range of this kit.</p> <p>If the expected range of concentration is unknown, a pilot test should be conducted to decide the optimal dilution ratio for your samples.</p> <p>Some PubMed article(s) citing the expression level of this target are as follows:</p> <p>Boster Bio's internal QC testing used:</p> <p>WB: 1:2,000 IF/ICC and IHC: 1:1,000</p>

Anti-Alpha-Synuclein SNCA Antibody (M00215-3) Images



Western blot analysis of different tissue lysates using chicken pAb to -synuclein, M00215-3, dilution 1:2,000 in green: [1] protein standard (red), [2] rat brain, [3] rat spinal cord, [4] mouse brain, [5] mouse spinal cord. The strong band at about 15kDa corresponds to the -synuclein protein in brain extracts, which are rich in synapses, while a weaker band is seen in spinal cord extracts where synapses are a more minor component.



Immunofluorescent analysis of a section of rat cerebellum stained with chicken pAb to -synuclein, M00215-3, dilution 1:3,000 in red, and costained with rabbit pAb to GFAP, dilution 1:5,000 in green. The blue is DAPI staining of nuclear DNA. Following transcardial perfusion of rat with 4% paraformaldehyde, brain was post fixed for 24 hours, cut to 45M, and free-floating sections were stained with above antibodies. The -synuclein protein is concentrated in presynaptic regions in the granular and molecular layers, while GFAP antibody stains the network of Bergmann and astroglial cells.

1 Publications Citing This Product

1. PubMed ID: 10.1021/acsbiomaterials.0c01474, Synthesis of Double Interfering Biodegradable Nano-MgO Micelle Composites and Their Effect on Parkinson's Disease

Visit bosterbio.com/anti-alpha-synuclein-antibody-m00215-3-boster.html to see all 1 publications.

Submit a product review to Biocompare.com

Submit a review of this product to Biocompare.com to receive a \$20 Amazon.com giftcard! Your reviews help your fellow scientists make the right decisions. Thank you for your contribution.



Anti-Alpha-Synuclein SNCA Antibody