

## Anti-FTO Mouse Monoclonal Antibody [Clone ID: OTI4A1]

Catalog Number: M00219-1

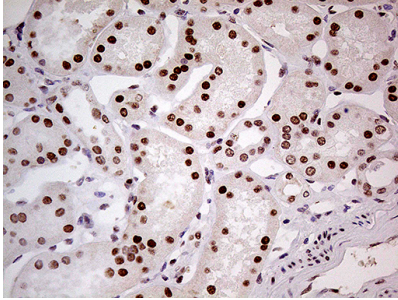
### Overview

Product Name	Anti-FTO Mouse Monoclonal Antibody [Clone ID: OTI4A1]
Reactive Species	Human, Mouse, Rat
Description	Boster Bio FTO mouse monoclonal antibody, clone OTI4A1. Catalog# M00219-1. Tested in IHC, WB. This antibody reacts with Human, Mouse, Rat.
Conjugate	Unconjugated
Application	IHC, WB
Clonality	Monoclonal OTI4A1
Formulation	PBS (pH 7.3) containing 1% stabilizing protein, 50% glycerol and 0.02% sodium azide. This antibody is supplied in a stabilized formulation. Compatibility with conjugation reactions depends on the chemistry of the conjugation method used. For conjugation methods that are not compatible with the stabilizing components present in this formulation, a carrier-free antibody format is required.
Storage Instructions	Store at -20°C for one year. For short term storage and frequent use, store at 4°C for up to one month. Avoid repeated freeze-thaw cycles.
Host	Mouse
Uniprot ID	Q9C0B1

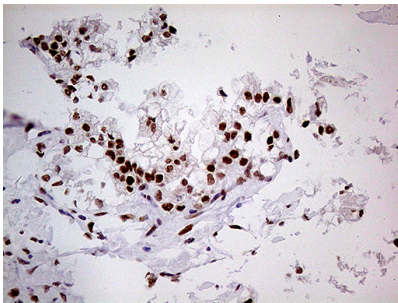
### Technical Details

Immunogen	Full length human recombinant protein of human FTO (NP_001073901) produced in HEK293T cell.
Isotype	IgG1
Concentration	1 mg/ml
Purification	Purified from mouse ascites fluids or tissue culture supernatant by affinity chromatography (protein A/G)
Suggested Dilutions	WB 1:500~2000 IHC 1:500

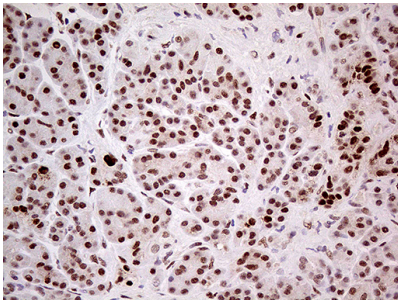
## Anti-FTO Mouse Monoclonal Antibody [Clone ID: OTI4A1] (M00219-1) Images



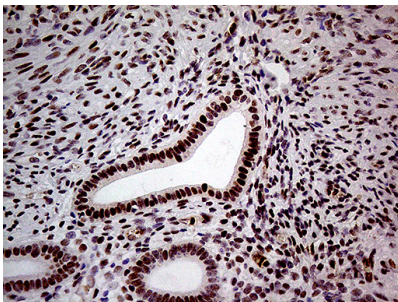
Immunohistochemical staining of paraffin-embedded Human Kidney tissue within the normal limits using anti-FTO mouse monoclonal antibody. (Heat-induced epitope retrieval by 1mM EDTA in 10mM Tris buffer (pH8.5) at 120°C for 3min)



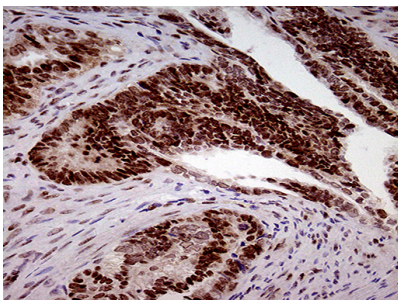
Immunohistochemical staining of paraffin-embedded Adenocarcinoma of Human ovary tissue using anti-FTO mouse monoclonal antibody. (Heat-induced epitope retrieval by 1mM EDTA in 10mM Tris buffer (pH8.5) at 120°C for 3min)



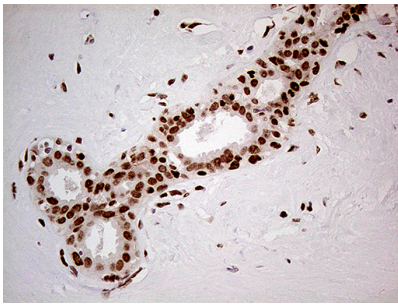
Immunohistochemical staining of paraffin-embedded Human pancreas tissue within the normal limits using anti-FTO mouse monoclonal antibody. (Heat-induced epitope retrieval by 1mM EDTA in 10mM Tris buffer (pH8.5) at 120°C for 3min)



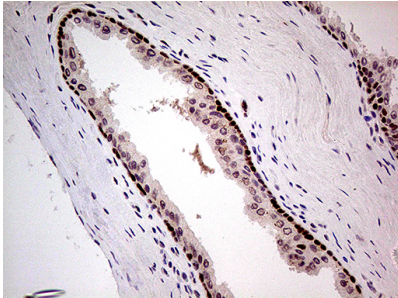
Immunohistochemical staining of paraffin-embedded Human endometrium tissue within the normal limits using anti-FTO mouse monoclonal antibody. (Heat-induced epitope retrieval by 1mM EDTA in 10mM Tris buffer (pH8.5) at 120°C for 3min)



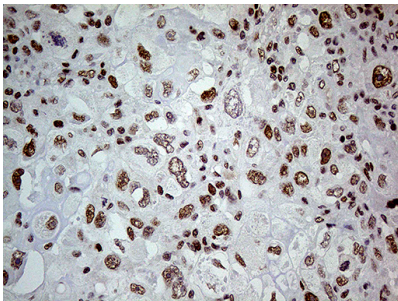
Immunohistochemical staining of paraffin-embedded Adenocarcinoma of Human endometrium tissue using anti-FTO mouse monoclonal antibody. (Heat-induced epitope retrieval by 1mM EDTA in 10mM Tris buffer (pH8.5) at 120°C for 3min)



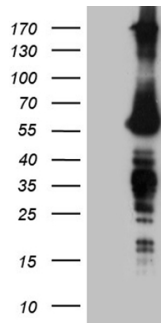
Immunohistochemical staining of paraffin-embedded Human breast tissue within the normal limits using anti-FTO mouse monoclonal antibody. (Heat-induced epitope retrieval by 1mM EDTA in 10mM Tris buffer (pH8.5) at 120Å°C for 3min)



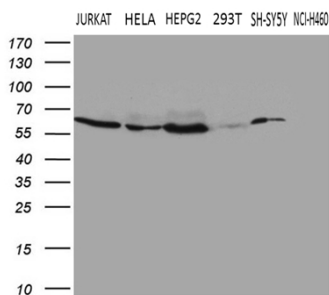
Immunohistochemical staining of paraffin-embedded Carcinoma of Human prostate tissue using anti-FTO mouse monoclonal antibody. (Heat-induced epitope retrieval by 1mM EDTA in 10mM Tris buffer (pH8.5) at 120Å°C for 3min)



Immunohistochemical staining of paraffin-embedded Adenocarcinoma of Human breast tissue using anti-FTO mouse monoclonal antibody. (Heat-induced epitope retrieval by 1mM EDTA in 10mM Tris buffer (pH8.5) at 120Å°C for 3min)



HEK293T cells were transfected with the pCMV6-ENTRY control (Left lane) or pCMV6-ENTRY FTO (Right lane) cDNA for 48 hrs and lysed. Equivalent amounts of cell lysates (5 ug per lane) were separated by SDS-PAGE and immunoblotted with anti-FTO (1:2000).



Western blot analysis of extracts (35ug) from 6 different cell lines by using anti-FTO monoclonal antibody (1:500).

Submit a review of this product to Biocompare.com to receive a \$20 Amazon.com giftcard! Your reviews help your fellow scientists make the right decisions. Thank you for your contribution.



Anti-FTO Mouse Monoclonal Antibody [Clone ID: OTI4A1]

For Research Use Only. Not for use in diagnostic procedures.