

Anti-AXL Antibody (C-term)

Catalog Number: M00226

About AXL

Receptor tyrosine kinase that transduces signals from the extracellular matrix into the cytoplasm by binding growth factor GAS6 and which is thus regulating many physiological processes including cell survival, cell proliferation, migration and differentiation. Ligand binding at the cell surface induces dimerization and autophosphorylation of AXL. Following activation by ligand, ALX binds and induces tyrosine phosphorylation of PI3-kinase subunits PIK3R1, PIK3R2 and PIK3R3; but also GRB2, PLCG1, LCK and PTPN11. Other downstream substrate candidates for AXL are CBL, NCK2, SOCS1 and TENC1. Recruitment of GRB2 and phosphatidylinositol 3 kinase regulatory subunits by AXL leads to the downstream activation of the AKT kinase. GAS6/AXL signaling plays a role in various processes such as endothelial cell survival during acidification by preventing apoptosis, optimal cytokine signaling during human natural killer cell development, hepatic regeneration, gonadotropin-releasing hormone neuron survival and migration, platelet activation, or regulation of thrombotic responses. Plays also an important role in inhibition of Toll-like receptors (TLRs)-mediated innate immune response. In case of filovirus infection, seems to function as a cell entry factor.

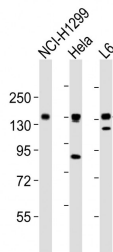
Overview

Product Name	Anti-AXL Antibody (C-term)
Reactive Species	Human, Rat
Description	Boster Bio Anti-AXL Antibody (C-term) (Catalog # M00226). Tested in WB application(s). This antibody reacts with Human, Rat.
Application	WB
Clonality	Polyclonal
Formulation	Purified polyclonal antibody supplied in PBS with 0.09% (W/V) sodium azide.
Storage Instructions	Maintain refrigerated at 2-8°C for up to 2 weeks. For long-term storage, store at -20°C in small aliquots to prevent freeze-thaw cycles.
Host	Rabbit
Uniprot ID	P30530

Technical Details

Immunogen	This AXL antibody is generated from a rabbit immunized with a KLH conjugated synthetic peptide between 838-872 amino acids from the C-terminal region of human AXL.
Predicted Reactive Species	Bovine, Mouse
Isotype	Rabbit IgG
Purification	This antibody is purified through a protein A column, followed by peptide affinity purification.
Suggested Dilutions	WB: 1:2000

Anti-AXL Antibody (C-term) (M00226) Images



All lanes : Anti-AXL Antibody (C-term) at 1:2000 dilution
Lane 1: NCI-H1299 whole cell lysates
Lane 2: HeLa whole cell lysates
Lane 3: L6 whole cell lysates
Lysates/proteins at 20 μ g per lane. Secondary Goat Anti-Rabbit IgG, (H+L), Peroxidase conjugated at 1/10000 dilution
Predicted band size : 98 kDa
Blocking/Dilution buffer: 5% NFDN/TBST.

Submit a product review to Biocompare.com

Submit a review of this product to Biocompare.com to receive a \$20 Amazon.com giftcard! Your reviews help your fellow scientists make the right decisions. Thank you for your contribution.



Anti-AXL Antibody (C-term)

For Research Use Only. Not for use in diagnostic procedures.