

## Anti-GAPDH Rabbit Monoclonal Antibody

Catalog Number: M00227-9

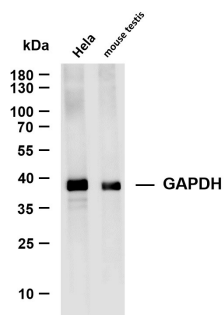
### Overview

Product Name	Anti-GAPDH Rabbit Monoclonal Antibody
Reactive Species	Dog, Human, Monkey, Mouse, Rabbit, Rat
Description	This Recombinant Rabbit Monoclonal Antibody detects endogenous levels of GAPDH protein. Validated for research with WB,ELISA applications. Anti GAPDH is reactive for Human, Mouse, Rat, Rabbit, Dog, Monkey samples
Application	ELISA, WB
Clonality	Monoclonal
Formulation	PBS, 50% glycerol, 0.05% Proclin 300, 0.05% stabilizing protein This antibody is supplied in a stabilized formulation. Compatibility with conjugation reactions depends on the chemistry of the conjugation method used. For conjugation methods that are not compatible with the stabilizing components present in this formulation, a carrier-free antibody format is required.
Storage Instructions	Store at -20°C/1 year
Host	Rabbit
Uniprot ID	P04406

### Technical Details

Isotype	IgG, Kappa
Purification	Protein A
Suggested Dilutions	WB 1:1000-1:5000 ELISA 1:5000-1:20000

## Anti-GAPDH Rabbit Monoclonal Antibody (M00227-9) Images



Various whole cell lysates were separated by 4-20% SDS-PAGE, and the membrane was blotted with anti-GAPDH antibody. The HRP-conjugated Goat anti-Rabbit IgG(H + L) antibody was used to detect the antibody. Lane 1: GAPDH Lane 2: mouse testis Predicted band size: 37kDa Observed band size: 37kDa

### Submit a product review to Biocompare.com

Submit a review of this product to Biocompare.com to receive a \$20 Amazon.com giftcard! Your reviews help your fellow scientists make the right decisions. Thank you for your contribution.



Anti-GAPDH Rabbit Monoclonal Antibody

For Research Use Only. Not for use in diagnostic procedures.