

Anti-FGFR2 Mouse Monoclonal Antibody [Clone ID: OTI3F8]

Catalog Number: M00231-1

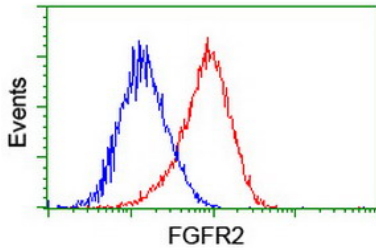
Overview

Product Name	Anti-FGFR2 Mouse Monoclonal Antibody [Clone ID: OTI3F8]
Reactive Species	Human, Mouse, Rat
Description	Boster Bio FGFR2 mouse monoclonal antibody, clone OTI3F8 (formerly 3F8). Catalog# M00231-1. Tested in IF, IHC, WB. This antibody reacts with Human, Mouse, Rat.
Conjugate	Unconjugated
Application	IF, IHC, WB
Clonality	Monoclonal OTI3F8
Formulation	PBS (pH 7.3) containing 1% stabilizing protein, 50% glycerol and 0.02% sodium azide. This antibody is supplied in a stabilized formulation. Compatibility with conjugation reactions depends on the chemistry of the conjugation method used. For conjugation methods that are not compatible with the stabilizing components present in this formulation, a carrier-free antibody format is required.
Storage Instructions	Store at -20°C for one year. For short term storage and frequent use, store at 4°C for up to one month. Avoid repeated freeze-thaw cycles.
Host	Mouse
Uniprot ID	P21802

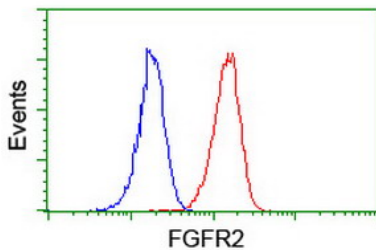
Technical Details

Immunogen	Full length human recombinant protein of human FGFR2 (NP_000132) produced in HEK293T cell.
Isotype	IgG2a
Concentration	1 mg/ml
Purification	Purified from mouse ascites fluids or tissue culture supernatant by affinity chromatography (protein A/G)
Suggested Dilutions	WB 1:500~2000 IHC 1:150 IF 1:100 Flow Cytometry 1:100

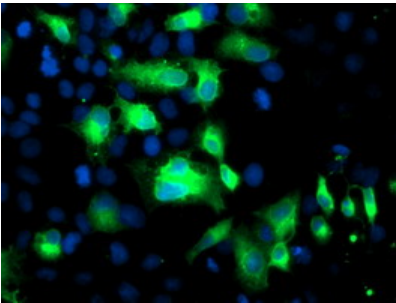
Anti-FGFR2 Mouse Monoclonal Antibody [Clone ID: OTI3F8] (M00231-1) Images



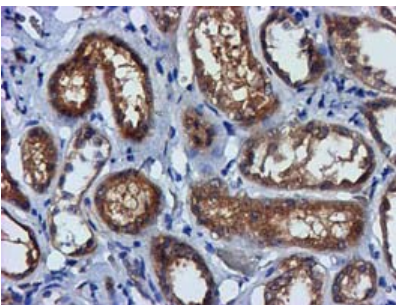
Flow cytometric Analysis of HeLa cells



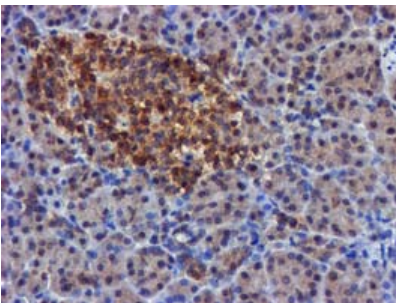
Flow cytometric Analysis of Jurkat cells



Anti-FGFR2 mouse monoclonal antibody (M00231-1) immunofluorescent staining of COS7 cells transiently transfected by pCMV6-ENTRY FGFR2.

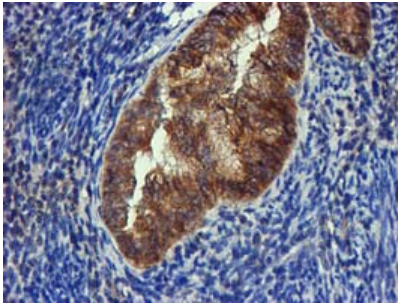


Immunohistochemical staining of paraffin-embedded Human Kidney tissue within the normal limits using anti-FGFR2 mouse monoclonal antibody. (Heat-induced epitope retrieval by 10mM citric buffer)

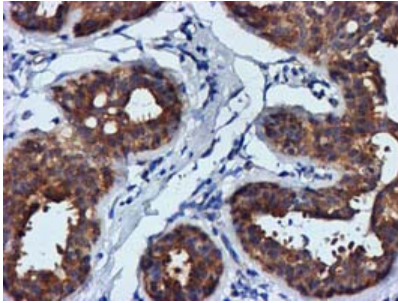


Immunohistochemical staining of paraffin-embedded Human pancreas tissue within the normal limits using anti-FGFR2 mouse monoclonal antibody. (Heat-induced epitope retrieval by 10mM citric buffer)

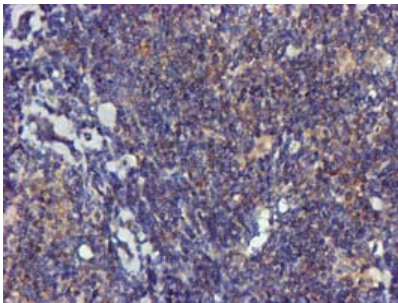
Immunohistochemical staining of paraffin-embedded



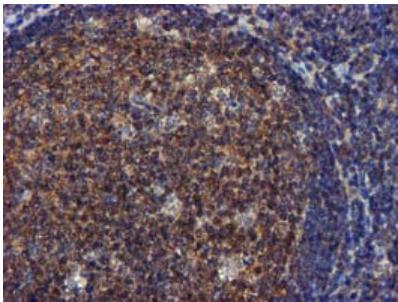
Adenocarcinoma of Human endometrium tissue using anti-FGFR2 mouse monoclonal antibody. (Heat-induced epitope retrieval by 10mM citric buffer)



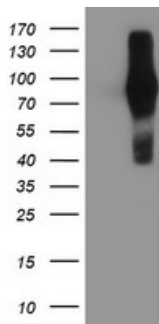
Immunohistochemical staining of paraffin-embedded Human breast tissue within the normal limits using anti-FGFR2 mouse monoclonal antibody. (Heat-induced epitope retrieval by 10mM citric buffer)



Immunohistochemical staining of paraffin-embedded Human lymphoma tissue using anti-FGFR2 mouse monoclonal antibody. (Heat-induced epitope retrieval by 10mM citric buffer)

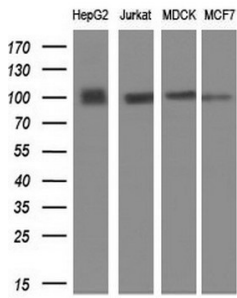


Immunohistochemical staining of paraffin-embedded Human tonsil within the normal limits using anti-FGFR2 mouse monoclonal antibody. (Heat-induced epitope retrieval by 10mM citric buffer)

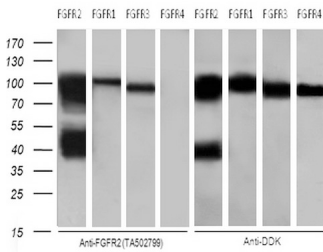


HEK293T cells were transfected with the pCMV6-ENTRY control (Left lane) or pCMV6-ENTRY FGFR2 (Right lane) cDNA for 48 hrs and lysed. Equivalent amounts of cell lysates (5 ug per lane) were separated by SDS-PAGE and immunoblotted with anti-FGFR2.

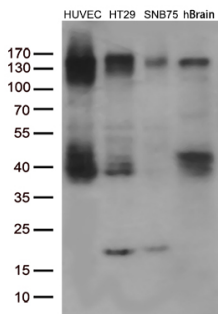
Western blot analysis of extracts (10ug) from 4 different cell lines by using anti-FGFR2 monoclonal antibody at 1:200



dilution.



Cross-Reactivity of anti-FGFR2 (M00231-1) with FGFR1 and FGFR3



Western blot analysis of extracts (35ug) from 3 different cell lines and human brain tissue by using anti-FGFR2 monoclonal antibody (1:250).

Submit a product review to Biocompare.com

Submit a review of this product to Biocompare.com to receive a \$20 Amazon.com giftcard! Your reviews help your fellow scientists make the right decisions. Thank you for your contribution.



Anti-FGFR2 Mouse Monoclonal Antibody [Clone ID: OTI3F8]

For Research Use Only. Not for use in diagnostic procedures.