

Anti-FGFR2 Mouse Monoclonal Antibody [Clone ID: OTI5C5]

Catalog Number: M00231-2

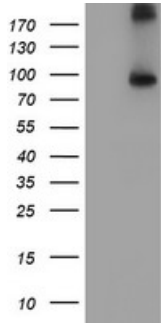
Overview

Product Name	Anti-FGFR2 Mouse Monoclonal Antibody [Clone ID: OTI5C5]
Reactive Species	Human, Mouse, Rat
Description	Boster Bio FGFR2 mouse monoclonal antibody, clone OTI5C5 (formerly 5C5). Catalog# M00231-2. Tested in FC, IF, IHC, WB. This antibody reacts with Human, Mouse, Rat.
Application	Flow Cytometry, IF, IHC, WB
Clonality	Monoclonal OTI5C5
Formulation	PBS (pH 7.3) containing 1% stabilizing protein, 50% glycerol and 0.02% sodium azide. This antibody is supplied in a stabilized formulation. Compatibility with conjugation reactions depends on the chemistry of the conjugation method used. For conjugation methods that are not compatible with the stabilizing components present in this formulation, a carrier-free antibody format is required.
Storage Instructions	Store at -20°C as received.
Host	Mouse
Uniprot ID	P21802

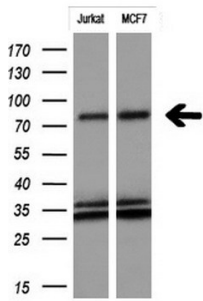
Technical Details

Immunogen	Full length human recombinant protein of human FGFR2 (NP_000132) produced in HEK293T cell.
Isotype	IgG2b
Concentration	0.85 mg/ml
Purification	Purified from mouse ascites fluids or tissue culture supernatant by affinity chromatography (protein A/G)
Suggested Dilutions	WB 1:200 - 1:1000 IHC 1:150 IF 1:100 Flow Cytometry 1:100

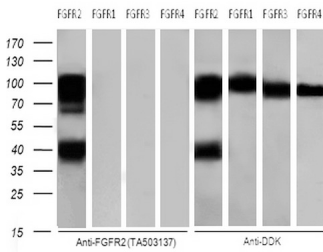
Anti-FGFR2 Mouse Monoclonal Antibody [Clone ID: OTI5C5] (M00231-2) Images



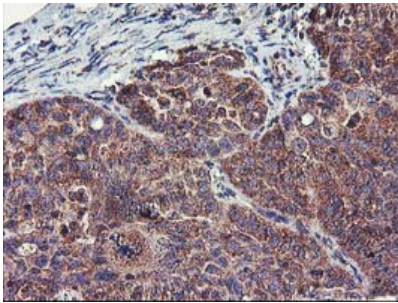
HEK293T cells were transfected with the pCMV6-ENTRY control (Left lane) or pCMV6-ENTRY FGFR2 (Right lane) cDNA for 48 hrs and lysed. Equivalent amounts of cell lysates (5 ug per lane) were separated by SDS-PAGE and immunoblotted with anti-FGFR2.



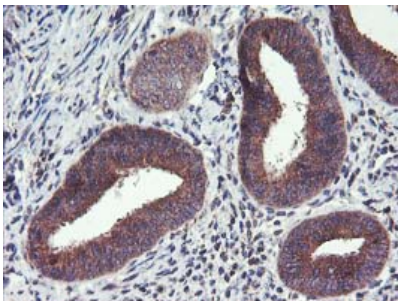
Western blot analysis of extracts (10ug) from 2 different cell lines by using anti-FGFR2 monoclonal antibody at 1:200.



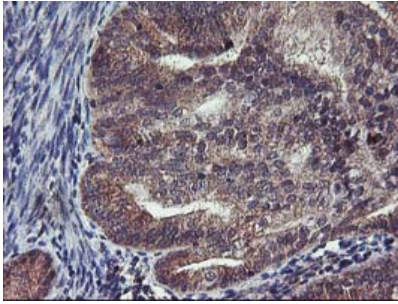
No Cross-Reactivity of anti-FGFR2 (M00231-2) with FGFR1



Immunohistochemical staining of paraffin-embedded Adenocarcinoma of Human ovary tissue using anti-FGFR2 mouse monoclonal antibody. (Heat-induced epitope retrieval by 10mM citric buffer)



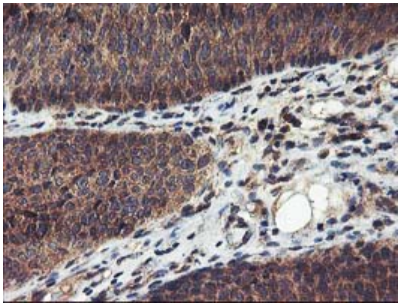
Immunohistochemical staining of paraffin-embedded Human endometrium tissue within the normal limits using anti-FGFR2 mouse monoclonal antibody. (Heat-induced epitope retrieval by 10mM citric buffer)



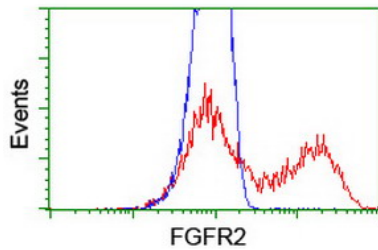
Immunohistochemical staining of paraffin-embedded Adenocarcinoma of Human endometrium tissue using anti-FGFR2 mouse monoclonal antibody. (Heat-induced epitope retrieval by 10mM citric buffer)



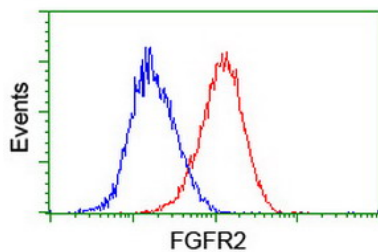
Immunohistochemical staining of paraffin-embedded Human breast tissue within the normal limits using anti-FGFR2 mouse monoclonal antibody. (Heat-induced epitope retrieval by 10mM citric buffer)



Immunohistochemical staining of paraffin-embedded Carcinoma of Human bladder tissue using anti-FGFR2 mouse monoclonal antibody. (Heat-induced epitope retrieval by 10mM citric buffer)

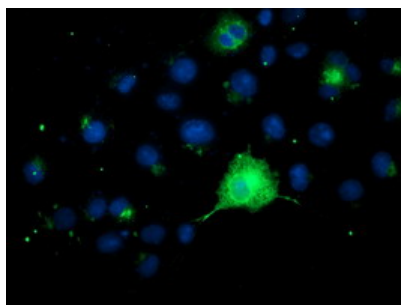


HEK293T cells transfected with either FGFR2 (Myc-DDK-tagged) overexpress plasmid (Red) or empty vector control plasmid (Blue) were immunostained by anti-FGFR2 antibody (M00231-2)



Flow cytometric Analysis of HeLa cells

Anti-FGFR2 mouse monoclonal antibody (M00231-2) immunofluorescent staining of COS7 cells transiently transfected by pCMV6-ENTRY FGFR2.



Submit a product review to Biocompare.com

Submit a review of this product to Biocompare.com to receive a \$20 Amazon.com giftcard! Your reviews help your fellow scientists make the right decisions. Thank you for your contribution.



Anti-FGFR2 Mouse Monoclonal Antibody [Clone ID: OTI5C5]

For Research Use Only. Not for use in diagnostic procedures.