

Anti-hMHCII/HLA DQ Antibody (Monoclonal, SPVL3)

Catalog Number: M00232

About HLA-DQA1

Recognizes a protein of 70kDa, which is identified as CD86 (HLDA V; WS Code BP BP072. HLDA V; WS Code A A109. HLDA VI; WS Code BP 95. HLDA VI; WS Code B CD86.9). CD86 is a type I transmembrane glycoprotein and a member of the immunoglobulin superfamily of cell surface receptors. It is expressed at high levels on resting peripheral monocytes and dendritic cells and at very low density on resting B and T lymphocytes. CD86 expression is rapidly upregulated by B cell specific stimuli with peak expression at 18 to 42 hours after stimulation. CD86, along with CD80/B71, is an important accessory molecule in T cell co-stimulation via its interaction with CD28 and CD152/CTLA4. Since CD86 has rapid kinetics of induction, it is believed to be the major CD28 ligand expressed early in the immune response. It is also found on malignant Hodgkin and Reed Sternberg (HRS) cells in Hodgkin's disease.

Overview

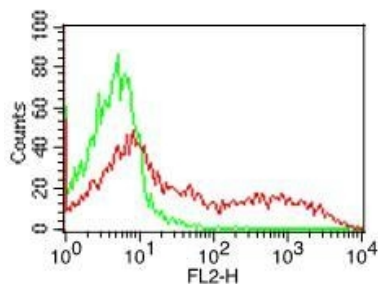
Product Name	Anti-hMHCII/HLA DQ Antibody (Monoclonal, SPVL3)
Reactive Species	Human
Description	Boster Bio Anti-hMHCII/HLA DQ Antibody (Monoclonal, SPVL3) (Catalog# M00232). Tested in FACS application(s). This antibody reacts with Human.
Conjugate	Biotin
Application	FACS
Clonality	Monoclonal SPVL3
Formulation	100 µg in 200 µl PBS containing 0.05% stabilizing protein and 0.05% sodium azide This antibody is supplied in a stabilized formulation. Compatibility with conjugation reactions depends on the chemistry of the conjugation method used. For conjugation methods that are not compatible with the stabilizing components present in this formulation, a carrier-free antibody format is required.
Storage Instructions	Store the antibody at 4°C, stable for 6 months. For long-term storage, store at -20°C. Avoid repeated freeze and thaw cycles.
Host	Mouse
Uniprot ID	P01909

Technical Details

Immunogen	Cells of T4 and CTL clone HG-38
Predicted Reactive Species	Bovine, Canine, Mouse, Orangutan, Pig, Rabbit, Rat, Deer
Isotype	IgG2a Kappa

Form	Liquid
Concentration	0.5-1mg/ml, actual concentration vary by lot. Use suggested dilution ratio to decide dilution procedure.
Purification	Protein G Chromatography
Suggested Dilutions	FACS: 0.5-1 $\mu\text{g}/10^6$ cells

Anti-hMHCII/HLA DQ Antibody (Monoclonal, SPVL3) (M00232) Images



Cell Surface flow analysis of MHCII-DLADQ in PBMC (Lymphocyte gated) using 0.5 μ g/ml

Submit a product review to Biocompare.com

Submit a review of this product to Biocompare.com to receive a \$20 Amazon.com giftcard! Your reviews help your fellow scientists make the right decisions. Thank you for your contribution.



Anti-hMHCII/HLA DQ Antibody (Monoclonal, SPVL3)

For Research Use Only. Not for use in diagnostic procedures.