

Anti-DDX58 Mouse Monoclonal Antibody [Clone ID: OTI6C1]

Catalog Number: M00244-1

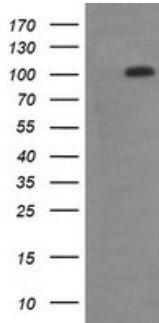
Overview

Product Name	Anti-DDX58 Mouse Monoclonal Antibody [Clone ID: OTI6C1]
Reactive Species	Human
Description	Boster Bio DDX58 mouse monoclonal antibody, clone OTI6C1 (formerly 6C1). Catalog# M00244-1. Tested in IF, IHC, WB. This antibody reacts with Human.
Application	IF, IHC, WB
Clonality	Monoclonal OTI6C1
Formulation	PBS (pH 7.3) containing 1% stabilizing protein, 50% glycerol and 0.02% sodium azide. This antibody is supplied in a stabilized formulation. Compatibility with conjugation reactions depends on the chemistry of the conjugation method used. For conjugation methods that are not compatible with the stabilizing components present in this formulation, a carrier-free antibody format is required.
Storage Instructions	Store at -20°C as received.
Host	Mouse
Uniprot ID	O95786

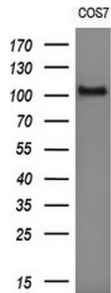
Technical Details

Immunogen	Full length human recombinant protein of human DDX58 (NP_055129) produced in HEK293T cell.
Isotype	IgG2a
Concentration	1 mg/ml
Purification	Purified from mouse ascites fluids or tissue culture supernatant by affinity chromatography (protein A/G)
Suggested Dilutions	WB: 1:4000 IHC: 1:150 IF: 1:100

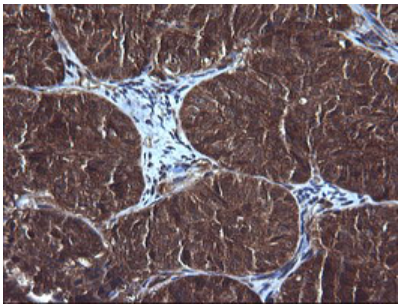
Anti-DDX58 Mouse Monoclonal Antibody [Clone ID: OTI6C1] (M00244-1) Images



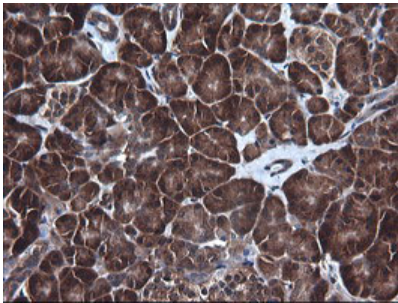
HEK293T cells were transfected with the pCMV6-ENTRY control (Left lane) or pCMV6-ENTRY DDX58 (Right lane) cDNA for 48 hrs and lysed. Equivalent amounts of cell lysates (5 ug per lane) were separated by SDS-PAGE and immunoblotted with anti-DDX58.



Western blot analysis of extracts (10ug) from 1 cell line by using anti-DDX58 monoclonal antibody (1:200).

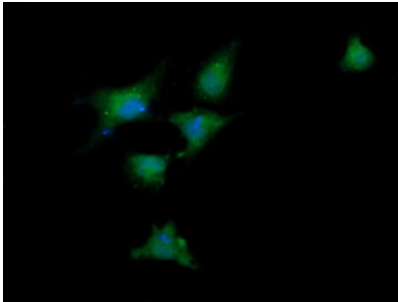
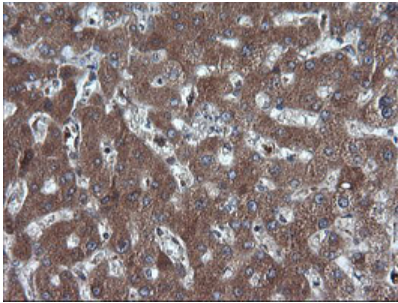
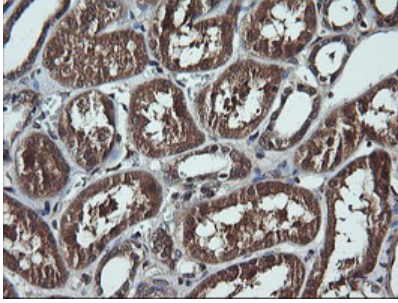
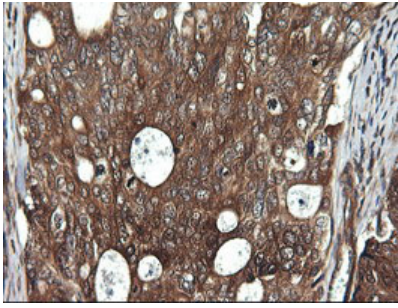


Immunohistochemical staining of paraffin-embedded Adenocarcinoma of Human ovary tissue using anti-DDX58 mouse monoclonal antibody. (Heat-induced epitope retrieval by 10mM citric buffer)



Immunohistochemical staining of paraffin-embedded Human pancreas tissue within the normal limits using anti-DDX58 mouse monoclonal antibody. (Heat-induced epitope retrieval by 10mM citric buffer)

Immunohistochemical staining of paraffin-embedded Adenocarcinoma of Human breast tissue using anti-DDX58 mouse monoclonal antibody. (Heat-induced epitope retrieval by 10mM citric buffer)



Immunohistochemical staining of paraffin-embedded Human Kidney tissue within the normal limits using anti-DDX58 mouse monoclonal antibody. (Heat-induced epitope retrieval by 10mM citric buffer)

Immunohistochemical staining of paraffin-embedded Human liver tissue within the normal limits using anti-DDX58 mouse monoclonal antibody. (Heat-induced epitope retrieval by 10mM citric buffer)

Anti-DDX58 mouse monoclonal antibody (M00244-1) immunofluorescent staining of COS7 cells transiently transfected by pCMV6-ENTRY DDX58.

Submit a product review to [Biocompare.com](https://www.biocompare.com)

Submit a review of this product to [Biocompare.com](https://www.biocompare.com) to receive a \$20 Amazon.com giftcard! Your reviews help your fellow scientists make the right decisions. Thank you for your contribution.



Anti-DDX58 Mouse Monoclonal Antibody [Clone ID: OTI6C1]

For Research Use Only. Not for use in diagnostic procedures.