

Anti-CD147 (BSG) Mouse Monoclonal Antibody [Clone ID: OTI9H5]

Catalog Number: M00248-2

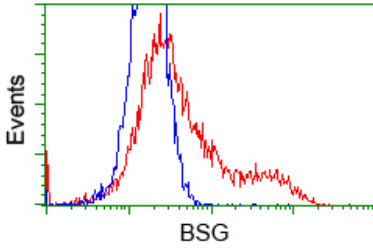
Overview

Product Name	Anti-CD147 (BSG) Mouse Monoclonal Antibody [Clone ID: OTI9H5]
Reactive Species	Dog, Human, Monkey, Rat
Description	Boster Bio Anti-BSG (CD147) mouse monoclonal antibody, clone OTI9H5 (formerly 9H5). Catalog# M00248-2. Tested in FC, IF, IHC, WB. This antibody reacts with Human, Monkey, Rat, Dog.
Conjugate	Unconjugated
Application	Flow Cytometry, IF, IHC, WB
Clonality	Monoclonal OTI9H5
Formulation	PBS (pH 7.3) containing 1% stabilizing protein, 50% glycerol and 0.02% sodium azide. This antibody is supplied in a stabilized formulation. Compatibility with conjugation reactions depends on the chemistry of the conjugation method used. For conjugation methods that are not compatible with the stabilizing components present in this formulation, a carrier-free antibody format is required.
Storage Instructions	Store at -20°C for one year. For short term storage and frequent use, store at 4°C for up to one month. Avoid repeated freeze-thaw cycles.
Host	Mouse
Uniprot ID	P35613

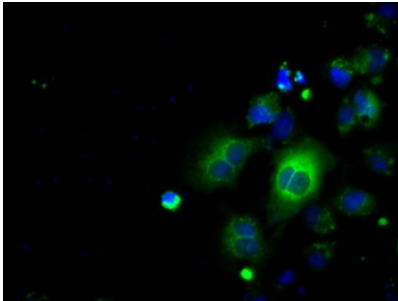
Technical Details

Immunogen	Full length human recombinant protein of human BSG (NP_001719) produced in HEK293T cell.
Isotype	IgG2b
Concentration	0.64 mg/ml
Purification	Purified from mouse ascites fluids or tissue culture supernatant by affinity chromatography (protein A/G)
Suggested Dilutions	WB 1:1500~3000 IHC 1:50 IF 1:100 Flow Cytometry 1:100

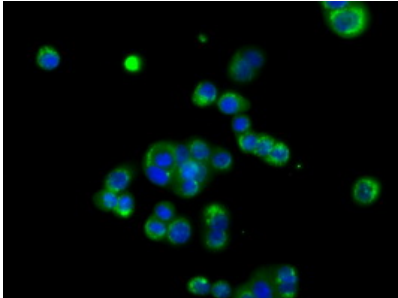
Anti-CD147 (BSG) Mouse Monoclonal Antibody [Clone ID: OTI9H5] (M00248-2) Images



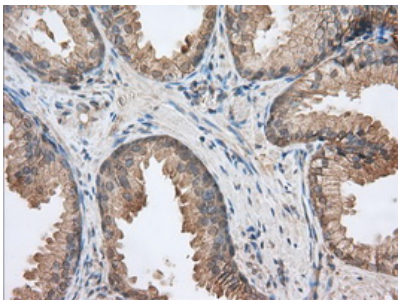
HEK293T cells transfected with either BSG (Myc-DDK-tagged) overexpress plasmid (Red) or empty vector control plasmid (Blue) were immunostained by anti-BSG antibody (M00248-2)



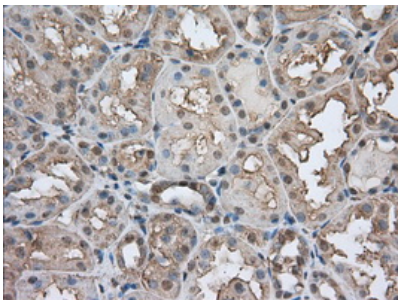
Anti-BSG mouse monoclonal antibody (M00248-2) immunofluorescent staining of COS7 cells transiently transfected by pCMV6-ENTRY BSG.



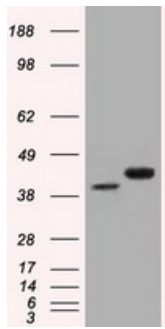
Immunofluorescent staining of HT29 cells using anti-BSG mouse monoclonal antibody (M00248-2).



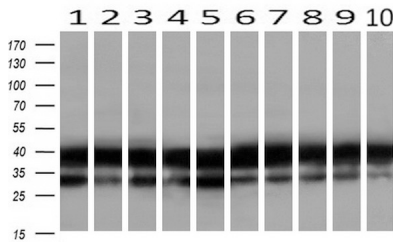
Immunohistochemical staining of paraffin-embedded Human prostate tissue within the normal limits using anti-BSG mouse monoclonal antibody. (Heat-induced epitope retrieval by 10mM citric buffer)



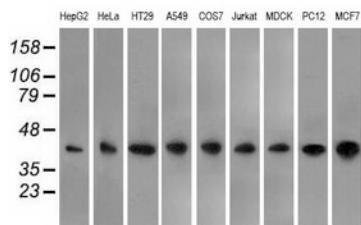
Immunohistochemical staining of paraffin-embedded Human Kidney tissue within the normal limits using anti-BSG mouse monoclonal antibody. (Heat-induced epitope retrieval by 10mM citric buffer)



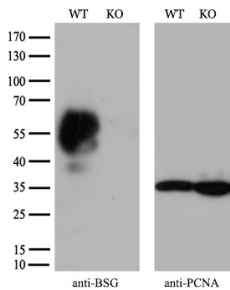
HEK293T cells were transfected with the pCMV6-ENTRY control (Left lane) or pCMV6-ENTRY BSG (Right lane) cDNA for 48 hrs and lysed. Equivalent amounts of cell lysates (5 ug per lane) were separated by SDS-PAGE and immunoblotted with anti-BSG.



Western blot analysis of extracts (10ug) from 10 Human tissue by using anti-BSG monoclonal antibody at 1:500 (1: Testis; 2: Omentum; 3: Uterus; 4: Breast; 5: Brain; 6: Liver; 7: Ovary; 8: Thyroid gland; 9: colon; 10: spleen).



Western blot analysis of extracts (35ug) from 9 different cell lines by using anti-BSG monoclonal antibody.



Equivalent amounts of cell lysates (10 ug per lane) of wild-type 293T cells (WT) and BSG-Knockout 293T cells (KO) were separated by SDS-PAGE and immunoblotted with anti-BSG monoclonal antibody M00248-2 (1:2000). Then the blotted membrane was stripped and reprobred with anti-PCNA antibody as a loading control.

Submit a product review to [Biocompare.com](https://www.biocompare.com)

Submit a review of this product to [Biocompare.com](https://www.biocompare.com) to receive a \$20 Amazon.com giftcard! Your reviews help your fellow scientists make the right decisions. Thank you for your contribution.



Anti-CD147 (BSG) Mouse Monoclonal Antibody [Clone ID: OTI9H5]

For Research Use Only. Not for use in diagnostic procedures.