

Anti-Ki67 MKI67 Rabbit Monoclonal Antibody

Catalog Number: M00254

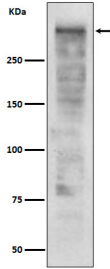
Overview

Product Name	Anti-Ki67 MKI67 Rabbit Monoclonal Antibody
Reactive Species	Human
Description	Boster Bio Anti-Ki67 MKI67 Rabbit Monoclonal Antibody catalog # M00254. Tested in WB, IHC, ICC/IF, Flow Cytometry applications. This antibody reacts with Human.
Application	Flow Cytometry, IF, IHC, ICC, WB
Clonality	Monoclonal EAH-13
Formulation	Rabbit IgG in stabilizing components, phosphate buffered saline, pH 7.4, 150mM NaCl, 0.02% sodium azide and 50% glycerol. *This antibody is supplied in a stabilized formulation. Compatibility with conjugation reactions depends on the chemistry of the conjugation method used. For conjugation methods that are not compatible with the stabilizing components present in this formulation, a carrier-free antibody format is required.
Storage Instructions	Store at -20°C for one year. For short term storage and frequent use, store at 4°C for up to one month. Avoid repeated freeze-thaw cycles.
Host	Rabbit
Uniprot ID	P46013

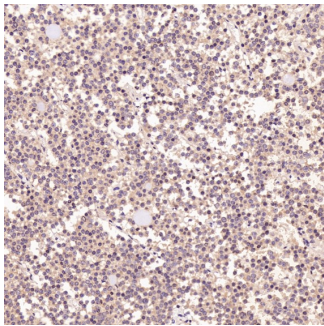
Technical Details

Immunogen	A synthesized peptide derived from human Ki67
Isotype	Rabbit IgG
Form	Liquid
Concentration	0.5mg/ml
Purification	Affinity-chromatography
Suggested Dilutions	WB 1:500-1:2000 IHC 1:50-1:200 ICC/IF 1:50-1:200 FC 1:50

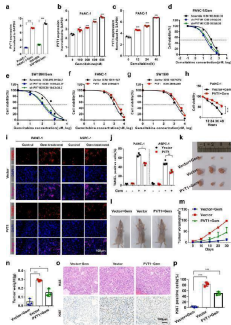
Anti-Ki67 MKI67 Rabbit Monoclonal Antibody (M00254) Images



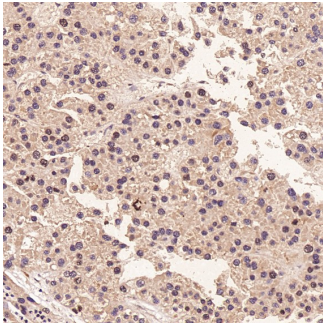
Western blot analysis of Ki67 expression in Ramos cell lysate.



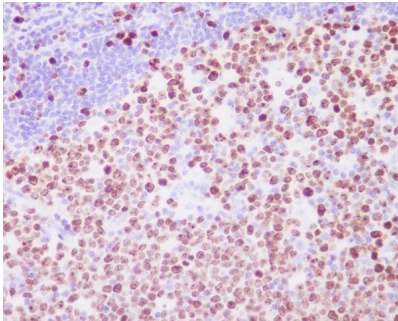
Immunohistochemical analysis of paraffin-embedded Human pituitary tumor, using the Antibody at 1:3000 dilution.



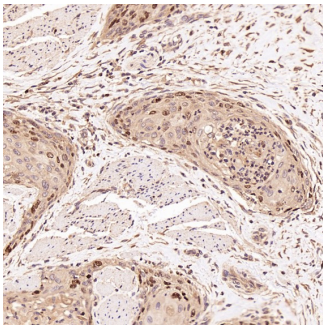
PVT1 promotes pancreatic cancer cell resistance to gemcitabine in vitro and in vivo . a After nocodazole treatment for 12 h, the expression level of PVT1 in PANC-1 and SW1990 human pancreatic cancer cell lines and the PANC-1/Gem and SW1990/Gem gemcitabine resistant cell lines was examined by real-time qPCR. b and c PANC-1 cells were treated with gemcitabine at different concentrations and for different durations as indicated. Then, the expression levels of PVT1 were determined. d-g PANC-1/Gem and SW1990/Gem cells with stable PVT1 knockdown and PANC-1 and SW1990 cells with stable PVT1 expression were treated with gemcitabine at different concentrations for 48 h, and cell viability was then measured by MTT assay. h PANC-1 cells stably expressing PVT1 were treated with gemcitabine (1 μ M) for different durations as indicated, and cell viability was measured by MTT assay. i and j Apoptotic cells among PVT1 overexpressing PANC-1 and ASPC-1 cells treated with gemcitabine were analyzed by TUNEL assay, the number of TUNEL-positive cells was quantified. Scale bars: 100 μ m. k and l Representative photographs of tumor-bearing mice in different groups and tumors excised from the mice were shown. m Growth curve showing changes in tumor volume in mice from different groups; growth was assessed every 5 days beginning from the injection and during gemcitabine (50 mg/kg) treatment. n Weight of the tumors excised from mice in each group. o and p Representative H&E staining images and immunohistochemical images of Ki67 in excised tumor tissues. Scale bars: 100 μ m. Data were represented as mean \pm SD, * P



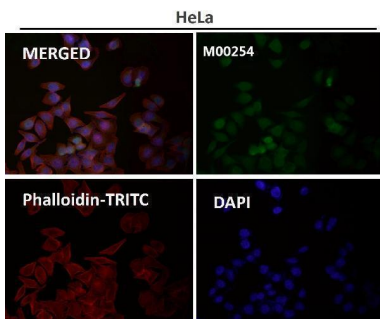
Immunohistochemical analysis of paraffin-embedded Human liver cancer, using the Antibody at 1:3000 dilution.



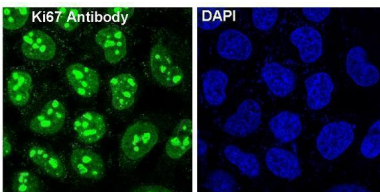
Immunohistochemical analysis of paraffin-embedded human tonsil, using Ki67 Antibody .



Immunohistochemical analysis of paraffin-embedded Human esophageal carcinoma, using the Antibody at 1:3000 dilution.



Immunofluorescent analysis using the Antibody at 1:500 dilution.



Immunofluorescent analysis of HeLa cells, using Ki67 Antibody.

23 Publications Citing This Product

1. PubMed ID: 32158357, Yang Z,Zhang J,Lu D,Sun Y, Zhao X,Wang X,Zhou W,He Q,Jiang Z.Hsa_circ_0137008 suppresses the malignant phenotype in colorectal cancer by acting as a microRNA-338-5p sponge. Cancer Cell Int.2020 Mar 4;20:67. doi:10.1186/s1293

5-020-1150-1.PMID:32158357;PMC

2. PubMed ID: 26938295, Tumor-suppressive function of long noncoding RNA MALAT1 in glioma cells by downregulation of MMP2 and inactivation of ERK/MAPK signaling

3. PubMed ID: 23554729, Soy isoflavone extracts stimulate the growth of nude mouse xenografts bearing estrogen-dependent human breast cancer cells (MCF-7)

Visit bosterbio.com/anti-ki67-rabbit-monoclonal-antibody-m00254-boster.html to see all 23 publications.

Submit a product review to Biocompare.com

Submit a review of this product to Biocompare.com to receive a \$20 Amazon.com giftcard! Your reviews help your fellow scientists make the right decisions. Thank you for your contribution.



Anti-Ki67 MKI67 Rabbit Monoclonal Antibody

For Research Use Only. Not for use in diagnostic procedures.