

Anti-Ki67/MKI67 Rabbit Monoclonal Antibody

Catalog Number: M00254-11

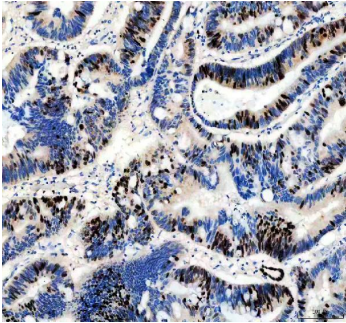
Overview

Product Name	Anti-Ki67/MKI67 Rabbit Monoclonal Antibody
Reactive Species	
Description	Boster Bio Anti-Ki67/MKI67 Rabbit Monoclonal Antibody catalog # M00254-11. Tested in IHC, IF, ICC/IF applications. This antibody reacts with Human, Mouse, Rat.
Application	IF, IHC, ICC
Clonality	Monoclonal
Formulation	Rabbit IgG in stabilizing components, phosphate buffered saline, pH 7.4, 150mM NaCl, 0.02% sodium azide and 50% glycerol. *This antibody is supplied in a stabilized formulation. Compatibility with conjugation reactions depends on the chemistry of the conjugation method used. For conjugation methods that are not compatible with the stabilizing components present in this formulation, a carrier-free antibody format is required.
Storage Instructions	Store at -20°C for one year. For short term storage and frequent use, store at 4°C for up to one month. Avoid repeated freeze-thaw cycles.
Host	Rabbit
Uniprot ID	P46013

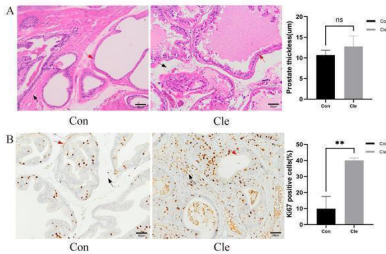
Technical Details

Immunogen	Recombinant protein with human Ki67 (Position: K2860-I3256).
Isotype	Rabbit IgG
Form	Liquid
Purification	Affinity-chromatography
Suggested Dilutions	IHC 1:50-1:200 IF 1:50-1:200 ICC/IF 1:50-1:200

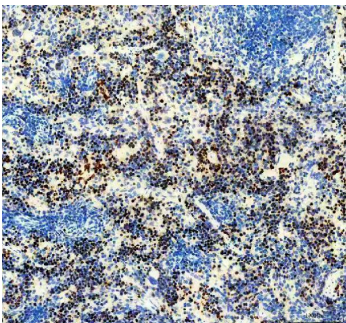
Anti-Ki67/MKI67 Rabbit Monoclonal Antibody (M00254-11) Images



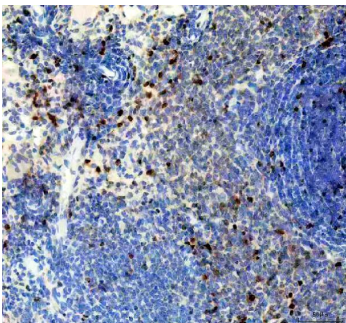
IHC analysis of Ki67/MKI67 using anti-Ki67/MKI67 antibody (M00254-11). Ki67/MKI67 was detected in a paraffin-embedded section of human colon cancer tissue. Heat mediated antigen retrieval was performed in EDTA buffer (pH 8.0, epitope retrieval solution). The tissue section was blocked with 10% goat serum. The tissue section was then incubated with 1:50 rabbit anti-Ki67/MKI67 Antibody (M00254-11) overnight at 4°C. Peroxidase Conjugated Goat Anti-rabbit IgG was used as secondary antibody and incubated for 30 minutes at 37°C. The tissue section was developed using HRP Conjugated Rabbit IgG Super Vision Assay Kit (Catalog # SV0002) with DAB as the chromogen.



Histological morphological features. (A) H&E staining for pathological changes of rats' prostate tissues (left panel), and the prostate thickness of rats (right panel). (B) The distribution and expression of Ki67 in rat prostate tissues (left panel), and the proportion of Ki67 positive cells positive (%) (right panel). Red arrow: prostatic epithelium; Blue arrow: prostatic stroma. Each bar in the graph represents the mean \pm S.D. Scale bar = 50 μ m, n = 3. * p

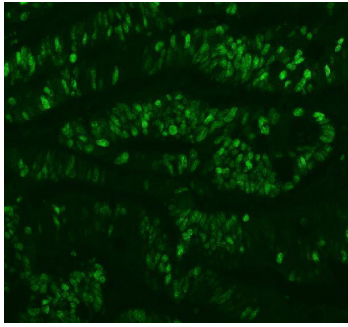


IHC analysis of Ki67/MKI67 using anti-Ki67/MKI67 antibody (M00254-11). Ki67/MKI67 was detected in a paraffin-embedded section of mouse spleen tissue. Heat mediated antigen retrieval was performed in EDTA buffer (pH 8.0, epitope retrieval solution). The tissue section was blocked with 10% goat serum. The tissue section was then incubated with 1:50 rabbit anti-Ki67/MKI67 Antibody (M00254-11) overnight at 4°C. Peroxidase Conjugated Goat Anti-rabbit IgG was used as secondary antibody and incubated for 30 minutes at 37°C. The tissue section was developed using HRP Conjugated Rabbit IgG Super Vision Assay Kit (Catalog # SV0002) with DAB as the chromogen.

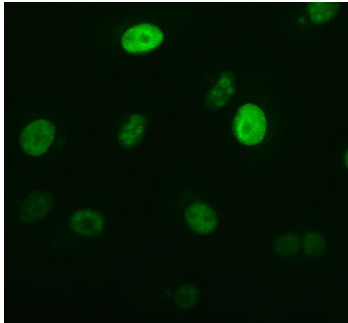


IHC analysis of Ki67/MKI67 using anti-Ki67/MKI67 antibody (M00254-11). Ki67/MKI67 was detected in a paraffin-embedded section of rat spleen tissue. Heat mediated antigen retrieval was performed in EDTA buffer (pH 8.0, epitope retrieval solution). The tissue section was blocked with 10% goat serum. The tissue section was then incubated with 1:50 rabbit anti-Ki67/MKI67 Antibody (M00254-11) overnight at 4°C. Peroxidase Conjugated Goat Anti-rabbit IgG was used as secondary antibody and incubated for 30 minutes at 37°C. The tissue section was developed using HRP Conjugated Rabbit IgG Super Vision Assay Kit (Catalog # SV0002) with DAB as the chromogen.

IF analysis of Ki67/MKI67 using anti-Ki67/MKI67 antibody (M00254-11). Ki67/MKI67 was detected in a paraffin-



embedded section of human intestine cancer tissue. Heat mediated antigen retrieval was performed in EDTA buffer (pH 8.0, epitope retrieval solution). The tissue section was blocked with 10% goat serum. The tissue section was then incubated at 1:50 rabbit anti-Ki67/MKI67 Antibody (M00254-11) overnight at 4°C. DyLight®488 Conjugated Goat Anti-Rabbit IgG (BA1127) was used as secondary antibody at 1:500 dilution and incubated for 30 minutes at 37°C. Visualize using a fluorescence microscope and filter sets appropriate for the label used.



IF analysis of Ki67/MKI67 using anti-Ki67/MKI67 antibody (M00254-11). Ki67/MKI67 was detected in an immunocytochemical section of A549 cells. Enzyme antigen retrieval was performed using IHC enzyme antigen retrieval reagent (AR0022) for 15 mins. The cells were blocked with 10% goat serum. And then incubated at 1:50 rabbit anti-Ki67/MKI67 Antibody (M00254-11) overnight at 4°C. DyLight488 Conjugated Goat Anti-Rabbit IgG (BA1127) was used as secondary antibody at 1:500 dilution and incubated for 30 minutes at 37°C. Visualize using a fluorescence microscope and filter sets appropriate for the label used.

Submit a product review to Biocompare.com

Submit a review of this product to Biocompare.com to receive a \$20 Amazon.com giftcard! Your reviews help your fellow scientists make the right decisions. Thank you for your contribution.



Anti-Ki67/MKI67 Rabbit Monoclonal Antibody

For Research Use Only. Not for use in diagnostic procedures.