

Anti-Human Ki-67 Monoclonal Antibody

Catalog Number: M00254-2

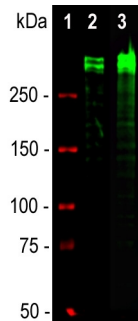
Overview

Product Name	Anti-Human Ki-67 Monoclonal Antibody
Reactive Species	Human
Description	Boster Bio Anti-Human Ki-67 Monoclonal Antibody catalog # M00254-2. Tested in IF, WB applications. This antibody reacts with Human.
Application	IF, WB
Clonality	Monoclonal
Formulation	Affinity purified antibody at 1mg/mL in 50% PBS, 50% glycerol, 5mM azide
Storage Instructions	Store at -20°C for one year. For short term storage and frequent use, store at 4°C for up to one month. Avoid repeated freeze-thaw cycles.
Host	Mouse
Uniprot ID	P46013

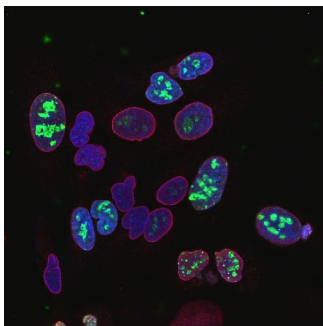
Technical Details

Immunogen	Recombinant construct containing the 2nd, 3rd and 4th Ki67 repeats of the human sequence (amino acids 1,111-1,490) expressed in and purified from E. coli.
Concentration	0.5-1mg/ml, actual concentration vary by lot. Use suggested dilution ratio to decide dilution procedure.
Suggested Dilutions	Dilute the sample so that the expected range of concentrations fall within the detection range of this kit. If the expected range of concentration is unknown, a pilot test should be conducted to decide the optimal dilution ratio for your samples. Some PubMed article(s) citing the expression level of this target are as follows: Boster Bio's internal QC testing used: WB: 1:1,000-5,000. IF 1:2,000-5,000

Anti-Human Ki-67 Monoclonal Antibody (M00254-2) Images



Western blot analysis of equal amounts of cell lysates using mouse mAb to Ki67, M00254-2, dilution 1:2,000, in green: [1] protein standard (red), [2] rapidly dividing HeLa cell cultures, [3] rapidly dividing HEK293 cell cultures. Strong double bands above 250kDa correspond to the two major Ki67 isoforms of apparent molecular weight of 345kDa and 395kDa. Smaller proteolytic fragments of these isoforms are also invariably detected on the blot.



High magnification confocal immunofluorescence image of M00254-2 stained HeLa cells grown in tissue culture, in green. The nuclei of rapidly dividing cells have clumps of Ki-67 associated with nucleoli, while nearby quiescent cells express little or no Ki-67. Cells are counterstained with other in red which reveals the nuclear lamina, and DAPI reveals nuclear DNA in blue.

11 Publications Citing This Product

1. PubMed ID: 32158357, Yang Z,Zhang J,Lu D,Sun Y, Zhao X,Wang X,Zhou W,He Q,Jiang Z.Hsa_circ_0137008 suppresses the malignant phenotype in colorectal cancer by acting as a microRNA-338-5p sponge. Cancer Cell Int.2020 Mar 4;20:67. doi:10.1186/s12935-020-1150-1.PMID:32158357;PMC
2. PubMed ID: 23554729, Soy isoflavone extracts stimulate the growth of nude mouse xenografts bearing estrogen-dependent human breast cancer cells (MCF-7)
3. PubMed ID: 28848999, Pan Z, Tian Y, Zhang B, Zhang X, Shi H, Liang Z, Wu P, Li R, You B, Yang L, Mao F, Qian H, Xu W. Int J Oncol. 2017 Oct;51(4):1055-1066. doi: 10.3892/ijo.2017.4101. Epub 2017 Aug 23. YAP signaling in gastric cancer-derived mesenchymal stem cells is...

Visit bosterbio.com/anti-human-ki-67-monoclonal-antibody-m00254-2-boster.html to see all 11 publications.

Submit a product review to Biocompare.com

Submit a review of this product to Biocompare.com to receive a \$20 Amazon.com giftcard! Your reviews help your fellow scientists make the right decisions. Thank you for your contribution.



Anti-Human Ki-67 Monoclonal Antibody