

Anti-BMAL1 Rabbit Monoclonal Antibody

Catalog Number: M00260-3

About ARNTL

C3 plays a central role in the activation of the complement system. Its processing by C3 convertase is the central reaction in both classical and alternative complement pathways. After activation C3b can bind covalently, via its reactive thioester, to cell surface carbohydrates or immune aggregates.

Overview

Product Name	Anti-BMAL1 Rabbit Monoclonal Antibody
Reactive Species	Human, Mouse, Rat
Description	Boster Bio Anti-BMAL1 Rabbit Monoclonal Antibody catalog # M00260-3. Tested in WB application. This antibody reacts with Human, Mouse, Rat.
Conjugate	FITC
Application	WB
Clonality	Monoclonal 17A76
Formulation	Rabbit IgG in phosphate buffered saline, pH 7.4, 150mM NaCl, 0.02% sodium azide and 50% glycerol, 0.4-0.5mg/ml BSA.
Storage Instructions	Store at -20°C for one year. For short term storage and frequent use, store at 4°C for up to one month. Avoid repeated freeze-thaw cycles.
Host	Rabbit
Uniprot ID	O00327

Technical Details

Immunogen	A synthesized peptide derived from human BMAL1
Predicted Reactive Species	Human, Primate
Cross Reactivity	Detects ~20kDa. Does not cross-react with alphaB-crystallin, betaL-crystallin, ̢H- crystallin, gamma-crystallin, HSP25, HSP27 or HSP47 proteins.
Isotype	IgG
Form	Liquid
Concentration	Actual concentration vary by lot. Use suggested dilution ratio to decide dilution procedure.
Purification	Affinity-chromatography

Suggested Dilutions

Dilute the sample so that the expected range of concentrations fall within the detection range of this kit.

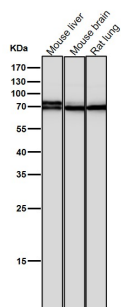
If the expected range of concentration is unknown, a pilot test should be conducted to decide the optimal dilution ratio for your samples.

Some PubMed article(s) citing the expression level of this target are as follows:

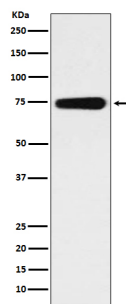
Boster Bio's internal QC testing used:

WB 1:500-1:2000

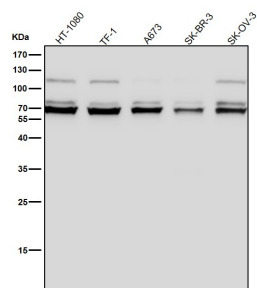
Anti-BMAL1 Rabbit Monoclonal Antibody (M00260-3) Images



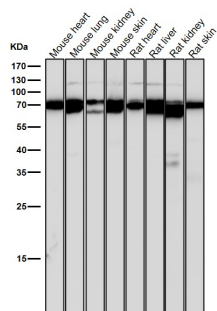
All lanes use the Antibody at 1:2W dilution for 1 hour at room temperature.



Western blot analysis of BMAL1 expression in human fetal heart lysate.



All lanes use the Antibody at 1:2W dilution for 1 hour at room temperature.



All lanes use the Antibody at 1:2W dilution for 1 hour at room temperature.

Submit a product review to Biocompare.com

Submit a review of this product to Biocompare.com to receive a \$20 Amazon.com giftcard! Your reviews help your fellow scientists make the right decisions. Thank you for your contribution.



Anti-BMAL1 Rabbit Monoclonal Antibody