

Anti-MITF Antibody (Monoclonal, ABM1H91)

Catalog Number: M00269

About MITF

The transcription factor Forkhead-box A1 (FOXA1), also known as hepatocyte nuclear factor 3-alpha, is a member of the FOX class of transcription factors. HNF-1 (β), and HNF-6 compose, in part, a homeoprotein family designated the hepatocyte nuclear factor family. The various HNF-1 isoforms regulate transcription of genes in the liver as well as in other tissues such as kidney, small intestine and thymus. FOXA1 is expressed in normal breast ductal epithelium and other epithelium in different organs, such as lung, pancreas, bladder, prostate, and colon. Recently, FOXA1 has been shown to be a major determinant of estrogen-ER activity and endocrine response in breast cancer cells. FOXA1 expression correlates with estrogen receptor (ER)-positivity, especially in luminal subtype A breast cancers, which is associated with favorable prognosis. FOXA1 is useful in the sub-classification of breast carcinomas.

Overview

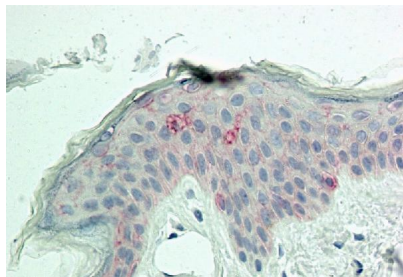
| | |
|----------------------|---|
| Product Name | Anti-MITF Antibody (Monoclonal, ABM1H91) |
| Reactive Species | Human, Mouse |
| Description | Boster Bio Anti-MITF Antibody (Monoclonal, ABM1H91) (Catalog# M00269). Tested in IHC, WB application(s). This antibody reacts with Mouse, Human. |
| Conjugate | Biotin |
| Application | IHC, WB |
| Clonality | Monoclonal ABM1H91 |
| Formulation | 100 μ g in 200 μ l PBS containing 0.05% stabilizing protein and 0.05% sodium azide This antibody is supplied in a stabilized formulation. Compatibility with conjugation reactions depends on the chemistry of the conjugation method used. For conjugation methods that are not compatible with the stabilizing components present in this formulation, a carrier-free antibody format is required. |
| Storage Instructions | Store the antibody at 4°C, stable for 6 months. For long-term storage, store at -20°C. Avoid repeated freeze and thaw cycles. |
| Host | Mouse |
| Uniprot ID | O75030 |

Technical Details

| | |
|----------------------------|---|
| Immunogen | A partial length recombinant MITF protein (amino acids 150-427) |
| Predicted Reactive Species | Bovine, Canine, Mouse, Orangutan, Pig, Rabbit, Rat, Deer |
| Isotype | IgG1 Kappa |

| | |
|---------------------|--|
| Form | Liquid |
| Concentration | 0.5-1mg/ml, actual concentration vary by lot. Use suggested dilution ratio to decide dilution procedure. |
| Purification | Protein G Chromatography |
| Suggested Dilutions | Western blot: 2-4 µg/ml, IHC: 10 µg/ml |

Anti-MITF Antibody (Monoclonal, ABM1H91) (M00269) Images



2 Immunohistochemical analysis of MITF in human Skin tissue using MITF antibody (Clone: ABM1H91) at 10 μ m



Western blot analysis of MITF. Anti-MITF antibody (Clone: ABM1H91) was tested at 4 μ m

Submit a product review to Biocompare.com

Submit a review of this product to Biocompare.com to receive a \$20 Amazon.com giftcard! Your reviews help your fellow scientists make the right decisions. Thank you for your contribution.



Anti-MITF Antibody (Monoclonal, ABM1H91)

For Research Use Only. Not for use in diagnostic procedures.