

Anti-PAX6 Monoclonal Antibody

Catalog Number: M00273

About PAX6

Paired box protein Pax-6 also known as aniridia type II protein (AN2) or oculorhombin is a transcription factor with key functions in the development of the eye, nose, central nervous system and pancreas. Pax6 further seems to be required for the differentiation of pancreatic islet alpha cells. PAX6 has been shown to bind to a promoter element in the glucagon, insulin and somatostatin promoters and regulates the specification of the ventral neuron subtypes by establishing the correct progenitor domains. Isoform 5a appears to function as a molecular switch that specifies target genes. Anti-PAX6 antibody is ideal for researchers interested in developmental biology, stem cell research, cell growth and cancer research.

Overview

Product Name	Anti-PAX6 Monoclonal Antibody
Reactive Species	Human
Description	Boster Bio Anti-PAX6 Monoclonal Antibody (Catalog # M00273). Tested in ELISA, IF applications. This antibody reacts with Human.
Application	ELISA, IF
Clonality	Monoclonal Clone: 7H10.D3.D4.G5 IgG1 kappa
Formulation	0.02 M Potassium Phosphate, 0.15 M Sodium Chloride, pH 7.2, 0.01% (w/v) Sodium Azide
Storage Instructions	Store vial at -20°C prior to opening. Aliquot contents and freeze at -20°C or below for extended storage. Avoid cycles of freezing and thawing. Centrifuge product if not completely clear after standing at room temperature. This product is stable for several weeks at 4°C as an undiluted liquid. Dilute only prior to immediate use. Expiration date is one (1) year from date of opening.
Host	Mouse
Uniprot ID	P26367

Technical Details

Immunogen	PAX6 protein A purified antibody was prepared in mice by repeated immunizations with a recombinant protein corresponding to human PAX6 protein.
Isotype	IgG1 kappa
Form	Liquid (sterile filtered)
Concentration	1 mg/mL by UV absorbance at 280 nm
Purification	Anti-PAX6 was purified from clarified ascites by Protein A chromatography. Cross-reactivity with PAX6 from other sources has not been determined.
Suggested Dilutions	Dilute the sample so that the expected range of concentrations fall within the detection range of this

kit.

If the expected range of concentration is unknown, a pilot test should be conducted to decide the optimal dilution ratio for your samples.

Some PubMed article(s) citing the expression level of this target are as follows:

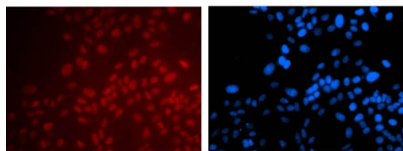
Boster Bio's internal QC testing used:

ELISA: 1:75,000 - 1:150,000

IF Microscopy: 1:100

WB: 1:500 - 1:2,000

Anti-PAX6 Monoclonal Antibody (M00273) Images



PAX6 was detected in Immunofluorescence of HeLa Cell, 20X using mouse anti-PAX6 Antigen Affinity purified monoclonal antibody (Catalog # M00273) at 1:100. Secondary antibody: goat anti-mouse secondary antibody at 1:1,000 for 45 min at RT. Localization: PAX6 is nuclear. Staining: Merged image of PAX6 as red fluorescent signal with DAPI (blue) nuclear counterstain. Images courtesy of Yang Xiang with Boston Children's Hospital.

Submit a product review to Biocompare.com

Submit a review of this product to Biocompare.com to receive a \$20 Amazon.com giftcard! Your reviews help your fellow scientists make the right decisions. Thank you for your contribution.



Anti-PAX6 Monoclonal Antibody