

## Anti-PAX6 (Stem Cell Marker) Monoclonal Antibody

Catalog Number: M00273-1

### About PAX6

Pax genes contain paired domains with strong homology to genes in *Drosophila*, which are involved in programming early development. Lesions in the Pax-6 gene account for most cases of aniridia, a congenital malformation of the eye, chiefly characterized by iris hypoplasia, which can cause blindness. Pax-6 is involved in other anterior segment malformations besides aniridia, such as Peters anomaly, a major error in the embryonic development of the eye with corneal clouding with variable iridolenticulocorneal adhesions. The Pax-6 gene encodes a transcriptional regulator that recognizes target genes through its paired-type DNA-binding domain. The paired domain is composed of two distinct DNA-binding subdomains, the amino-terminal subdomain and the carboxy-terminal subdomain, which bind respective consensus DNA sequences. The human Pax-6 gene produces two alternatively spliced isoforms that have the distinct structure of the paired domain.

### Overview

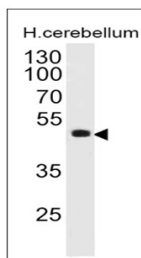
Product Name	Anti-PAX6 (Stem Cell Marker) Monoclonal Antibody
Reactive Species	Chicken, Human, Mouse, Rat
Description	Boster Bio Anti-PAX6 (Stem Cell Marker) Monoclonal Antibody (Catalog # M00273-1). Tested in Flow Cytometry, IF, WB applications. This antibody reacts with Human, Mouse, Rat, Chicken.
Conjugate	Biotin
Application	Flow Cytometry, IF, WB
Clonality	Monoclonal Clone: PAX6/498
Formulation	Prepared in 10mM PBS with 0.05% BSA & 0.05% azide. Also available WITHOUT BSA & azide at 1.0mg/ml.
Storage Instructions	Antibody with azide - store at 2 to 8 °C. Antibody without azide - store at -20 to -80 °C. Antibody is stable for 24 months. Non-hazardous. No MSDS required.
Host	Mouse
Uniprot ID	P26367 (Human); P63015 (Mouse); P63016 (Rat)

### Technical Details

Immunogen	Recombinant fragment (N-terminus; aa 1-300) of human PAX6 protein
Predicted Reactive Species	Bovine, Canine, Mouse, Orangutan, Pig, Rabbit, Rat, Deer
Isotype	IgG1, kappa
Form	Liquid
Concentration	Purified antibody with BSA and azide at 200ug/ml

Purification	200ug/ml of antibody purified from Bioreactor Concentrate by Protein A/G.
Suggested Dilutions	<p>Dilute the sample so that the expected range of concentrations fall within the detection range of this kit.</p> <p>If the expected range of concentration is unknown, a pilot test should be conducted to decide the optimal dilution ratio for your samples.</p> <p>Some PubMed article(s) citing the expression level of this target are as follows:</p> <p>Boster Bio's internal QC testing used:</p> <p>Flow Cytometry (0.5-1ug/million cells)</p> <p>Immunofluorescence (0.5-1ug/ml)</p> <p>Western Blot (1-2ug/ml)</p> <p>Optimal dilution for a specific application should be determined.</p>

## Anti-PAX6 (Stem Cell Marker) Monoclonal Antibody (M00273-1) Images



Western Blot of human Cerebellum Lysate using PAX6 Monoclonal Antibody (PAX6/498).

### Submit a product review to Biocompare.com

Submit a review of this product to Biocompare.com to receive a \$20 Amazon.com giftcard! Your reviews help your fellow scientists make the right decisions. Thank you for your contribution.



Anti-PAX6 (Stem Cell Marker) Monoclonal Antibody