

## Anti-(Mouse) Epcam Antibody (C-term)

Catalog Number: M00276-1

### About Epcam

May act as a physical homophilic interaction molecule between intestinal epithelial cells (IECs) and intraepithelial lymphocytes (IELs) at the mucosal epithelium for providing immunological barrier as a first line of defense against mucosal infection. Plays a role in embryonic stem cells proliferation and differentiation. Up-regulates the expression of FABP5, MYC and cyclins A and E (By similarity).

### Overview

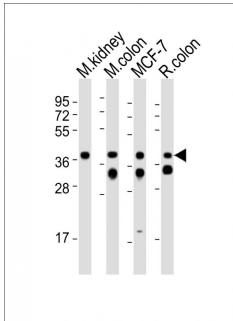
Product Name	Anti-(Mouse) Epcam Antibody (C-term)
Reactive Species	Human, Mouse, Rat
Description	Boster Bio Anti-(Mouse) Epcam Antibody (C-term) (Catalog # M00276-1). Tested in WB, IHC-P application(s). This antibody reacts with Human, Mouse, Rat.
Application	IHC-P, WB
Clonality	Polyclonal
Formulation	Purified polyclonal antibody supplied in PBS with 0.09% (W/V) sodium azide.
Storage Instructions	Maintain refrigerated at 2-8°C for up to 2 weeks. For long-term storage, store at -20°C in small aliquots to prevent freeze-thaw cycles.
Host	Rabbit
Uniprot ID	Q99JW5

### Technical Details

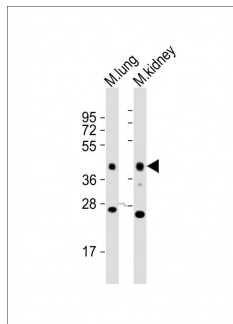
Immunogen	This Mouse Epcam antibody is generated from a rabbit immunized with a KLH conjugated synthetic peptide between 217-251 amino acids from the C-terminal region of Mouse Epcam.
Predicted Reactive Species	Bovine, Mouse
Isotype	Rabbit IgG
Purification	This antibody is purified through a protein A column, followed by peptide affinity purification.
Suggested Dilutions	Dilute the sample so that the expected range of concentrations fall within the detection range of this kit. If the expected range of concentration is unknown, a pilot test should be conducted to decide the optimal dilution ratio for your samples. Some PubMed article(s) citing the expression level of this target are as follows: Boster Bio's internal QC testing used: WB: 1:2000 IHC-P: 1:25



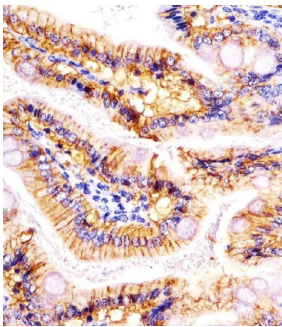
## Anti-(Mouse) Epcam Antibody (C-term) (M00276-1) Images



All lanes : Anti-Epcam Antibody (C-term) at 1:2000 dilution  
Lane 1: mouse kidney lysates  
Lane 2: mouse colon lysates  
Lane 3: MCF-7 whole cell lysates  
Lane 4: rat colon lysates  
Lysates/proteins at 20 µg per lane.  
Secondary  
Goat Anti-Rabbit IgG, (H+L), Peroxidase conjugated at 1/10000 dilution  
Predicted band size : 35 kDa  
Blocking/Dilution buffer: 5% NFDM/TBST.



All lanes : Anti-Epcam Antibody (C-term) at 1:2000 dilution  
Lane 1: mouse lung lysates  
Lane 2: mouse kidney lysates  
Lysates/proteins at 20 µg per lane.  
Secondary  
Goat Anti-Rabbit IgG, (H+L), Peroxidase conjugated at 1/10000 dilution  
Predicted band size : 35 kDa  
Blocking/Dilution buffer: 5% NFDM/TBST.



M00276-1 staining (Mouse) Epcam in mouse colon sections by Immunohistochemistry (IHC-P -paraformaldehyde-fixed, paraffin-embedded sections). Tissue was fixed with formaldehyde and blocked with 3% BSA for 0.5 hour at room temperature; antigen retrieval was by heat mediation with a citrate buffer (pH6). Samples were incubated with primary antibody (1/25) for 1 hours at 37°C. A undiluted biotinylated goat polyvalent antibody was used as the secondary antibody.

## Submit a product review to Biocompare.com

Submit a review of this product to Biocompare.com to receive a \$20 Amazon.com giftcard! Your reviews help your fellow scientists make the right decisions. Thank you for your contribution.



Anti-(Mouse) Epcam Antibody (C-term)