

## Anti-BMI1 Antibody (C-term)

Catalog Number: M00313-1

### About BMI1

Component of a Polycomb group (PcG) multiprotein PRC1- like complex, a complex class required to maintain the transcriptionally repressive state of many genes, including Hox genes, throughout development. PcG PRC1 complex acts via chromatin remodeling and modification of histones; it mediates monoubiquitination of histone H2A 'Lys-119', rendering chromatin heritably changed in its expressibility. In the PRC1 complex, it is required to stimulate the E3 ubiquitin-protein ligase activity of RNF2/RING2.

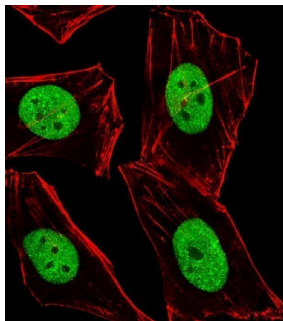
### Overview

Product Name	Anti-BMI1 Antibody (C-term)
Reactive Species	Human, Mouse
Description	Boster Bio Anti-BMI1 Antibody (C-term) (Catalog # M00313-1). Tested in WB, IF application(s). This antibody reacts with Human, Mouse.
Application	IF, WB
Clonality	Polyclonal
Formulation	Purified polyclonal antibody supplied in PBS with 0.09% (W/V) sodium azide.
Storage Instructions	Maintain refrigerated at 2-8°C for up to 2 weeks. For long-term storage, store at -20°C in small aliquots to prevent freeze-thaw cycles.
Host	Rabbit
Uniprot ID	P35226

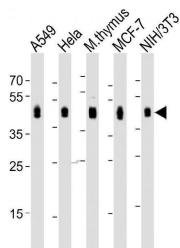
### Technical Details

Immunogen	This BMI1 antibody is generated from a rabbit immunized with a KLH conjugated synthetic peptide between 281-314 amino acids from the C-terminal region of human BMI1.
Predicted Reactive Species	Human, Mouse, Rat
Isotype	Rabbit IgG
Purification	This antibody is purified through a protein A column, followed by peptide affinity purification.
Suggested Dilutions	IF: 1:25 WB: 1:1000-1:2000

## Anti-BMI1 Antibody (C-term) (M00313-1) Images



Immunofluorescent analysis of 4% paraformaldehyde-fixed, 0.1% Triton X-100 permeabilized HeLa (Human cervical epithelial adenocarcinoma cell line) cells labeling BMI1 with M00313-1 at 1/25 dilution, followed by Alexa Fluor 488-conjugated goat anti-rabbit IgG secondary antibody at 1/400 dilution (green). Confocal image showing nuclear staining on HeLa cell line. Cytoplasmic actin is detected with Alexa Fluor® 555 conjugated with Phalloidin at 1/100 dilution (red).



All lanes : Anti-BMI1 Antibody (C-term) at 1:1000-1:2000 dilution  
Lane 1: A549 whole cell lysate  
Lane 2: HeLa whole cell lysate  
Lane 3: mouse thymus lysate  
Lane 4: MCF-7 whole cell lysate  
Lane 5: NIH/3T3 whole cell lysate  
Lysates/proteins at 20 µg per lane. Secondary Goat Anti-Rabbit IgG, (H+L), Peroxidase conjugated at 1/10000 dilution. Predicted band size : 37 kDa. Blocking/Dilution buffer: 5% NFDm/TBST.

## Submit a product review to Biocompare.com

Submit a review of this product to Biocompare.com to receive a \$20 Amazon.com giftcard! Your reviews help your fellow scientists make the right decisions. Thank you for your contribution.



Anti-BMI1 Antibody (C-term)

For Research Use Only. Not for use in diagnostic procedures.