

Anti-Lipoprotein lipase (LPL) Mouse Monoclonal Antibody [Clone ID: OTI3A10]

Catalog Number: M00316-2

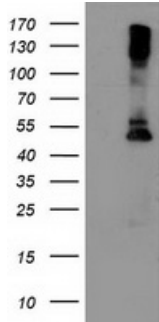
Overview

Product Name	Anti-Lipoprotein lipase (LPL) Mouse Monoclonal Antibody [Clone ID: OTI3A10]
Reactive Species	Human, Mouse, Rat
Description	Boster Bio LPL (Lipoprotein lipase) mouse monoclonal antibody, clone OTI3A10 (formerly 3A10). Catalog# M00316-2. Tested in FC, IHC, WB. This antibody reacts with Human, Mouse, Rat.
Application	Flow Cytometry, IHC, WB
Clonality	Monoclonal OTI3A10
Formulation	PBS (pH 7.3) containing 1% stabilizing protein, 50% glycerol and 0.02% sodium azide. This antibody is supplied in a stabilized formulation. Compatibility with conjugation reactions depends on the chemistry of the conjugation method used. For conjugation methods that are not compatible with the stabilizing components present in this formulation, a carrier-free antibody format is required.
Storage Instructions	Store at -20°C as received.
Host	Mouse
Uniprot ID	P06858

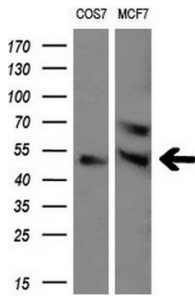
Technical Details

Immunogen	Human recombinant protein fragment corresponding to amino acids 28-475 of human LPL (NP_000228) produced in HEK293T.
Isotype	IgG1
Concentration	1 mg/ml
Purification	Purified from mouse ascites fluids or tissue culture supernatant by affinity chromatography (protein A/G)
Suggested Dilutions	WB 1:500 IHC 1:150 Flow Cytometry 1:100

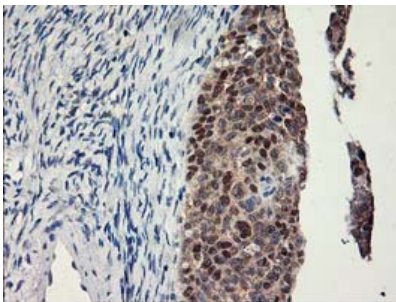
Anti-Lipoprotein lipase (LPL) Mouse Monoclonal Antibody [Clone ID: OTI3A10] (M00316-2) Images



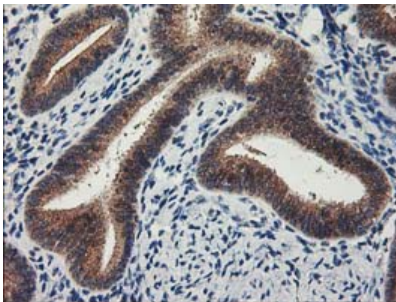
HEK293T cells were transfected with the pCMV6-ENTRY control (Left lane) or pCMV6-ENTRY LPL (Right lane) cDNA for 48 hrs and lysed. Equivalent amounts of cell lysates (5 ug per lane) were separated by SDS-PAGE and immunoblotted with anti-LPL.



Western blot analysis of extracts (10ug) from 2 different cell lines by using anti-LPL monoclonal antibody (1:200).

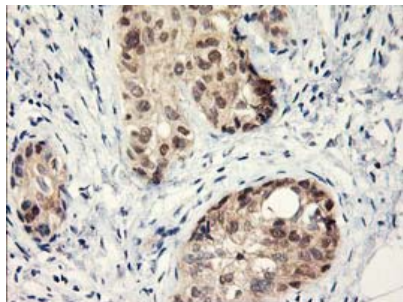
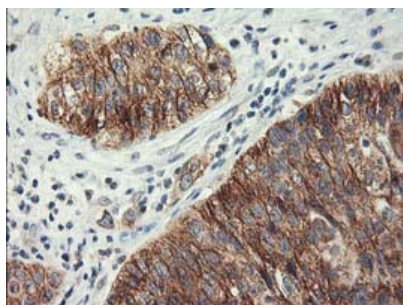


Immunohistochemical staining of paraffin-embedded Adenocarcinoma of Human ovary tissue using anti-LPL mouse monoclonal antibody. (Heat-induced epitope retrieval by 10mM citric buffer)

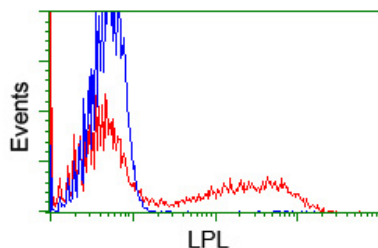


Immunohistochemical staining of paraffin-embedded Human endometrium tissue within the normal limits using anti-LPL mouse monoclonal antibody. (Heat-induced epitope retrieval by 10mM citric buffer)

Immunohistochemical staining of paraffin-embedded Carcinoma of Human bladder tissue using anti-LPL mouse monoclonal antibody. (Heat-induced epitope retrieval by 10mM citric buffer)



Immunohistochemical staining of paraffin-embedded Adenocarcinoma of Human breast tissue using anti-LPL mouse monoclonal antibody. (Heat-induced epitope retrieval by 10mM citric buffer)



HEK293T cells transfected with either LPL (Myc-DDK-tagged) overexpress plasmid (Red) or empty vector control plasmid (Blue) were immunostained by anti-LPL antibody (M00316-2)

Submit a product review to Biocompare.com

Submit a review of this product to Biocompare.com to receive a \$20 Amazon.com giftcard! Your reviews help your fellow scientists make the right decisions. Thank you for your contribution.



Anti-Lipoprotein lipase (LPL) Mouse Monoclonal Antibody [Clone ID: OT13A10]

For Research Use Only. Not for use in diagnostic procedures.