

Anti-Beclin 1 (BECN1) Mouse Monoclonal Antibody [Clone ID: OTI1F1]

Catalog Number: M00327-1

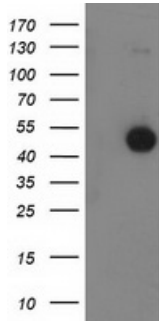
Overview

Product Name	Anti-Beclin 1 (BECN1) Mouse Monoclonal Antibody [Clone ID: OTI1F1]
Reactive Species	Dog, Human, Mouse, Rat
Description	Boster Bio BECN1 (Beclin 1) mouse monoclonal antibody, clone OTI1F1 (formerly 1F1). Catalog# M00327-1. Tested in FC, IF, IHC, WB. This antibody reacts with Human, Mouse, Rat, Dog.
Application	Flow Cytometry, IF, IHC, WB
Clonality	Monoclonal OTI1F1
Formulation	PBS (PH 7.3) containing 1% BSA, 50% glycerol and 0.02% sodium azide.
Storage Instructions	Store at -20°C as received.
Host	Mouse
Uniprot ID	Q14457

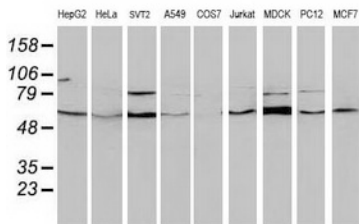
Technical Details

Immunogen	Full length human recombinant protein of human BECN1 (NP_003757) produced in HEK293T cell.
Isotype	IgG2a
Concentration	0.35 mg/ml
Purification	Purified from mouse ascites fluids or tissue culture supernatant by affinity chromatography (protein A/G)
Suggested Dilutions	Dilute the sample so that the expected range of concentrations fall within the detection range of this kit. If the expected range of concentration is unknown, a pilot test should be conducted to decide the optimal dilution ratio for your samples. Some PubMed article(s) citing the expression level of this target are as follows:

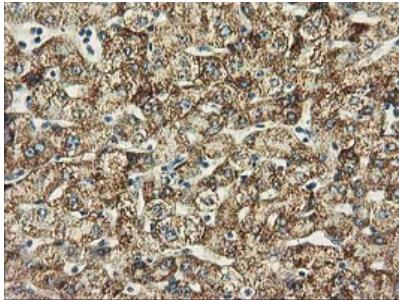
Anti-Becn1 (BECN1) Mouse Monoclonal Antibody [Clone ID: OTI1F1] (M00327-1) Images



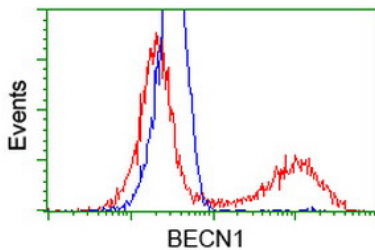
HEK293T cells were transfected with the pCMV6-ENTRY control (Left lane) or pCMV6-ENTRY BECN1 (Right lane) cDNA for 48 hrs and lysed. Equivalent amounts of cell lysates (5 ug per lane) were separated by SDS-PAGE and immunoblotted with anti-BECN1.



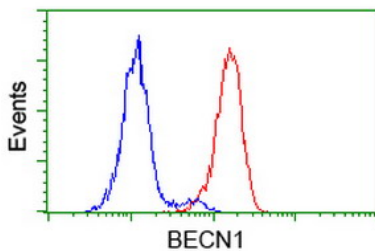
Western blot analysis of extracts (35ug) from 9 different cell lines by using anti-BECN1 monoclonal antibody.



Immunohistochemical staining of paraffin-embedded Human liver tissue within the normal limits using anti-BECN1 mouse monoclonal antibody. (Heat-induced epitope retrieval by 10mM citric buffer)

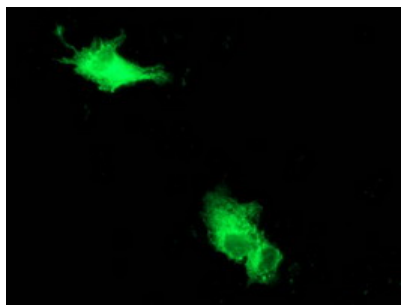
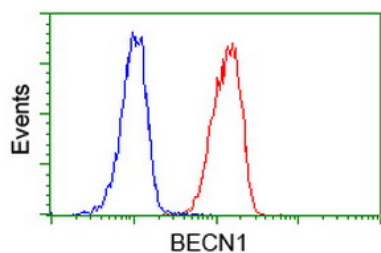


HEK293T cells transfected with either BECN1 (Myc-DDK-tagged) overexpress plasmid (Red) or empty vector control plasmid (Blue) were immunostained by anti-BECN1 antibody (M00327-1)



Flow cytometric Analysis of HeLa cells

Flow cytometric Analysis of Jurkat cells



Anti-BECN1 mouse monoclonal antibody (M00327-1)
immunofluorescent staining of COS7 cells transiently
transfected by pCMV6-ENTRY BECN1.

Submit a product review to Biocompare.com

Submit a review of this product to Biocompare.com to receive a \$20 Amazon.com giftcard! Your reviews help your fellow scientists make the right decisions. Thank you for your contribution.



Anti-Becclin 1 (BECN1) Mouse Monoclonal Antibody [Clone ID: OT11F1]