

Anti-CD4 Rabbit Monoclonal Antibody, Clone#RM345

Catalog Number: M00344-1

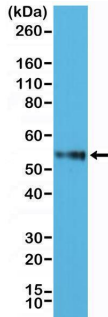
Overview

Product Name	Anti-CD4 Rabbit Monoclonal Antibody, Clone#RM345
Reactive Species	Human
Description	Boster Bio Anti-CD4 Rabbit Monoclonal Antibody, Clone#RM345 (Catalog # M00344-1). Tested in IHC, WB applications. This antibody reacts with Human.
Application	IHC, WB
Clonality	Monoclonal RM345
Formulation	50% Glycerol/PBS with 1% stabilizing protein and 0.09% sodium azide This antibody is supplied in a stabilized formulation. Compatibility with conjugation reactions depends on the chemistry of the conjugation method used. For conjugation methods that are not compatible with the stabilizing components present in this formulation, a carrier-free antibody format is required.
Storage Instructions	Store at -20°C for one year. Avoid repeated freeze-thaw cycles.
Host	Rabbit
Uniprot ID	P01730

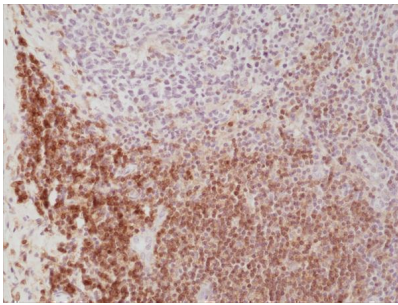
Technical Details

Immunogen	A peptide corresponding to the N-terminus of human CD4.
Cross Reactivity	This antibody reacts to the extracellular domain of human CD4.
Isotype	Rabbit IgG
Form	Liquid
Concentration	0.5-1mg/ml, actual concentration vary by lot. Use suggested dilution ratio to decide dilution procedure.
Purification	Protein A affinity purified from an animal origin-free culture supernatant
Suggested Dilutions	Immunohistochemistry (IHC): 1:200-1:500 dilution WB: 1:2000-1:5000 dilution.

Anti-CD4 Rabbit Monoclonal Antibody, Clone#RM345 (M00344-1) Images



Western Blotting result Western Blot of Jurkat cell lysate using anti-CD4 rabbit monoclonal antibody (Clone RM345) at a 1:2500 dilution.



IHC result Immunohistochemical staining of formalin fixed and paraffin embedded human Tonsil tissue section using anti-CD4 rabbit monoclonal antibody (Clone RM345) at a 1:500 dilution.

1 Publications Citing This Product

1. PubMed ID: 23308369, Ouyang W, An T, Guo D, Wu S, Tien P. Aids Res Hum Retroviruses. 2013 Mar;29(3):613-20. Doi: 10.1089/Aid.2012.0059. Epub 2013 Jan 11. The Potent Human Immunodeficiency Virus Type 1 (Hiv-1) Entry Inhibitor Hr212 Blocks Formation Of The Envelope Glyc...

Visit bosterbio.com/anti-cd4-rabbit-monoclonal-antibody-clone-rm345-m00344-1-boster.html to see all 1 publications.

Submit a product review to Biocompare.com

Submit a review of this product to Biocompare.com to receive a \$20 Amazon.com giftcard! Your reviews help your fellow scientists make the right decisions. Thank you for your contribution.



Anti-CD4 Rabbit Monoclonal Antibody, Clone#RM345

For Research Use Only. Not for use in diagnostic procedures.