

Anti-Leptin Receptor LEPR Rabbit Monoclonal Antibody

Catalog Number: M00350

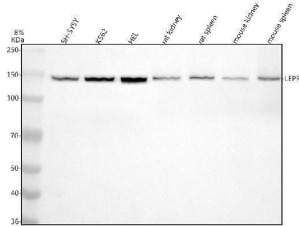
Overview

Product Name	Anti-Leptin Receptor LEPR Rabbit Monoclonal Antibody
Reactive Species	Human, Mouse, Rat
Description	Boster Bio Anti-Leptin Receptor LEPR Rabbit Monoclonal Antibody catalog # M00350. Tested in WB application. This antibody reacts with Human, Mouse, Rat.
Application	WB
Clonality	Monoclonal ABDO-12
Formulation	Rabbit IgG in stabilizing components, phosphate buffered saline, pH 7.4, 150mM NaCl, 0.02% sodium azide and 50% glycerol. *This antibody is supplied in a stabilized formulation. Compatibility with conjugation reactions depends on the chemistry of the conjugation method used. For conjugation methods that are not compatible with the stabilizing components present in this formulation, a carrier-free antibody format is required.
Storage Instructions	Store at -20°C for one year. For short term storage and frequent use, store at 4°C for up to one month. Avoid repeated freeze-thaw cycles.
Host	Rabbit
Uniprot ID	P48357

Technical Details

Immunogen	A synthesized peptide derived from human Leptin Receptor
Isotype	Rabbit IgG
Form	Liquid
Concentration	0.5mg/ml
Purification	Affinity-chromatography
Suggested Dilutions	WB 1:500-2000

Anti-Leptin Receptor LEPR Rabbit Monoclonal Antibody (M00350) Images



Western blot analysis of Leptin Receptor using anti-Leptin Receptor antibody (M00350). Electrophoresis was performed on a 5-20% SDS-PAGE gel at 70V (Stacking gel) / 90V (Resolving gel) for 2-3 hours. The sample well of each lane was loaded with 30 ug of sample under reducing conditions. Lane 1: human SH-SY5Y whole cell lysates, Lane 2: human K562 whole cell lysates, Lane 3: human HEL whole cell lysates, Lane 4: rat kidney tissue lysates, Lane 5: rat spleen tissue lysates, Lane 6: mouse kidney tissue lysates, Lane 7: mouse spleen tissue lysates. After electrophoresis, proteins were transferred to a nitrocellulose membrane at 150 mA for 50-90 minutes. Blocked the membrane with 5% non-fat milk/TBS for 1.5 hour at RT. The membrane was incubated with rabbit anti-Leptin Receptor antigen affinity purified monoclonal antibody (M00350) at 1:500 overnight at 4°C, then washed with TBS-0.1%Tween 3 times with 5 minutes each and probed with a goat anti-rabbit IgG-HRP secondary antibody at a dilution of 1:500 for 1.5 hour at RT. The signal is developed using an Enhanced Chemiluminescent detection (ECL) kit (Catalog # EK1002) with Tanon 5200 system. A specific band was detected for Leptin Receptor at approximately 150 kDa. The expected band size for Leptin Receptor is at 132 kDa.

2 Publications Citing This Product

1. PubMed ID: 33128919, Srinivasan G, Parida S, Pavithra S, Panigrahi M, Sahoo M, Singh TU, Madhu CL, Manickam K, Shyamkumar TS, Kumar D, Mishra SK. Leptin receptor stimulation in late pregnant mouse uterine tissue inhibits spontaneous contractions by increasing NO and cGMP. Cytokine. 2021
2. PubMed ID: 26529315, The Influence of LepR Tyrosine Site Mutations on Mouse Ovary Development and Related Gene Expression Changes

Visit [bosterbio.com/anti-leptin-receptor-rabbit-monoclonal-antibody-m00350-boster.html](https://www.bosterbio.com/anti-leptin-receptor-rabbit-monoclonal-antibody-m00350-boster.html) to see all 2 publications.

Submit a product review to Biocompare.com

Submit a review of this product to Biocompare.com to receive a \$20 Amazon.com giftcard! Your reviews help your fellow scientists make the right decisions. Thank you for your contribution.



Anti-Leptin Receptor LEPR Rabbit Monoclonal Antibody
For Research Use Only. Not for use in diagnostic procedures.