

Anti-Granzyme B GZMB Monoclonal Antibody

Catalog Number: M00353-1

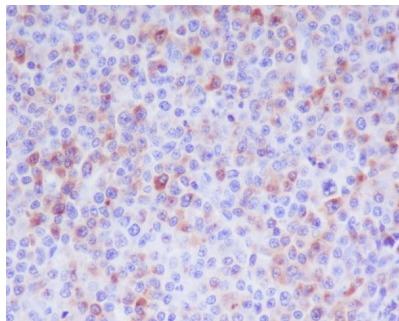
Overview

Product Name	Anti-Granzyme B GZMB Monoclonal Antibody
Reactive Species	Human
Description	Boster Bio Anti-Granzyme B GZMB Monoclonal Antibody catalog # M00353-1. Tested in IHC, ICC/IF, IP applications. This antibody reacts with Human.
Application	IP, IF, IHC, ICC
Clonality	Monoclonal AAHC-7
Formulation	Rabbit IgG in stabilizing components, phosphate buffered saline, pH 7.4, 150mM NaCl, 0.02% sodium azide and 50% glycerol. *This antibody is supplied in a stabilized formulation. Compatibility with conjugation reactions depends on the chemistry of the conjugation method used. For conjugation methods that are not compatible with the stabilizing components present in this formulation, a carrier-free antibody format is required.
Storage Instructions	Store at -20°C for one year. For short term storage and frequent use, store at 4°C for up to one month. Avoid repeated freeze-thaw cycles.
Host	Rabbit
Uniprot ID	P10144

Technical Details

Immunogen	A synthesized peptide derived from human Granzyme B This enzyme is necessary for target cell lysis in cell-mediated immune responses. It cleaves after Asp. Seems to be linked to an activation cascade of caspases (aspartate-specific cysteine proteases) responsible for apoptosis execution. Cleaves caspase-3, -7, -9 and 10 to give rise to active enzymes mediating apoptosis.
Isotype	Rabbit IgG
Form	Liquid
Concentration	0.5mg/ml
Purification	Affinity-chromatography
Suggested Dilutions	IHC 1:50-1:200 ICC/IF 1:50-1:200 IP 1:50

Anti-Granzyme B GZMB Monoclonal Antibody (M00353-1) Images



Immunohistochemical analysis of paraffin-embedded human T cell lymphoma, using Granzyme B Antibody.

Submit a product review to Biocompare.com

Submit a review of this product to Biocompare.com to receive a \$20 Amazon.com giftcard! Your reviews help your fellow scientists make the right decisions. Thank you for your contribution.



Anti-Granzyme B GZMB Monoclonal Antibody

For Research Use Only. Not for use in diagnostic procedures.