

## Anti-CEA (CD66e) Rabbit Monoclonal Antibody, Clone#RM326

Catalog Number: M00356-3

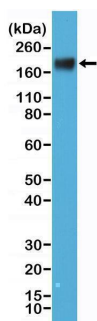
### Overview

Product Name	Anti-CEA (CD66e) Rabbit Monoclonal Antibody, Clone#RM326
Reactive Species	Human
Description	Boster Bio Anti-CEA (CD66e) Rabbit Monoclonal Antibody, Clone#RM326 (Catalog # M00356-3). Tested in IHC, WB, ELISA applications. This antibody reacts with Human.
Application	ELISA, IHC, WB
Clonality	Monoclonal RM326
Formulation	50% Glycerol/PBS with 1% stabilizing protein and 0.09% sodium azide This antibody is supplied in a stabilized formulation. Compatibility with conjugation reactions depends on the chemistry of the conjugation method used. For conjugation methods that are not compatible with the stabilizing components present in this formulation, a carrier-free antibody format is required.
Storage Instructions	Store at -20°C for one year. Avoid repeated freeze-thaw cycles.
Host	Rabbit
Uniprot ID	P06731

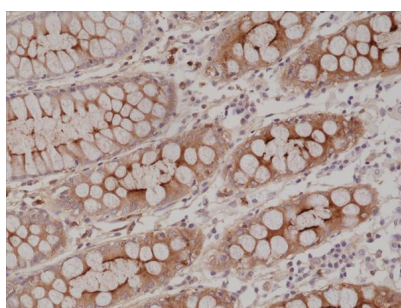
### Technical Details

Immunogen	Native CEA protein purified from human liver tissue.
Cross Reactivity	This antibody reacts to human CEA (Carcinoembryonic Antigen) (CD66e).
Isotype	Rabbit IgG
Form	Liquid
Concentration	0.5-1mg/ml, actual concentration vary by lot. Use suggested dilution ratio to decide dilution procedure.
Purification	Protein A affinity purified from an animal origin-free culture supernatant
Suggested Dilutions	Immunohistochemistry (IHC): 1:1000-1:2000 dilution WB: 1:1000-1:2000 dilution ELISA: 1:1000-1:5000 dilution.

## Anti-CEA (CD66e) Rabbit Monoclonal Antibody, Clone#RM326 (M00356-3) Images



Western Blotting result  
Western Blot of MCF-7 cell lysate using anti-CEA rabbit monoclonal antibody (Clone RM326) at a 1:1000 dilution.



IHC result  
Immunohistochemical staining of formalin fixed and paraffin embedded human colon tissue section using anti-CEA rabbit monoclonal antibody (Clone RM326) at a 1:2000 dilution.

### Submit a product review to Biocompare.com

Submit a review of this product to Biocompare.com to receive a \$20 Amazon.com giftcard! Your reviews help your fellow scientists make the right decisions. Thank you for your contribution.



Anti-CEA (CD66e) Rabbit Monoclonal Antibody, Clone#RM326

For Research Use Only. Not for use in diagnostic procedures.