

Anti-Thyroglobulin TG Monoclonal Antibody

Catalog Number: M00359

About TG

Thyroglobulin (Tg) is synthesized by the follicular epithelial cells of the thyroid and secreted from the thyroid gland with the stimulation of TSH and/or thyroid stimulating immunoglobulins. Thyroglobulin is a prognostic marker for Graves` disease. Thyroglobulin antibody has been useful in the positive identification of thyroid carcinomas of the papillary and follicular types.

Overview

Product Name	Anti-Thyroglobulin TG Monoclonal Antibody
Reactive Species	Canine, Human, Mouse, Rat
Description	Boster Bio Anti-Thyroglobulin TG Monoclonal Antibody (Catalog # M00359). Tested in WB applications. This antibody reacts with Human, Mouse, Rat, Dog.
Application	ELISA, IHC, WB
Clonality	Monoclonal Clone: 2H11
Formulation	0.02 M Potassium Phosphate, 0.5 M Sodium Chloride, pH 7.2, 0.01% (w/v) Sodium Azide
Storage Instructions	Store vial at -20°C prior to opening. Aliquot contents and freeze at -20°C or below for extended storage. Avoid cycles of freezing and thawing. Centrifuge product if not completely clear after standing at room temperature. This product is stable for several weeks at 4°C as an undiluted liquid. Dilute only prior to immediate use. Expiration date is one (1) year from date of opening. (Ship on dry ice.)
Host	Mouse
Uniprot ID	P01266

Technical Details

Immunogen	This protein A purified monoclonal antibody was produced by repeated immunizations with human thyroglobulin protein.
Predicted Reactive Species	Canine
Cross Reactivity	No cross reactivity with other proteins.
Isotype	IgG1
Form	Liquid (sterile filtered)
Concentration	1.6 mg/ml by UV absorbance at 280 nm
Purification	This protein A purified mouse monoclonal antibody reacts specifically with thyroglobulin in human

tissues. The antibody recognizes a 330-kDa band corresponding to thyroglobulin. Cross-reactivity with thyroglobulin from mouse, rat and dog will occur. Cross-reactivity with thyroglobulin from other sources has not been determined.

Suggested Dilutions

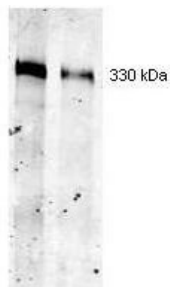
ELISA: 1:20,000 - 1:100,000

IHC: 1:50 - 1:200

WB: 1:50 - 1:200

Anti-Thyroglobulin antibody has been tested by western blot and is suitable for the detection of thyroglobulin in ELISA, immunohistochemistry, and immunoprecipitation. For immunohistochemistry, both frozen sections and formalin fixed, paraffin-embedded tissue sections can be used without epitope retrieval or enzyme digestion. This antibody is specific for the 330 kDa thyroglobulin protein. Thyroglobulin shows a cytoplasmic localization. Thyroid tissue can be used as a positive control.

Anti-Thyroglobulin TG Monoclonal Antibody (M00359) Images



Western blot using Boster Immunochemical's Mouse Mab-anti-Thyroglobulin antibody. Separation was achieved under reducing conditions using a pre-cast 5% Tris-HCl gel from Bio-Rad Laboratories. This antibody recognizes a single 330 kDa band corresponding to human thyroglobulin (left lane 3 µg, right lane 3 ng) as confirmed by the position of molecular weight markers (not shown). A 1:400 dilution of Mab anti-Thyroglobulin was used for 2h followed by detection using a 1:5,000 dilution of IRDye™ 800 conjugated Goat-a-Mouse IgG [H&L] (610-132-121) and visualization using the Odyssey® Infrared Imaging System developed by LI-COR. Other detection systems will yield similar results. IRDye is a trademark of LI-COR, Inc.

Submit a product review to Biocompare.com

Submit a review of this product to Biocompare.com to receive a \$20 Amazon.com giftcard! Your reviews help your fellow scientists make the right decisions. Thank you for your contribution.



Anti-Thyroglobulin TG Monoclonal Antibody

For Research Use Only. Not for use in diagnostic procedures.