

## Anti-TMS1 (PYCARD) Mouse Monoclonal Antibody [Clone ID: OTI3E9]

Catalog Number: M00362-1

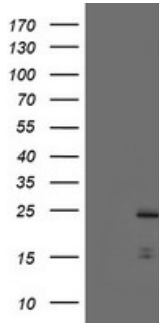
### Overview

Product Name	Anti-TMS1 (PYCARD) Mouse Monoclonal Antibody [Clone ID: OTI3E9]
Reactive Species	Human
Description	Boster Bio PYCARD (TMS1) mouse monoclonal antibody, clone OTI3E9 (formerly 3E9). Catalog# M00362-1. Tested in FC, IHC, WB. This antibody reacts with Human.
Application	Flow Cytometry, IHC, WB
Clonality	Monoclonal OTI3E9
Formulation	PBS (pH 7.3) containing 1% stabilizing protein, 50% glycerol and 0.02% sodium azide. This antibody is supplied in a stabilized formulation. Compatibility with conjugation reactions depends on the chemistry of the conjugation method used. For conjugation methods that are not compatible with the stabilizing components present in this formulation, a carrier-free antibody format is required.
Storage Instructions	Store at -20°C as received.
Host	Mouse
Uniprot ID	Q9ULZ3

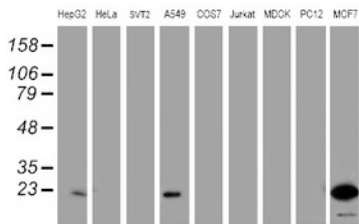
### Technical Details

Immunogen	Full length human recombinant protein of human PYCARD (NP_037390) produced in E.coli.
Isotype	IgG1
Concentration	1 mg/ml
Purification	Purified from mouse ascites fluids or tissue culture supernatant by affinity chromatography (protein A/G)
Suggested Dilutions	WB 1:500~2000 IHC 1:150 Flow Cytometry 1:100

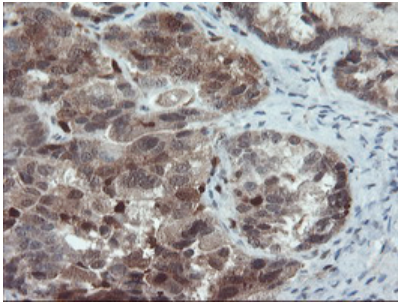
## Anti-TMS1 (PYCARD) Mouse Monoclonal Antibody [Clone ID: OTI3E9] (M00362-1) Images



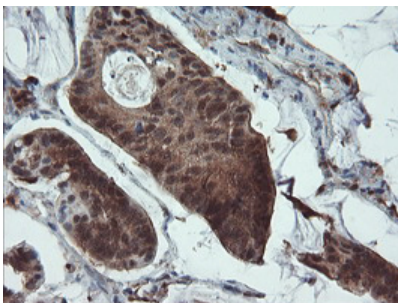
HEK293T cells were transfected with the pCMV6-ENTRY control (Left lane) or pCMV6-ENTRY PYCARD (Right lane) cDNA for 48 hrs and lysed. Equivalent amounts of cell lysates (5 ug per lane) were separated by SDS-PAGE and immunoblotted with anti-PYCARD.



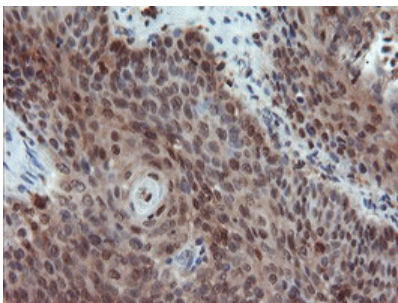
Western blot analysis of extracts (35ug) from 9 different cell lines by using anti-PYCARD monoclonal antibody (HepG2: human; HeLa: human; SVT2: mouse; A549: human; COS7: monkey; Jurkat: human; MDCK: canine; PC12: rat; MCF7: human).



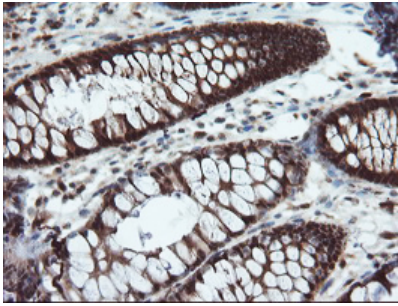
Immunohistochemical staining of paraffin-embedded Adenocarcinoma of Human ovary tissue using anti-PYCARD mouse monoclonal antibody. (Heat-induced epitope retrieval by 10mM citric buffer)



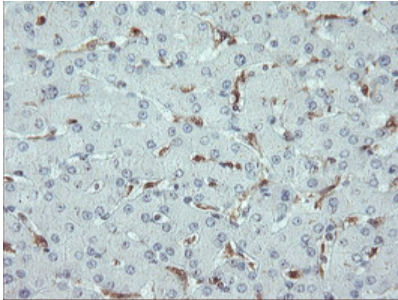
Immunohistochemical staining of paraffin-embedded Carcinoma of Human pancreas tissue using anti-PYCARD mouse monoclonal antibody. (Heat-induced epitope retrieval by 10mM citric buffer)



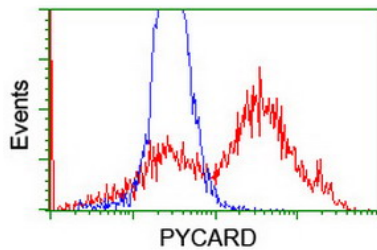
Immunohistochemical staining of paraffin-embedded Carcinoma of Human bladder tissue using anti-PYCARD mouse monoclonal antibody. (Heat-induced epitope retrieval by 10mM citric buffer)



Immunohistochemical staining of paraffin-embedded Human colon tissue within the normal limits using anti-PYCARD mouse monoclonal antibody. (Heat-induced epitope retrieval by 10mM citric buffer)



Immunohistochemical staining of paraffin-embedded Human liver tissue within the normal limits using anti-PYCARD mouse monoclonal antibody. (Heat-induced epitope retrieval by 10mM citric buffer)



HEK293T cells transfected with either PYCARD (Myc-DDK-tagged) overexpress plasmid (Red) or empty vector control plasmid (Blue) were immunostained by anti-PYCARD antibody (M00362-1)

## Submit a product review to Biocompare.com

Submit a review of this product to Biocompare.com to receive a \$20 Amazon.com giftcard! Your reviews help your fellow scientists make the right decisions. Thank you for your contribution.



Anti-TMS1 (PYCARD) Mouse Monoclonal Antibody [Clone ID: OTI3E9]

For Research Use Only. Not for use in diagnostic procedures.