

Anti-Elafin/Skalp PI3 Antibody Picoband™ (monoclonal, C7)

Catalog Number: M00364

About PI3

Elafin, also known as peptidase inhibitor 3 or skin-derived antileukoprotease (SKALP), is a protein that in humans is encoded by the PI3 gene. This gene encodes an elastase-specific inhibitor that functions as an antimicrobial peptide against Gram-positive and Gram-negative bacteria, and fungal pathogens. The protein contains a WAP-type four-disulfide core (WFDC) domain, and is thus a member of the WFDC domain family. Most WFDC gene members are localized to chromosome 20q12-q13 in two clusters: centromeric and telomeric. And this gene belongs to the centromeric cluster. Expression of this gene is upregulated by bacterial lipopolysaccharides and cytokines.

Overview

Product Name	Anti-Elafin/Skalp PI3 Antibody Picoband™ (monoclonal, C7)
Reactive Species	Human
Description	Boster Bio Anti-Elafin/Skalp PI3 Antibody Picoband™ (monoclonal, C7) catalog # M00364. Tested in ELISA, IHC applications. This antibody reacts with Human.
Application	ELISA, IHC
Clonality	Monoclonal C7
Formulation	Each vial contains 4mg Trehalose, 0.9mg NaCl, 0.2mg Na2HPO4, 0.05mg NaN3.
Storage Instructions	Store at -20°C for one year from date of receipt. After reconstitution, at 4°C for one month. It can also be aliquotted and stored frozen at -20°C for six months. Avoid repeated freeze-thaw cycles.
Host	Mouse
Uniprot ID	P19957

Technical Details

Immunogen	E. coli-derived human Elafin/Skalp recombinant protein (Position: A61-Q117).
Predicted Reactive Species	Hepatitis Virus
Recommended Detection Systems	Boster recommends HRP Conjugated anti-Mouse IgG Super Vision Assay Kit (SV0001-1) for IHC(P).
Cross Reactivity	No cross-reactivity with other proteins.
Isotype	Mouse IgG1
Form	Lyophilized
Concentration	Adding 0.2 ml of distilled water will yield a concentration of 500 ug/ml.
Purification	Immunogen affinity purified.

Suggested Dilutions

Dilute the sample so that the expected range of concentrations fall within the detection range of this kit.

If the expected range of concentration is unknown, a pilot test should be conducted to decide the optimal dilution ratio for your samples.

Some PubMed article(s) citing the expression level of this target are as follows:

Boster Bio's internal QC testing used:

Immunohistochemistry (Paraffin-embedded Section), 0.5-1ug/ml

ELISA (Cap), 1-5ug/ml

Anti-Elafin/Skalp PI3 Antibody Picoband™ (monoclonal, C7) (M00364) Images

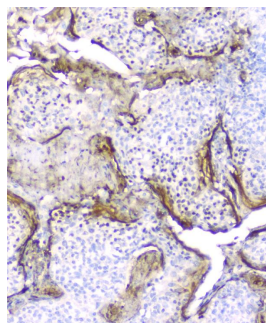


Figure 1. IHC analysis of Elafin using anti-Elafin antibody (M00364).
Elafin was detected in paraffin-embedded section of human tonsil tissue. Heat mediated antigen retrieval was performed in citrate buffer (pH6, epitope retrieval solution) for 20 mins. The tissue section was blocked with 10% goat serum. The tissue section was then incubated with 2ug/ml mouse anti-Elafin Antibody (M00364) overnight at 4°C. Biotinylated goat anti-mouse IgG was used as secondary antibody and incubated for 30 minutes at 37°C. The tissue section was developed using Streptavidin-Biotin-Complex (SABC)(Catalog # SA1021) with DAB as the chromogen.

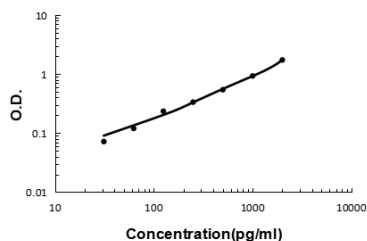


Figure 2. Sandwich ELISA - Recombinant human Elafin/Skalp protein standard curve.
Use in combination with reagents from Human Elafin/Skalp ELISA Kit EZ-Set (DIY Antibody Pairs) (EZ1117).

Submit a product review to Biocompare.com

Submit a review of this product to Biocompare.com to receive a \$20 Amazon.com giftcard! Your reviews help your fellow scientists make the right decisions. Thank you for your contribution.



Anti-Elafin/Skalp PI3 Antibody (monoclonal, C7)