

Anti-PDGF Receptor alpha (PDGFRA) Mouse Monoclonal Antibody [Clone ID: OTI1C10]

Catalog Number: M00366-2

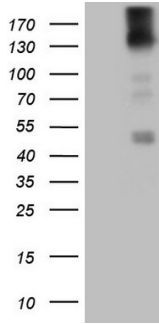
Overview

Product Name	Anti-PDGF Receptor alpha (PDGFRA) Mouse Monoclonal Antibody [Clone ID: OTI1C10]
Reactive Species	Human, Mouse, Rat
Description	Boster Bio PDGFRA mouse monoclonal antibody, clone OTI1C10 (formerly 1C10). Catalog# M00366-2. Tested in WB. This antibody reacts with Human, Mouse, Rat.
Conjugate	Unconjugated
Application	WB
Clonality	Monoclonal OTI1C10
Formulation	PBS (pH 7.3) containing 1% stabilizing protein, 50% glycerol and 0.02% sodium azide. This antibody is supplied in a stabilized formulation. Compatibility with conjugation reactions depends on the chemistry of the conjugation method used. For conjugation methods that are not compatible with the stabilizing components present in this formulation, a carrier-free antibody format is required.
Storage Instructions	Store at -20°C for one year. For short term storage and frequent use, store at 4°C for up to one month. Avoid repeated freeze-thaw cycles.
Host	Mouse
Uniprot ID	P16234

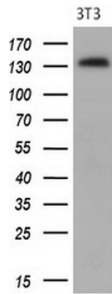
Technical Details

Immunogen	Human recombinant protein fragment corresponding to amino acids 789-1089 of human PDGFRA (NP_006197) produced in E.coli.
Isotype	IgG1
Concentration	1 mg/ml
Purification	Purified from mouse ascites fluids or tissue culture supernatant by affinity chromatography (protein A/G)
Suggested Dilutions	WB 1:2000

Anti-PDGFR alpha (PDGFRA) Mouse Monoclonal Antibody [Clone ID: OTI1C10] (M00366-2) Images



HEK293T cells were transfected with the pCMV6-ENTRY control (Left lane) or pCMV6-ENTRY PDGFRA (Right lane) cDNA for 48 hrs and lysed. Equivalent amounts of cell lysates (5 ug per lane) were separated by SDS-PAGE and immunoblotted with anti-PDGFR alpha (1:2000).



Western blot analysis of extracts (10ug) from NIH/3T3 mouse cell line by using anti-PDGFR alpha monoclonal antibody (1:200).

Submit a product review to Biocompare.com

Submit a review of this product to Biocompare.com to receive a \$20 Amazon.com giftcard! Your reviews help your fellow scientists make the right decisions. Thank you for your contribution.



Anti-PDGFR alpha (PDGFRA) Mouse Monoclonal Antibody [Clone ID: OTI1C10]

For Research Use Only. Not for use in diagnostic procedures.