

Anti-CD1a / HTA1 (Mature Langerhans Cells Marker) Monoclonal Antibody

Catalog Number: M00375

About CD1A

At least five CD1 genes (CD1a, b, c, d, and e) are identified. CD1 proteins have been demonstrated to restrict T cell response to non-peptide lipid and glycolipid antigens and play a role in non-classical antigen presentation. CD1a is a non-polymorphic MHC Class 1 related cell surface glycoprotein, expressed in association with Beta-2 microglobulin. Anti-CD1a labels Langerhans cell histiocytosis (Histiocytosis X), extranodal histiocytic sarcoma, a subset of T-lymphoblastic lymphoma/leukemia, and interdigitating dendritic cell sarcoma of the lymph node. When combined with antibodies against TTF-1 and CD5, anti-CD1a is useful in distinguishing between pulmonary and thymic neoplasms since CD1a is consistently expressed in thymic lymphocytes in both typical and atypical thymomas, but only focally in 1/6 of thymic carcinomas and not in lymphocytes in pulmonary neoplasms. Anti-CD1a is reported to be a new marker for perivascular epithelial cell tumor (PEComa).

Overview

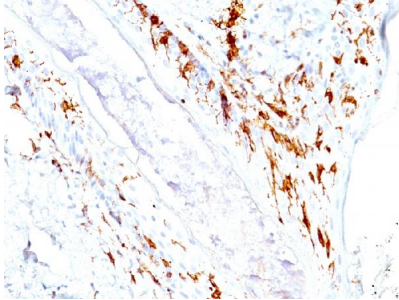
Product Name	Anti-CD1a / HTA1 (Mature Langerhans Cells Marker) Monoclonal Antibody
Reactive Species	Human
Description	Boster Bio Anti-CD1a / HTA1 (Mature Langerhans Cells Marker) Monoclonal Antibody (Catalog # M00375). Tested in Flow Cytometry, IF, IHC applications. This antibody reacts with Human.
Conjugate	Biotin
Application	Flow Cytometry, IF, IHC
Clonality	Monoclonal Clone: O10 + C1A/711
Formulation	Prepared in 10mM PBS with 0.05% BSA & 0.05% azide. Also available WITHOUT BSA & azide at 1.0mg/ml.
Storage Instructions	Antibody with azide - store at 2 to 8°C. Antibody without azide - store at -20 to -80°C. Antibody is stable for 24 months. Non-hazardous. No MSDS required.
Host	Mouse
Uniprot ID	P06126

Technical Details

Immunogen	Human thymus cells (O10); Recombinant human CD1a protein (C1A/711)
Predicted Reactive Species	Bovine, Canine, Mouse, Orangutan, Pig, Rabbit, Rat, Deer
Isotype	IgG1, kappa + IgG1, kappa
Form	Liquid

Concentration	Purified antibody with BSA and azide at 200ug/ml
Purification	200ug/ml of antibody purified from Bioreactor Concentrate by Protein A/G.
Suggested Dilutions	<p>Dilute the sample so that the expected range of concentrations fall within the detection range of this kit.</p> <p>If the expected range of concentration is unknown, a pilot test should be conducted to decide the optimal dilution ratio for your samples.</p> <p>Some PubMed article(s) citing the expression level of this target are as follows:</p> <p>Boster Bio's internal QC testing used:</p> <p>Flow Cytometry (1-2ug/million cells)</p> <p>Immunofluorescence (1-2ug/ml)</p> <p>Immunohistochemistry (Formalin-fixed) (1-2ug/ml for 30 min at RT)(Staining of formalin-fixed tissues requires heating tissue sections in 10mM Tris with 1mM EDTA, pH 9.0, for 45 min at 95&degC followed by cooling at RT for 20 minutes)</p> <p>Optimal dilution for a specific application should be determined.</p>

Anti-CD1a / HTA1 (Mature Langerhans Cells Marker) Monoclonal Antibody (M00375) Images



Formalin-fixed, paraffin-embedded human Skin stained with Anti-CD1a Monoclonal Antibody (O10+C1A/711).

Submit a product review to Biocompare.com

Submit a review of this product to Biocompare.com to receive a \$20 Amazon.com giftcard! Your reviews help your fellow scientists make the right decisions. Thank you for your contribution.



Anti-CD1a / HTA1 (Mature Langerhans Cells Marker) Monoclonal Antibody