

## Anti-EGF Mouse Monoclonal Antibody [Clone ID: OTI2F9]

Catalog Number: M00378-1

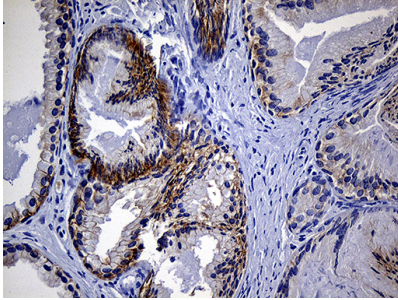
### Overview

|                      |  |
|----------------------|--|
| Product Name         | Anti-EGF Mouse Monoclonal Antibody [Clone ID: OTI2F9]  |
| Reactive Species     | Human  |
| Description          | Boster Bio EGF mouse monoclonal antibody, clone OTI2F9. Catalog# M00378-1. Tested in IHC, WB. This antibody reacts with Human.   |
| Conjugate            | Unconjugated   |
| Application          | IHC, WB  |
| Clonality            | Monoclonal OTI2F9  |
| Formulation          | PBS (pH 7.3) containing 1% stabilizing protein, 50% glycerol and 0.02% sodium azide. This antibody is supplied in a stabilized formulation. Compatibility with conjugation reactions depends on the chemistry of the conjugation method used. For conjugation methods that are not compatible with the stabilizing components present in this formulation, a carrier-free antibody format is required. |
| Storage Instructions | Store at -20°C for one year. For short term storage and frequent use, store at 4°C for up to one month. Avoid repeated freeze-thaw cycles.   |
| Host                 | Mouse  |
| Uniprot ID           | P01133   |

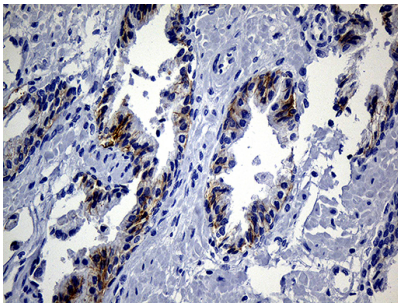
### Technical Details

|                     |  |
|---------------------|--|
| Immunogen           | Human recombinant protein fragment corresponding to amino acids 1054-1207 of human EGF (NP_001954) produced in E.coli. |
| Isotype             | IgG1   |
| Concentration       | 1 mg/ml  |
| Purification        | Purified from mouse ascites fluids or tissue culture supernatant by affinity chromatography (protein A/G)              |
| Suggested Dilutions | IHC 1:150  |

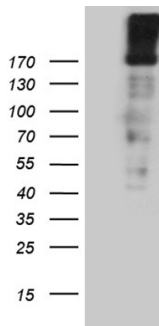
## Anti-EGF Mouse Monoclonal Antibody [Clone ID: OTI2F9] (M00378-1) Images



Immunohistochemical staining of paraffin-embedded Human prostate tissue within the normal limits using anti-EGF mouse monoclonal antibody. (Heat-induced epitope retrieval by 1mM EDTA in 10mM Tris buffer (pH8.5) at 120°C for 3min)



Immunohistochemical staining of paraffin-embedded Carcinoma of Human prostate tissue using anti-EGF mouse monoclonal antibody. (Heat-induced epitope retrieval by 1mM EDTA in 10mM Tris buffer (pH8.5) at 120°C for 3min)



HEK293T cells were transfected with the pCMV6-ENTRY control (Left lane) or pCMV6-ENTRY EGF (Right lane) cDNA for 48 hrs and lysed. Equivalent amounts of cell lysates (5 ug per lane) were separated by SDS-PAGE and immunoblotted with anti-EGF (1:2000).

### Submit a product review to Biocompare.com

Submit a review of this product to Biocompare.com to receive a \$20 Amazon.com giftcard! Your reviews help your fellow scientists make the right decisions. Thank you for your contribution.



Anti-EGF Mouse Monoclonal Antibody [Clone ID: OTI2F9]

For Research Use Only. Not for use in diagnostic procedures.