

Anti-CEBP alpha Rabbit Monoclonal Antibody

Catalog Number: M00386

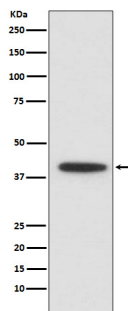
Overview

Product Name	Anti-CEBP alpha Rabbit Monoclonal Antibody
Reactive Species	Human, Mouse, Rat
Description	Boster Bio Anti-CEBP alpha Rabbit Monoclonal Antibody catalog # M00386. Tested in WB, IP, Flow Cytometry applications. This antibody reacts with Human, Mouse, Rat.
Application	Flow Cytometry, IP, WB
Clonality	Monoclonal FIE-3
Formulation	Rabbit IgG in stabilizing components, phosphate buffered saline, pH 7.4, 150mM NaCl, 0.02% sodium azide and 50% glycerol. *This antibody is supplied in a stabilized formulation. Compatibility with conjugation reactions depends on the chemistry of the conjugation method used. For conjugation methods that are not compatible with the stabilizing components present in this formulation, a carrier-free antibody format is required.
Storage Instructions	Store at -20°C for one year. For short term storage and frequent use, store at 4°C for up to one month. Avoid repeated freeze-thaw cycles.
Host	Rabbit
Uniprot ID	P49715

Technical Details

Immunogen	A synthesized peptide derived from human CEBP alpha
Isotype	Rabbit IgG
Form	Liquid
Concentration	0.5mg/ml
Purification	Affinity-chromatography
Suggested Dilutions	WB 1:500-1:1000 IP 1:50 FC 1:50

Anti-CEBP alpha Rabbit Monoclonal Antibody (M00386) Images



Western blot analysis of CEBP alpha expression in U937 cell lysate.

1 Publications Citing This Product

1. PubMed ID: 32018039, Chen G,Wang Q,Li Z,Yang Q,Liu Y,Du Z,Zhang G,Song Y.Circular RNA CDR1as promotes adipogenic and suppresses osteogenic differentiation of BMSCs in steroid-induced osteonecrosis of the femoral head.Bone.2020 Apr;133:115258.doi:10.1016/j.bone.2020.115258.Epub

Visit [bosterbio.com/anti-cebp-alpha-rabbit-monoclonal-antibody-m00386-boster.html](https://www.bosterbio.com/anti-cebp-alpha-rabbit-monoclonal-antibody-m00386-boster.html) to see all 1 publications.

Submit a product review to Biocompare.com

Submit a review of this product to Biocompare.com to receive a \$20 Amazon.com giftcard! Your reviews help your fellow scientists make the right decisions. Thank you for your contribution.



Anti-CEBP alpha Rabbit Monoclonal Antibody

For Research Use Only. Not for use in diagnostic procedures.