

Anti-CCR7 Rabbit Monoclonal Antibody

Catalog Number: M00390

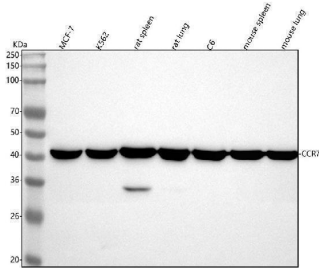
Overview

Product Name	Anti-CCR7 Rabbit Monoclonal Antibody
Reactive Species	Human, Mouse, Rat
Description	Boster Bio Anti-CCR7 Rabbit Monoclonal Antibody catalog # M00390. Tested in WB, IHC, ICC/IF, IP applications. This antibody reacts with Human, Mouse, Rat.
Application	IP, IF, IHC, ICC, WB
Clonality	Monoclonal CFO-3
Formulation	Rabbit IgG in stabilizing components, phosphate buffered saline, pH 7.4, 150mM NaCl, 0.02% sodium azide and 50% glycerol. *This antibody is supplied in a stabilized formulation. Compatibility with conjugation reactions depends on the chemistry of the conjugation method used. For conjugation methods that are not compatible with the stabilizing components present in this formulation, a carrier-free antibody format is required.
Storage Instructions	Store at -20°C for one year. For short term storage and frequent use, store at 4°C for up to one month. Avoid repeated freeze-thaw cycles.
Host	Rabbit
Uniprot ID	P32248

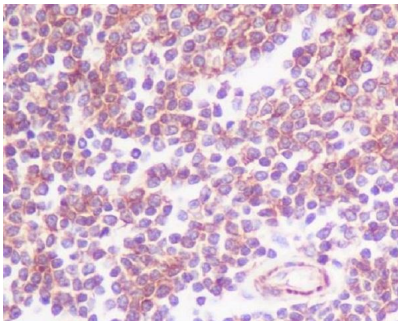
Technical Details

Immunogen	A synthesized peptide derived from human CCR7
Isotype	Rabbit IgG
Form	Liquid
Concentration	0.5mg/ml
Purification	Affinity-chromatography
Suggested Dilutions	WB 1:500-2000 IHC 1:50-200 ICC/IF 1:50-200 IP 1:20

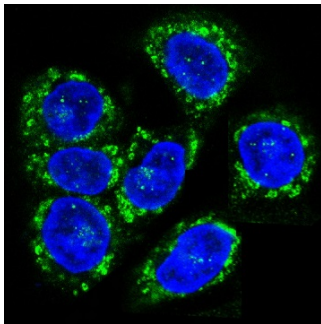
Anti-CCR7 Rabbit Monoclonal Antibody (M00390) Images



Western blot analysis of CCR7 using anti-CCR7 antibody (M00390). Electrophoresis was performed on a 5-20% SDS-PAGE gel at 70V (Stacking gel) / 90V (Resolving gel) for 2-3 hours. The sample well of each lane was loaded with 30 ug of sample under reducing conditions. Lane 1: human MCF-7 whole cell lysates, Lane 2: human K562 whole cell lysates, Lane 3: rat spleen tissue lysates, Lane 4: rat lung tissue lysates, Lane 5: rat C6 whole cell lysates, Lane 6: mouse spleen tissue lysates, Lane 7: mouse lung tissue lysates. After electrophoresis, proteins were transferred to a nitrocellulose membrane at 150 mA for 50-90 minutes. Blocked the membrane with 5% non-fat milk/TBS for 1.5 hour at RT. The membrane was incubated with rabbit anti-CCR7 antigen affinity purified monoclonal antibody (Catalog # M00390) at 1:500 overnight at 4°C, then washed with TBS-0.1%Tween 3 times with 5 minutes each and probed with a goat anti-rabbit IgG-HRP secondary antibody at a dilution of 1:500 for 1.5 hour at RT. The signal is developed using an Enhanced Chemiluminescent detection (ECL) kit (Catalog # EK1002) with Tanon 5200 system. A specific band was detected for CCR7 at approximately 43 kDa. The expected band size for CCR7 is at 43 kDa.



Immunohistochemical analysis of paraffin-embedded human spleen, using CCR7 Antibody.



Immunofluorescent analysis of HeLa cells, using CCR7 Antibody .

1 Publications Citing This Product

1. PubMed ID: 25798926, Mo M, Zhou M, Wang L, Qi L, Zhou K, Liu Lf, Chen Z, Zu Xb. Plos One. 2015 Mar 23;10(3):E0119506. Doi: 10.1371/Journal.Pone.0119506. Ecollection 2015. Ccl21/Ccr7 Enhances The Proliferation, Migration, And Invasion Of Human Bladder Cancer T24 Cells.

Visit bosterbio.com/anti-ccr7-rabbit-monoclonal-antibody-m00390-boster.html to see all 1 publications.

Submit a product review to Biocompare.com

Submit a review of this product to Biocompare.com to receive a \$20 Amazon.com giftcard! Your reviews help your fellow scientists make the right decisions. Thank you for your contribution.



Anti-CCR7 Rabbit Monoclonal Antibody

For Research Use Only. Not for use in diagnostic procedures.