

Anti-Interferon gamma IFNG Rabbit Monoclonal Antibody

Catalog Number: M00393-1

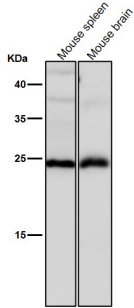
Overview

| | |
|----------------------|--|
| Product Name | Anti-Interferon gamma IFNG Rabbit Monoclonal Antibody |
| Reactive Species | Human, Mouse, Rat |
| Description | Boster Bio Anti-Interferon gamma IFNG Rabbit Monoclonal Antibody catalog # M00393-1. Tested in WB, ICC/IF, Flow Cytometry applications. This antibody reacts with Human, Mouse, Rat. |
| Application | Flow Cytometry, IF, ICC, WB |
| Clonality | Monoclonal AOFD-9 |
| Formulation | Rabbit IgG in stabilizing components, phosphate buffered saline, pH 7.4, 150mM NaCl, 0.02% sodium azide and 50% glycerol. *This antibody is supplied in a stabilized formulation. Compatibility with conjugation reactions depends on the chemistry of the conjugation method used. For conjugation methods that are not compatible with the stabilizing components present in this formulation, a carrier-free antibody format is required. |
| Storage Instructions | Store at -20°C for one year. For short term storage and frequent use, store at 4°C for up to one month. Avoid repeated freeze-thaw cycles. |
| Host | Rabbit |
| Uniprot ID | P01579 |

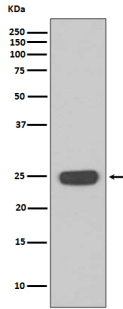
Technical Details

| | |
|---------------------|---|
| Immunogen | A synthesized peptide derived from human Interferon gamma |
| Isotype | Rabbit IgG |
| Form | Liquid |
| Concentration | 0.5mg/ml |
| Purification | Affinity-chromatography |
| Suggested Dilutions | WB 1:500-2000 ICC/IF 1:50-200 FC 1:20 |

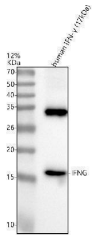
Anti-Interferon gamma IFNG Rabbit Monoclonal Antibody (M00393-1) Images



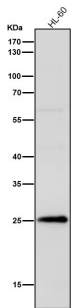
All lanes use the Antibody at 1:1k dilution for 1 hour at room temperature.



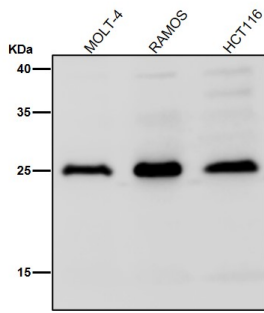
Western blot analysis of Interferon gamma expression in Jurkat cell lysate.



Western blot analysis of IFNG using anti-IFNG antibody (M00393-1). Electrophoresis was performed on a 12% SDS-PAGE gel at 80V (Stacking gel) / 120V (Resolving gel) for 2 hours. The sample well of each lane was loaded with 30 ug of sample under reducing conditions. Lane 1: recombinant human IFNG protein. After electrophoresis, proteins were transferred to a nitrocellulose membrane at 150 mA for 50-90 minutes. Blocked the membrane with 5% non-fat milk/TBS for 1.5 hour at RT. The membrane was incubated with rabbit anti-IFNG antigen affinity purified monoclonal antibody (M00393-1) at 1:500 overnight at 4°C, then washed with TBS-10%%Tween 3 times with 5 minutes each and probed with a goat anti-rabbit IgG-HRP secondary antibody at a dilution of 1:5000 for 1.5 hour at RT. The signal is developed using an ECL Plus Western Blotting Substrate (Catalog # AR1196-200) with Tanon 5200 system. A specific band was detected for IFNG at approximately 17 kDa. The expected band size for IFNG is at 17 kDa.



All lanes use the Antibody at 1:1k dilution for 1 hour at room temperature.



All lanes use the Antibody at 1:1k dilution for 1 hour at room temperature.

5 Publications Citing This Product

1. PubMed ID: 31864210, Li Q, Sun J, Cao Y, Liu B, Li L, Mohammadtursun N, Zhang H, Dong J, Wu J. Bu-Shen-Fang-Chuan formula attenuates T-lymphocytes recruitment in the lung of rats with COPD through suppressing CXCL9/CXCL10/CXCL11-CXCR3 axis. *Biomed Pharmacother.* 2020 Mar;123:109735. doi:1
2. PubMed ID: 26222793, Somatostatin Improved B Cells Mature in Macaques during Intestinal Ischemia-Reperfusion
3. PubMed ID: 25483698, Yan X, Wang D, Liang F, Fu L, Guo C. Hum Vaccin Immunother. 2014;10(12):3491-8. Doi: 10.4161/Hv.36084. Hpv16L1-Attenuated Shigella Recombinant Vaccine Induced Strong Vaginal And Systemic Immune Responses In Guinea Pig Model.

Visit bosterbio.com/anti-interferon-gamma-rabbit-monoclonal-antibody-m00393-1-boster.html to see all 5 publications.

Submit a product review to Biocompare.com

Submit a review of this product to Biocompare.com to receive a \$20 Amazon.com giftcard! Your reviews help your fellow scientists make the right decisions. Thank you for your contribution.



Anti-Interferon gamma IFNG Rabbit Monoclonal Antibody

For Research Use Only. Not for use in diagnostic procedures.