

Anti-Cytokeratin 5 Rabbit Monoclonal Antibody, Clone#RM226

Catalog Number: M00398-3

Overview

Product Name	Anti-Cytokeratin 5 Rabbit Monoclonal Antibody, Clone#RM226
Reactive Species	Human
Description	Boster Bio Anti-Cytokeratin 5 Rabbit Monoclonal Antibody, Clone#RM226 (Catalog # M00398-3). Tested in IHC, WB applications. This antibody reacts with Human.
Application	IHC, WB
Clonality	Monoclonal RM226
Formulation	50% Glycerol/PBS with 1% BSA and 0.09% sodium azide
Storage Instructions	Store at -20°C for one year. Avoid repeated freeze-thaw cycles.
Host	Rabbit
Uniprot ID	P13647

Technical Details

Immunogen	A peptide corresponding to the C-terminus of Human Cytokeratin 5
Cross Reactivity	This antibody reacts to Human Cytokeratin 5. This antibody may also react to bovine, mouse, or rat Cytokeratin, as predicted by immunogen homology.
Isotype	Rabbit IgG
Form	Liquid
Concentration	0.5-1mg/ml, actual concentration vary by lot. Use suggested dilution ratio to decide dilution procedure.
Purification	Protein A affinity purified from an animal origin-free culture supernatant
Suggested Dilutions	Immunohistochemistry (IHC): 1:100 dilution WB: 1:1000 dilution.

Anti-Cytokeratin 5 Rabbit Monoclonal Antibody, Clone#RM226 (M00398-3) Images

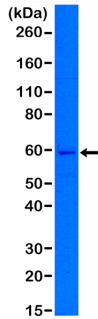


Figure 1. Western Blotting result
Western Blot of A431 cell lysates using RM226 using Anti-CK-5 rabbit monoclonal antibody (Clone RM226) at a 1:1000 dilution.

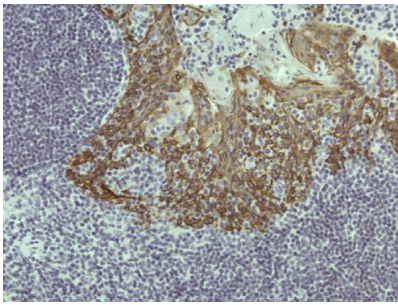


Figure 2. IHC result
Immunohistochemical staining of formalin fixed and paraffin embedded human tonsil tissue sections.

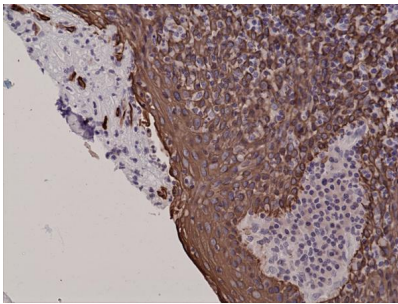


Figure 3. IHC result
Immunohistochemical staining of formalin fixed and paraffin embedded human tonsil tissue sections.

Submit a product review to Biocompare.com

Submit a review of this product to Biocompare.com to receive a \$20 Amazon.com giftcard! Your reviews help your fellow scientists make the right decisions. Thank you for your contribution.



Anti-Cytokeratin 5 Rabbit Monoclonal Antibody, Clone#RM226