

Anti-MUM1/IRF4 Rabbit Monoclonal Antibody, Clone#RM352

Catalog Number: M00401-1

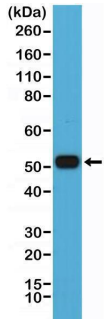
Overview

Product Name	Anti-MUM1/IRF4 Rabbit Monoclonal Antibody, Clone#RM352
Reactive Species	Human
Description	Boster Bio Anti-MUM1/IRF4 Rabbit Monoclonal Antibody, Clone#RM352 (Catalog # M00401-1). Tested in IHC, WB applications. This antibody reacts with Human.
Application	IHC, WB
Clonality	Monoclonal RM352
Formulation	50% Glycerol/PBS with 1% stabilizing protein and 0.09% sodium azide This antibody is supplied in a stabilized formulation. Compatibility with conjugation reactions depends on the chemistry of the conjugation method used. For conjugation methods that are not compatible with the stabilizing components present in this formulation, a carrier-free antibody format is required.
Storage Instructions	Store at -20°C for one year. Avoid repeated freeze-thaw cycles.
Host	Rabbit
Uniprot ID	Q15306

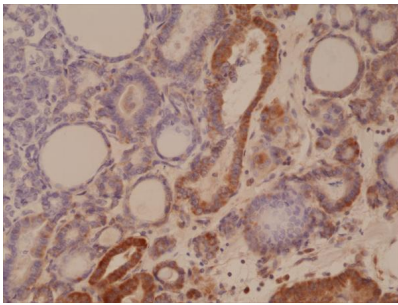
Technical Details

Immunogen	A peptide corresponding to the C-terminus of human MUM1/IRF4.
Cross Reactivity	This antibody reacts to human MUM1/IRF4 (Interferon regulatory factor 4).
Isotype	Rabbit IgG
Form	Liquid
Concentration	0.5-1mg/ml, actual concentration vary by lot. Use suggested dilution ratio to decide dilution procedure.
Purification	Protein A affinity purified from an animal origin-free culture supernatant
Suggested Dilutions	Immunohistochemistry (IHC): 1:200-1:800 dilution WB: 1:1000-1:2000 dilution.

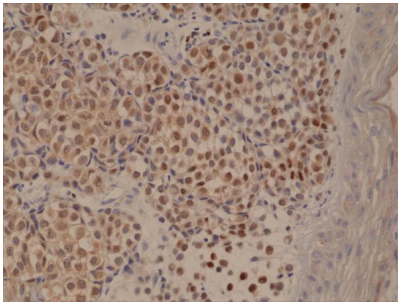
Anti-MUM1/IRF4 Rabbit Monoclonal Antibody, Clone#RM352 (M00401-1) Images



Western Blotting result Western Blot of Raji cell lysate using anti-MUM1/IRF4 rabbit monoclonal antibody (Clone RM352) at a 1:1000 dilution.



IHC result Immunohistochemical staining of formalin fixed and paraffin embedded human thyroid cancer tissue section using anti-MUM1/IRF4 rabbit monoclonal antibody (Clone RM352) at a 1:250 dilution.



IHC result Immunohistochemical staining of formalin fixed and paraffin embedded human melanoma tissue section using anti-MUM1/IRF4 rabbit monoclonal antibody (Clone RM352) at a 1:250 dilution.

Submit a product review to Biocompare.com

Submit a review of this product to Biocompare.com to receive a \$20 Amazon.com giftcard! Your reviews help your fellow scientists make the right decisions. Thank you for your contribution.



Anti-MUM1/IRF4 Rabbit Monoclonal Antibody, Clone#RM352

For Research Use Only. Not for use in diagnostic procedures.