

Anti-MLL KMT2A Monoclonal Antibody

Catalog Number: M00402

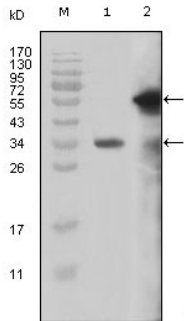
Overview

Product Name	Anti-MLL KMT2A Monoclonal Antibody
Reactive Species	Human
Description	Boster Bio Anti-MLL KMT2A Monoclonal Antibody catalog # M00402. Tested in ELISA, IHC, WB applications. This antibody reacts with Human.
Application	ELISA, IF, IHC, WB
Clonality	Monoclonal 10F8D7
Formulation	Ascitic fluid containing 0.03% sodium azide.
Storage Instructions	Store at -20°C for one year. For short term storage and frequent use, store at 4°C for up to one month. Avoid repeated freeze-thaw cycles.
Host	Mouse
Uniprot ID	Q03164

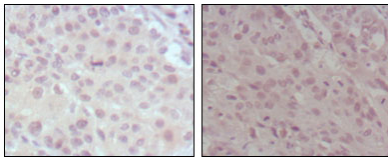
Technical Details

Immunogen	Purified recombinant fragment of MLL (aa3751-3968) expressed in E. Coli.
Isotype	IgG
Form	Liquid
Concentration	1 mg/ml
Purification	Affinity purification
Suggested Dilutions	WB 1:500-1:2000 IHC 1:200-1:1000 ELISA 1:10000 IF 1:50-200

Anti-MLL KMT2A Monoclonal Antibody (M00402) Images



Western blotting validation for Anti-MLL KMT2A Monoclonal Antibody M00402 Western Blot (WB) analysis using MLL Monoclonal Antibody against truncated MLL recombinant protein (1) and truncated GFP-MLL(aa3714-3969) transfected Cos7 cell lysate (2). Electrophoresis was performed on a SDS-PAGE gel. To determine SDS-PAGE gel concentration



Immunohistochemistry validation of KMT2A using Anti-MLL KMT2A Monoclonal Antibody (M00402). Immunohistochemistry (IHC) analysis of paraffin-embedded human lung cancer (left) and esophagus cancer (right)

Submit a product review to [Biocompare.com](https://www.biocompare.com)

Submit a review of this product to [Biocompare.com](https://www.biocompare.com) to receive a \$20 Amazon.com giftcard! Your reviews help your fellow scientists make the right decisions. Thank you for your contribution.



Anti-MLL KMT2A Monoclonal Antibody

For Research Use Only. Not for use in diagnostic procedures.