

Anti-SPR Mouse Monoclonal Antibody [Clone ID: OTI2C6]

Catalog Number: M00416

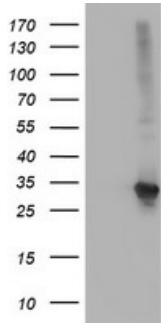
Overview

| | |
|----------------------|--|
| Product Name | Anti-SPR Mouse Monoclonal Antibody [Clone ID: OTI2C6] |
| Reactive Species | Human, Monkey |
| Description | Boster Bio SPR mouse monoclonal antibody, clone OTI2C6 (formerly 2C6). Catalog# M00416. Tested in FC, IF, IHC, WB. This antibody reacts with Human, Monkey. |
| Application | Flow Cytometry, IF, IHC, WB |
| Clonality | Monoclonal OTI2C6 |
| Formulation | PBS (pH 7.3) containing 1% stabilizing protein, 50% glycerol and 0.02% sodium azide. This antibody is supplied in a stabilized formulation. Compatibility with conjugation reactions depends on the chemistry of the conjugation method used. For conjugation methods that are not compatible with the stabilizing components present in this formulation, a carrier-free antibody format is required. |
| Storage Instructions | Store at -20°C as received. |
| Host | Mouse |
| Uniprot ID | P35270 |

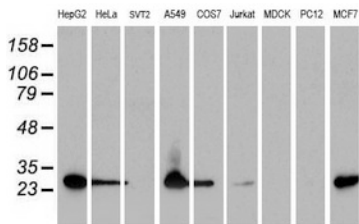
Technical Details

| | |
|---------------------|---|
| Immunogen | Full length human recombinant protein of human SPR (NP_003115) produced in HEK293T cell. |
| Isotype | IgG1 |
| Concentration | 0.93 mg/ml |
| Purification | Purified from mouse ascites fluids or tissue culture supernatant by affinity chromatography (protein A/G) |
| Suggested Dilutions | WB 1:500~2000 IHC 1:150 Flow Cytometry 1:100 IF: 1:100 |

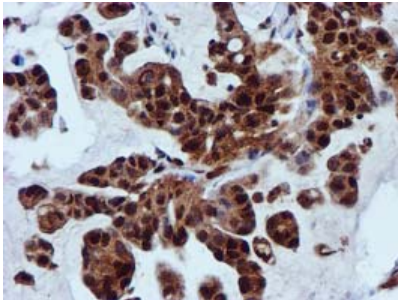
Anti-SPR Mouse Monoclonal Antibody [Clone ID: OTI2C6] (M00416) Images



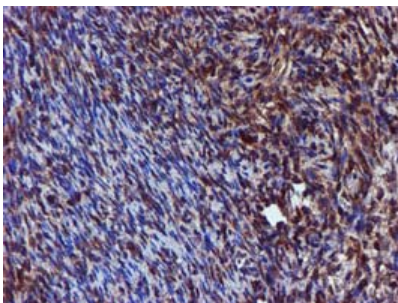
HEK293T cells were transfected with the pCMV6-ENTRY control (Left lane) or pCMV6-ENTRY SPR (Right lane) cDNA for 48 hrs and lysed. Equivalent amounts of cell lysates (5 ug per lane) were separated by SDS-PAGE and immunoblotted with anti-SPR.



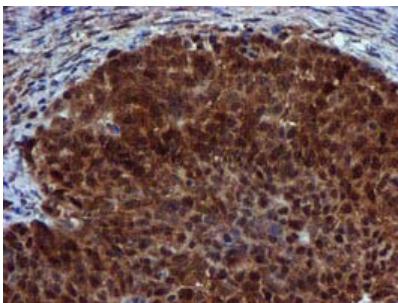
Western blot analysis of extracts (35ug) from 9 different cell lines by using anti-SPR monoclonal antibody.



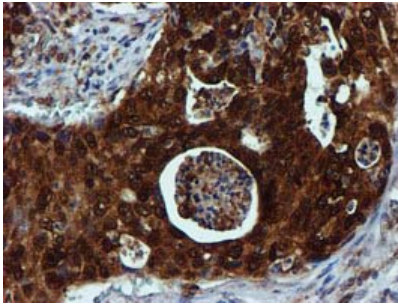
Immunohistochemical staining of paraffin-embedded Carcinoma of Human lung tissue using anti-SPR mouse monoclonal antibody. (Heat-induced epitope retrieval by 10mM citric buffer)



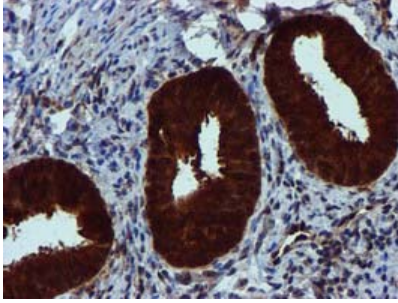
Immunohistochemical staining of paraffin-embedded Human Ovary tissue within the normal limits using anti-SPR mouse monoclonal antibody. (Heat-induced epitope retrieval by 10mM citric buffer)



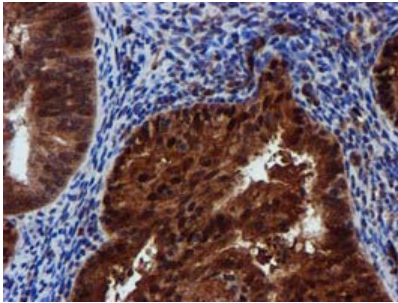
Immunohistochemical staining of paraffin-embedded Adenocarcinoma of Human ovary tissue using anti-SPR mouse monoclonal antibody. (Heat-induced epitope retrieval by 10mM citric buffer)



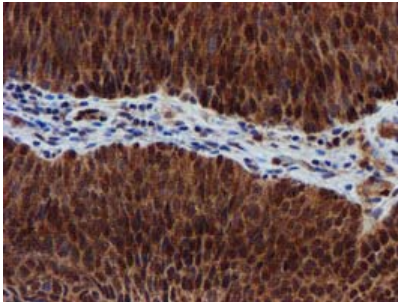
Immunohistochemical staining of paraffin-embedded Carcinoma of Human pancreas tissue using anti-SPR mouse monoclonal antibody. (Heat-induced epitope retrieval by 10mM citric buffer)



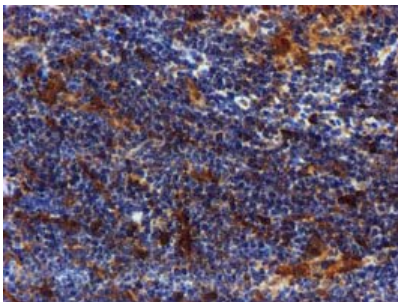
Immunohistochemical staining of paraffin-embedded Human endometrium tissue within the normal limits using anti-SPR mouse monoclonal antibody. (Heat-induced epitope retrieval by 10mM citric buffer)



Immunohistochemical staining of paraffin-embedded Adenocarcinoma of Human endometrium tissue using anti-SPR mouse monoclonal antibody. (Heat-induced epitope retrieval by 10mM citric buffer)

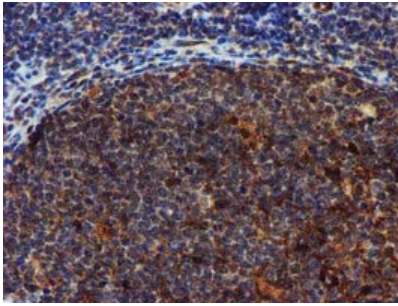


Immunohistochemical staining of paraffin-embedded Carcinoma of Human bladder tissue using anti-SPR mouse monoclonal antibody. (Heat-induced epitope retrieval by 10mM citric buffer)

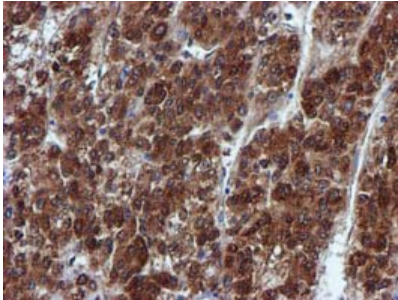


Immunohistochemical staining of paraffin-embedded Human lymphoma tissue using anti-SPR mouse monoclonal antibody. (Heat-induced epitope retrieval by 10mM citric buffer)

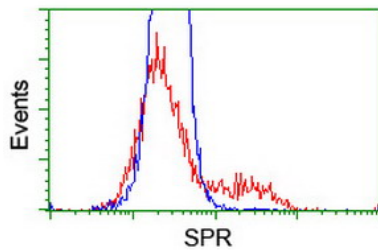
Immunohistochemical staining of paraffin-embedded Human tonsil within the normal limits using anti-SPR mouse



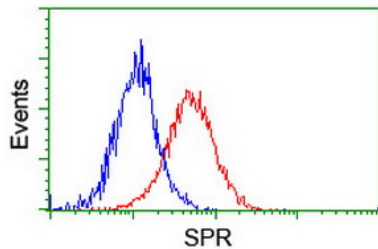
monoclonal antibody. (Heat-induced epitope retrieval by 10mM citric buffer)



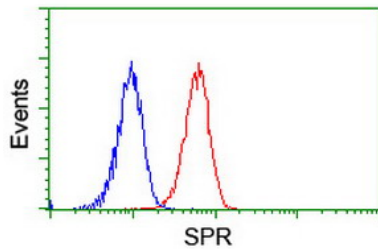
Immunohistochemical staining of paraffin-embedded Carcinoma of Human liver tissue using anti-SPR mouse monoclonal antibody. (Heat-induced epitope retrieval by 10mM citric buffer)



HEK293T cells transfected with either SPR (Myc-DDK-tagged) overexpress plasmid (Red) or empty vector control plasmid (Blue) were immunostained by anti-SPR antibody (M00416)

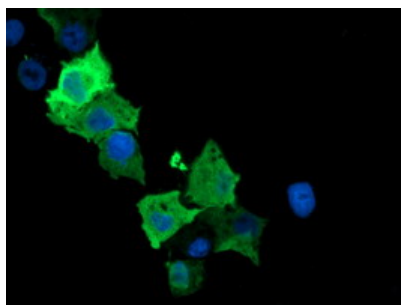


Flow cytometric Analysis of HeLa cells



Flow cytometric Analysis of Jurkat cells

Anti-SPR mouse monoclonal antibody (M00416) immunofluorescent staining of COS7 cells transiently transfected by pCMV6-ENTRY SPR.



Submit a product review to Biocompare.com

Submit a review of this product to Biocompare.com to receive a \$20 Amazon.com giftcard! Your reviews help your fellow scientists make the right decisions. Thank you for your contribution.



Anti-SPR Mouse Monoclonal Antibody [Clone ID: OTI2C6]

For Research Use Only. Not for use in diagnostic procedures.