

Anti-ID2 Mouse Monoclonal Antibody [Clone ID: OTI10C3]

Catalog Number: M00417

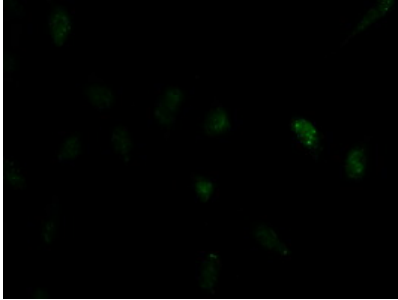
Overview

Product Name	Anti-ID2 Mouse Monoclonal Antibody [Clone ID: OTI10C3]
Reactive Species	Human, Mouse, Rat
Description	Boster Bio ID2 mouse monoclonal antibody, clone OTI10C3 (formerly 10C3). Catalog# M00417. Tested in IF, IHC, WB. This antibody reacts with Human, Mouse, Rat.
Conjugate	Unconjugated
Application	IF, IHC, WB
Clonality	Monoclonal OTI10C3
Formulation	PBS (pH 7.3) containing 1% stabilizing protein, 50% glycerol and 0.02% sodium azide. This antibody is supplied in a stabilized formulation. Compatibility with conjugation reactions depends on the chemistry of the conjugation method used. For conjugation methods that are not compatible with the stabilizing components present in this formulation, a carrier-free antibody format is required.
Storage Instructions	Store at -20°C for one year. For short term storage and frequent use, store at 4°C for up to one month. Avoid repeated freeze-thaw cycles.
Host	Mouse
Uniprot ID	Q02363

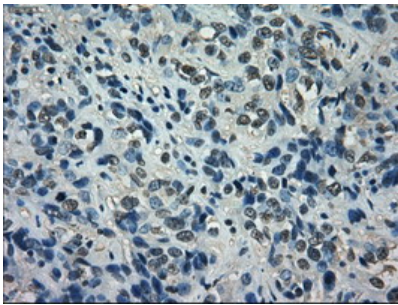
Technical Details

Immunogen	Full length human recombinant protein of human ID2 (NP_002157) produced in E.coli.
Isotype	IgG2b
Concentration	1 mg/ml
Purification	Purified from mouse ascites fluids or tissue culture supernatant by affinity chromatography (protein A/G)
Suggested Dilutions	WB 1:500 IHC 1:50 IF 1:50

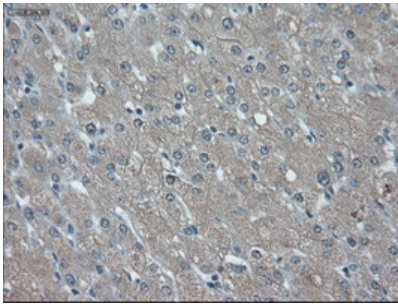
Anti-ID2 Mouse Monoclonal Antibody [Clone ID: OTI10C3] (M00417) Images



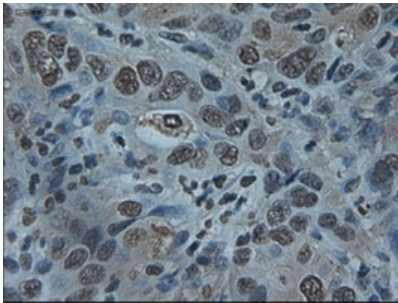
Immunofluorescent staining of HeLa cells using anti-ID2 mouse monoclonal antibody (M00417).



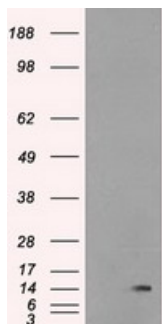
Immunohistochemical staining of paraffin-embedded Carcinoma of Human bladder tissue using anti-ID2 mouse monoclonal antibody. (Heat-induced epitope retrieval by 10mM citric buffer)



Immunohistochemical staining of paraffin-embedded Human liver tissue within the normal limits using anti-ID2 mouse monoclonal antibody. (Heat-induced epitope retrieval by 10mM citric buffer)



Immunohistochemical staining of paraffin-embedded Carcinoma of Human liver tissue using anti-ID2 mouse monoclonal antibody. (Heat-induced epitope retrieval by 10mM citric buffer)



HEK293T cells were transfected with the pCMV6-ENTRY control (Left lane) or pCMV6-ENTRY ID2 (Right lane) cDNA for 48 hrs and lysed. Equivalent amounts of cell lysates (5 ug per lane) were separated by SDS-PAGE and immunoblotted with anti-ID2.

Submit a product review to Biocompare.com

Submit a review of this product to Biocompare.com to receive a \$20 Amazon.com giftcard! Your reviews help your fellow scientists make the right decisions. Thank you for your contribution.



Anti-ID2 Mouse Monoclonal Antibody [Clone ID: OTI10C3]

For Research Use Only. Not for use in diagnostic procedures.