

## Anti-MMP13 Mouse Monoclonal Antibody [Clone ID: OTI2D8]

Catalog Number: M00420-1

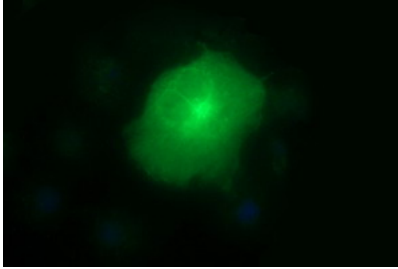
### Overview

Product Name	Anti-MMP13 Mouse Monoclonal Antibody [Clone ID: OTI2D8]
Reactive Species	Human, Mouse, Rat
Description	Boster Bio MMP13 mouse monoclonal antibody, clone OTI2D8 (formerly 2D8). Catalog# M00420-1. Tested in IF, IHC, WB. This antibody reacts with Human, Mouse, Rat.
Conjugate	Unconjugated
Application	IF, IHC, WB
Clonality	Monoclonal OTI2D8
Formulation	PBS (pH 7.3) containing 1% stabilizing protein, 50% glycerol and 0.02% sodium azide. This antibody is supplied in a stabilized formulation. Compatibility with conjugation reactions depends on the chemistry of the conjugation method used. For conjugation methods that are not compatible with the stabilizing components present in this formulation, a carrier-free antibody format is required.
Storage Instructions	Store at -20°C for one year. For short term storage and frequent use, store at 4°C for up to one month. Avoid repeated freeze-thaw cycles.
Host	Mouse
Uniprot ID	P45452

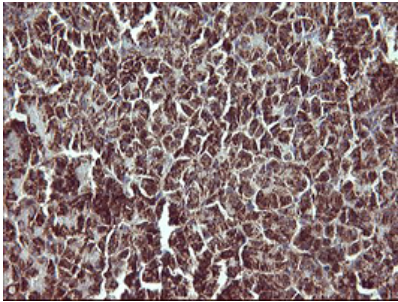
### Technical Details

Immunogen	Human recombinant protein fragment corresponding to amino acids 104-471 of human MMP13 (NP_002418) produced in HEK293T cell.
Isotype	IgG2a
Concentration	1 mg/ml
Purification	Purified from mouse ascites fluids or tissue culture supernatant by affinity chromatography (protein A/G)
Suggested Dilutions	WB 1:4000 IHC 1:150 IF 1:100

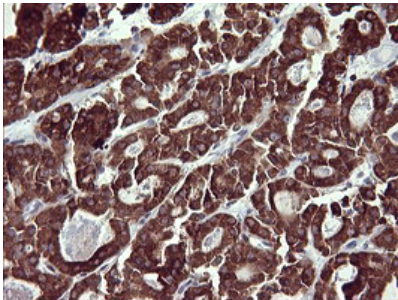
## Anti-MMP13 Mouse Monoclonal Antibody [Clone ID: OTI2D8] (M00420-1) Images



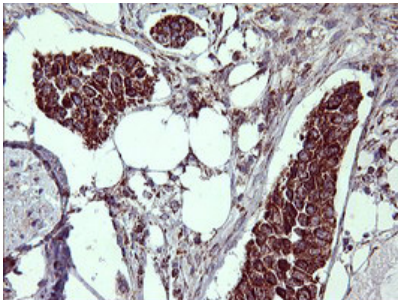
Anti-MMP13 mouse monoclonal antibody (M00420-1) immunofluorescent staining of COS7 cells transiently transfected by pCMV6-ENTRY MMP13.



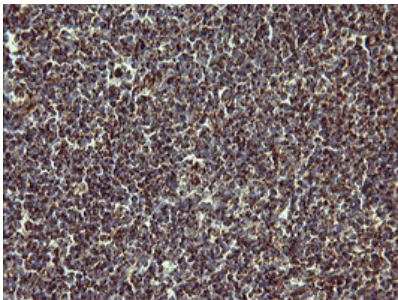
Immunohistochemical staining of paraffin-embedded Human pancreas tissue within the normal limits using anti-MMP13 mouse monoclonal antibody. (Heat-induced epitope retrieval by 10mM citric buffer)



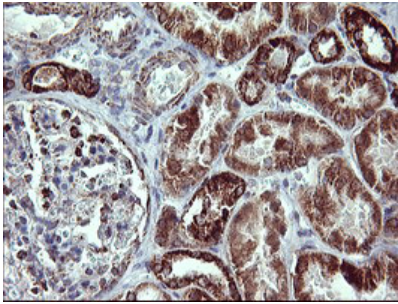
Immunohistochemical staining of paraffin-embedded Carcinoma of Human thyroid tissue using anti-MMP13 mouse monoclonal antibody. (Heat-induced epitope retrieval by 10mM citric buffer)



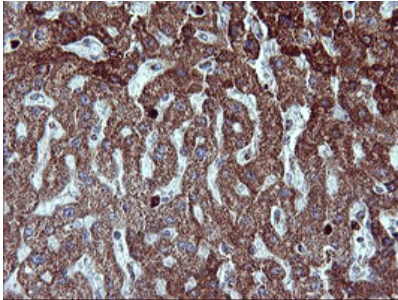
Immunohistochemical staining of paraffin-embedded Carcinoma of Human bladder tissue using anti-MMP13 mouse monoclonal antibody. (Heat-induced epitope retrieval by 10mM citric buffer)



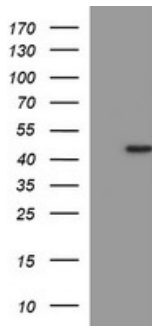
Immunohistochemical staining of paraffin-embedded Human lymph node tissue within the normal limits using anti-MMP13 mouse monoclonal antibody. (Heat-induced epitope retrieval by 10mM citric buffer)



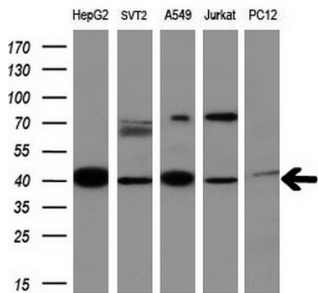
Immunohistochemical staining of paraffin-embedded Human Kidney tissue within the normal limits using anti-MMP13 mouse monoclonal antibody. (Heat-induced epitope retrieval by 10mM citric buffer)



Immunohistochemical staining of paraffin-embedded Human liver tissue within the normal limits using anti-MMP13 mouse monoclonal antibody. (Heat-induced epitope retrieval by 10mM citric buffer)



HEK293T cells were transfected with the pCMV6-ENTRY control (Left lane) or pCMV6-ENTRY MMP13 (Right lane) cDNA for 48 hrs and lysed. Equivalent amounts of cell lysates (5 ug per lane) were separated by SDS-PAGE and immunoblotted with anti-MMP13.



Western blot analysis of extracts (10ug) from 5 different cell lines by using anti-MMP13 monoclonal antibody at 1:200 dilution.

## Submit a product review to Biocompare.com

Submit a review of this product to Biocompare.com to receive a \$20 Amazon.com giftcard! Your reviews help your fellow scientists make the right decisions. Thank you for your contribution.



Anti-MMP13 Mouse Monoclonal Antibody [Clone ID: OTI2D8]

For Research Use Only. Not for use in diagnostic procedures.