

Anti-Topoisomerase I (TOP1) Mouse Monoclonal Antibody [Clone ID: OTI3B9]

Catalog Number: M00434-1

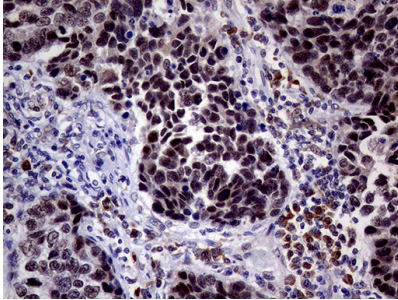
Overview

| | |
|----------------------|--|
| Product Name | Anti-Topoisomerase I (TOP1) Mouse Monoclonal Antibody [Clone ID: OTI3B9] |
| Reactive Species | Human, Mouse, Rat |
| Description | Boster Bio TOP1 mouse monoclonal antibody, clone OTI3B9. Catalog# M00434-1. Tested in IHC, WB. This antibody reacts with Human, Mouse, Rat. |
| Conjugate | Unconjugated |
| Application | IHC, WB |
| Clonality | Monoclonal OTI3B9 |
| Formulation | PBS (pH 7.3) containing 1% stabilizing protein, 50% glycerol and 0.02% sodium azide. This antibody is supplied in a stabilized formulation. Compatibility with conjugation reactions depends on the chemistry of the conjugation method used. For conjugation methods that are not compatible with the stabilizing components present in this formulation, a carrier-free antibody format is required. |
| Storage Instructions | Store at -20°C for one year. For short term storage and frequent use, store at 4°C for up to one month. Avoid repeated freeze-thaw cycles. |
| Host | Mouse |
| Uniprot ID | P11387 |

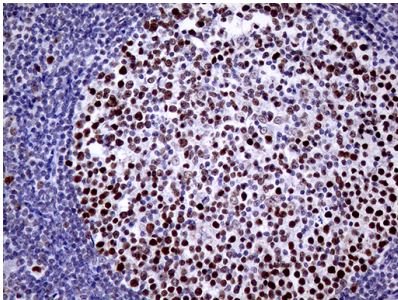
Technical Details

| | |
|---------------------|--|
| Immunogen | Human recombinant protein fragment corresponding to amino acids 93-151 of human TOP1 (NP_003277) produced in E.coli. |
| Isotype | IgG1 |
| Concentration | 1 mg/ml |
| Purification | Purified from mouse ascites fluids or tissue culture supernatant by affinity chromatography (protein A/G) |
| Suggested Dilutions | WB 1:500~2000 IHC 1:500 |

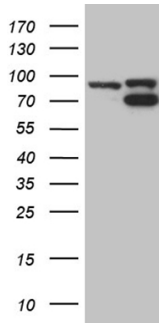
Anti-Topoisomerase I (TOP1) Mouse Monoclonal Antibody [Clone ID: OTI3B9] (M00434-1) Images



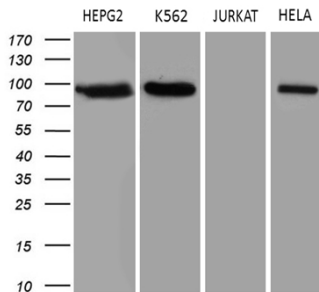
Immunohistochemical staining of paraffin-embedded Carcinoma of Human lung tissue using anti-TOP1 mouse monoclonal antibody. (Heat-induced epitope retrieval by 1mM EDTA in 10mM Tris buffer (pH8.5) at 120°C for 3min)



Immunohistochemical staining of paraffin-embedded Human lymph node tissue within the normal limits using anti-TOP1 mouse monoclonal antibody. (Heat-induced epitope retrieval by 1mM EDTA in 10mM Tris buffer (pH8.5) at 120°C for 3min)



HEK293T cells were transfected with the pCMV6-ENTRY control (Left lane) or pCMV6-ENTRY TOP1 (Right lane) cDNA for 48 hrs and lysed. Equivalent amounts of cell lysates (5 ug per lane) were separated by SDS-PAGE and immunoblotted with anti-TOP1 (1:2000).



Western blot analysis of extracts (35ug) from 4 different cell lines by using anti-TOP1 monoclonal antibody (1:500).

Submit a product review to [Biocompare.com](https://www.biocompare.com)

Submit a review of this product to [Biocompare.com](https://www.biocompare.com) to receive a \$20 Amazon.com giftcard! Your reviews help your fellow scientists make the right decisions. Thank you for your contribution.



Anti-Topoisomerase I (TOP1) Mouse Monoclonal Antibody [Clone ID: OT13B9]

For Research Use Only. Not for use in diagnostic procedures.