

## Anti-PTCH1 Mouse Monoclonal Antibody [Clone ID: OTI5C7]

Catalog Number: M00441

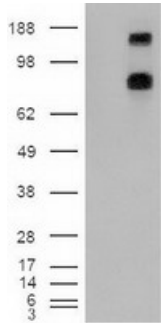
### Overview

Product Name	Anti-PTCH1 Mouse Monoclonal Antibody [Clone ID: OTI5C7]
Reactive Species	Human, Mouse, Rat
Description	Boster Bio Patched1 (Patched) mouse monoclonal antibody, clone OTI5C7 (formerly 5C7). Catalog# M00441. Tested in IF, IHC, WB. This antibody reacts with Human, Mouse, Rat.
Application	IF, IHC, WB
Clonality	Monoclonal OTI5C7
Formulation	PBS (pH 7.3) containing 1% stabilizing protein, 50% glycerol and 0.02% sodium azide. This antibody is supplied in a stabilized formulation. Compatibility with conjugation reactions depends on the chemistry of the conjugation method used. For conjugation methods that are not compatible with the stabilizing components present in this formulation, a carrier-free antibody format is required.
Storage Instructions	Store at -20°C as received.
Host	Mouse
Uniprot ID	Q13635

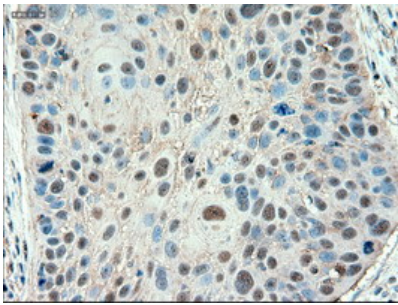
### Technical Details

Immunogen	Human recombinant protein fragment corresponding to amino acids 122-436 of human PTCH1 (NP_000255) produced in E.coli.
Isotype	IgG2b
Concentration	0.2 mg/ml
Purification	Purified from mouse ascites fluids or tissue culture supernatant by affinity chromatography (protein A/G)
Suggested Dilutions	WB 1:500 IHC 1:50 IF 1:100

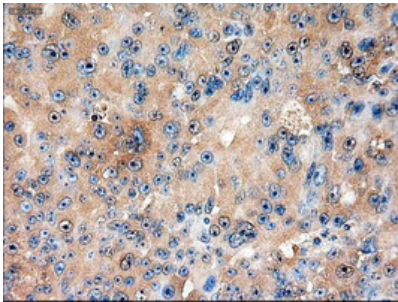
## Anti-PTCH1 Mouse Monoclonal Antibody [Clone ID: OTI5C7] (M00441) Images



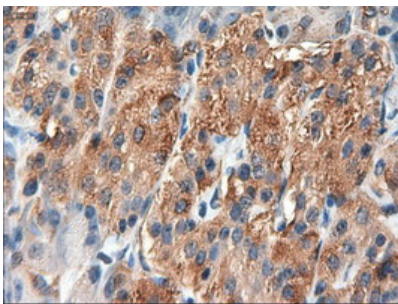
HEK293T cells were transfected with the pCMV6-ENTRY control (Left lane) or pCMV6-ENTRY PTCH1 (Right lane) cDNA for 48 hrs and lysed. Equivalent amounts of cell lysates (5 ug per lane) were separated by SDS-PAGE and immunoblotted with anti-PTCH1.



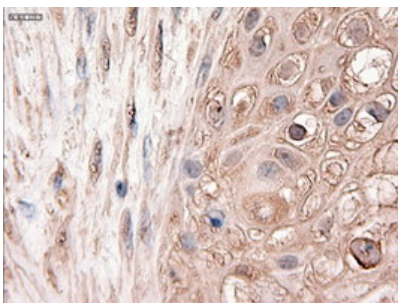
Immunohistochemical staining of paraffin-embedded Carcinoma of Human lung tissue using anti-PTCH1 mouse monoclonal antibody. (Heat-induced epitope retrieval by 10mM citric buffer)



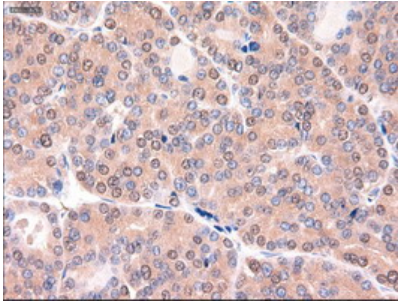
Immunohistochemical staining of paraffin-embedded Adenocarcinoma of Human ovary tissue using anti-PTCH1 mouse monoclonal antibody. (Heat-induced epitope retrieval by 10mM citric buffer)



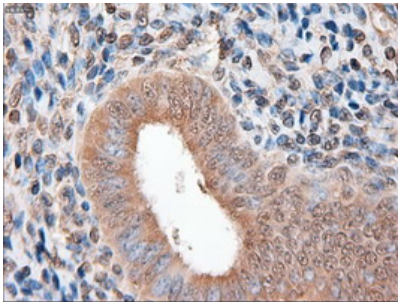
Immunohistochemical staining of paraffin-embedded Human pancreas tissue within the normal limits using anti-PTCH1 mouse monoclonal antibody. (Heat-induced epitope retrieval by 10mM citric buffer)



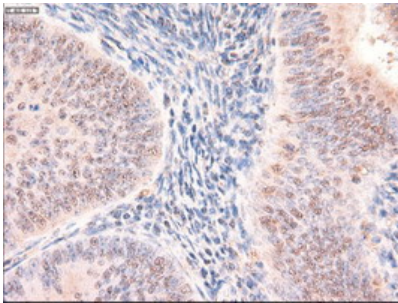
Immunohistochemical staining of paraffin-embedded Carcinoma of Human pancreas tissue using anti-PTCH1 mouse monoclonal antibody. (Heat-induced epitope retrieval by 10mM citric buffer)



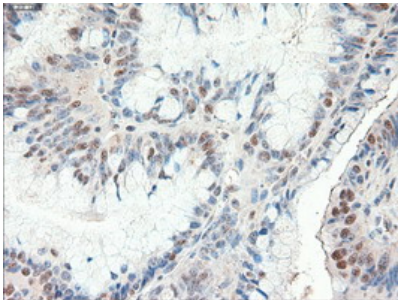
Immunohistochemical staining of paraffin-embedded Carcinoma of Human thyroid tissue using anti-PTCH1 mouse monoclonal antibody. (Heat-induced epitope retrieval by 10mM citric buffer)



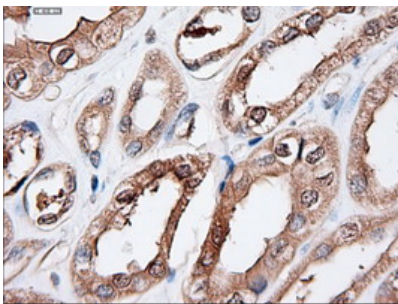
Immunohistochemical staining of paraffin-embedded Human endometrium tissue within the normal limits using anti-PTCH1 mouse monoclonal antibody. (Heat-induced epitope retrieval by 10mM citric buffer)



Immunohistochemical staining of paraffin-embedded Adenocarcinoma of Human endometrium tissue using anti-PTCH1 mouse monoclonal antibody. (Heat-induced epitope retrieval by 10mM citric buffer)

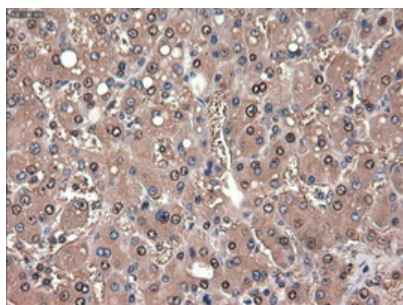


Immunohistochemical staining of paraffin-embedded Adenocarcinoma of Human colon tissue using anti-PTCH1 mouse monoclonal antibody. (Heat-induced epitope retrieval by 10mM citric buffer)

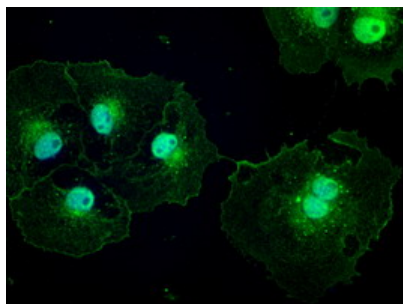


Immunohistochemical staining of paraffin-embedded Human Kidney tissue within the normal limits using anti-PTCH1 mouse monoclonal antibody. (Heat-induced epitope retrieval by 10mM citric buffer)

Immunohistochemical staining of paraffin-embedded Carcinoma of Human liver tissue using anti-PTCH1 mouse



monoclonal antibody. (Heat-induced epitope retrieval by 10mM citric buffer)



Anti-PTCH1 mouse monoclonal antibody (M00441) immunofluorescent staining of COS7 cells transiently transfected by pCMV6-ENTRY PTCH1.

## Submit a product review to [Biocompare.com](https://www.biocompare.com)

Submit a review of this product to [Biocompare.com](https://www.biocompare.com) to receive a \$20 Amazon.com giftcard! Your reviews help your fellow scientists make the right decisions. Thank you for your contribution.



Anti-PTCH1 Mouse Monoclonal Antibody [Clone ID: OTI5C7]

For Research Use Only. Not for use in diagnostic procedures.