

Anti-Raf1 Rabbit Monoclonal Antibody

Catalog Number: M00446

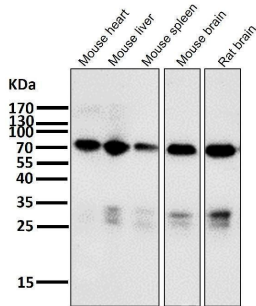
Overview

Product Name	Anti-Raf1 Rabbit Monoclonal Antibody
Reactive Species	Human
Description	Boster Bio Anti-Raf1 Rabbit Monoclonal Antibody catalog # M00446. Tested in WB, ICC/IF applications. This antibody reacts with Human.
Application	IF, ICC, WB
Clonality	Monoclonal IAG-18
Formulation	Rabbit IgG in stabilizing components, phosphate buffered saline, pH 7.4, 150mM NaCl, 0.02% sodium azide and 50% glycerol. *This antibody is supplied in a stabilized formulation. Compatibility with conjugation reactions depends on the chemistry of the conjugation method used. For conjugation methods that are not compatible with the stabilizing components present in this formulation, a carrier-free antibody format is required.
Storage Instructions	Store at -20°C for one year. For short term storage and frequent use, store at 4°C for up to one month. Avoid repeated freeze-thaw cycles.
Host	Rabbit
Uniprot ID	P04049

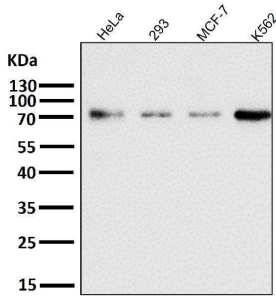
Technical Details

Immunogen	A synthesized peptide derived from human Raf1
Isotype	Rabbit IgG
Form	Liquid
Concentration	0.5mg/ml
Purification	Affinity-chromatography
Suggested Dilutions	WB 1:500-1:5000 ICC/IF 1:50-1:200

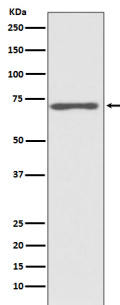
Anti-Raf1 Rabbit Monoclonal Antibody (M00446) Images



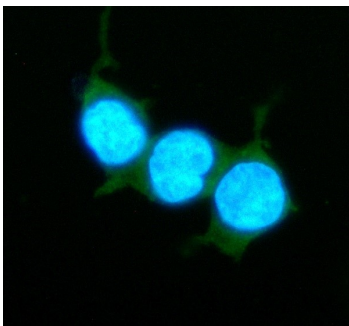
All lanes use the Antibody at 1:1K dilution for 1 hour at room temperature.



All lanes use the Antibody at 1:1K dilution for 1 hour at room temperature.



Western blot analysis of Raf1 expression in HeLa cell lysate.



ICC/IF analysis of Raf1 using anti-Raf1 antibody (M00446). Raf1 was detected in an immunocytochemical section of human HEK293T cells. The cells were fixed with 4% paraformaldehyde for 10 minutes and then treated with a membrane permeabilization agent (AR0205) for 5 minutes. The cells were blocked with 10% goat serum. And then incubated with rabbit anti-Raf1 Antibody (M00446) at a dilution of 1:50 overnight at 4°C. DyLight®488 Conjugated Goat Anti-Rabbit IgG (BA1127) was used as secondary antibody at 1:500 dilution and incubated for 30 minutes at 37°C. The section was counterstained with DAPI. Visualize using a fluorescence microscope and filter sets appropriate for the label used.

Submit a product review to [Biocompare.com](https://www.biocompare.com)

Submit a review of this product to [Biocompare.com](https://www.biocompare.com) to receive a \$20 Amazon.com giftcard! Your



reviews help your fellow scientists make the right decisions. Thank you for your contribution.

Anti-Raf1 Rabbit Monoclonal Antibody

For Research Use Only. Not for use in diagnostic procedures.