

Anti-Skp1 Monoclonal Antibody

Catalog Number: M00476

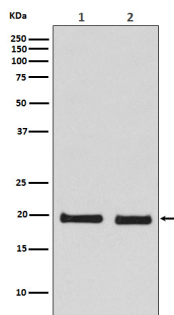
Overview

Product Name	Anti-Skp1 Monoclonal Antibody
Reactive Species	Human, Mouse, Rat
Description	Boster Bio Anti-Skp1 Monoclonal Antibody catalog # M00476. Tested in WB, ICC/IF, Flow Cytometry applications. This antibody reacts with Human, Mouse, Rat.
Application	Flow Cytometry, IF, ICC, WB
Clonality	Monoclonal ADDF-19
Formulation	Rabbit IgG in stabilizing components, phosphate buffered saline, pH 7.4, 150mM NaCl, 0.02% sodium azide and 50% glycerol. *This antibody is supplied in a stabilized formulation. Compatibility with conjugation reactions depends on the chemistry of the conjugation method used. For conjugation methods that are not compatible with the stabilizing components present in this formulation, a carrier-free antibody format is required.
Storage Instructions	Store at -20°C for one year. For short term storage and frequent use, store at 4°C for up to one month. Avoid repeated freeze-thaw cycles.
Host	Rabbit
Uniprot ID	P63208

Technical Details

Immunogen	A synthesized peptide derived from human Skp1 Essential component of the SCF (SKP1-CUL1-F-box protein) ubiquitin ligase complex, which mediates the ubiquitination of proteins involved in cell cycle progression, signal transduction and transcription.
Isotype	Rabbit IgG
Form	Liquid
Concentration	0.5mg/ml
Purification	Affinity-chromatography
Suggested Dilutions	WB 1:500-1:2000 ICC/IF 1:50-1:200 FC 1:100

Anti-Skp1 Monoclonal Antibody (M00476) Images



Western blot analysis of Skp1 expression in (1) 293T cell lysate; (2) NIH/3T3 cell lysate.

Submit a product review to Biocompare.com

Submit a review of this product to Biocompare.com to receive a \$20 Amazon.com giftcard! Your reviews help your fellow scientists make the right decisions. Thank you for your contribution.



Anti-Skp1 Monoclonal Antibody

For Research Use Only. Not for use in diagnostic procedures.