

Anti-Leptin Monoclonal Antibody

Catalog Number: M00479

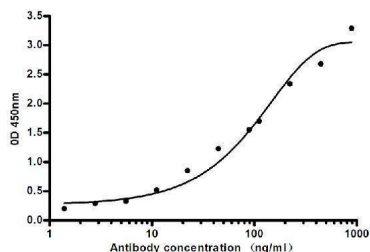
Overview

Product Name	Anti-Leptin Monoclonal Antibody
Reactive Species	Human
Description	Boster Bio Anti-Leptin Monoclonal Antibody catalog # M00479. Tested in ELISA, WB applications. This antibody reacts with Human.
Application	ELISA
Clonality	Monoclonal 5C11-G6-B12
Formulation	Liquid in PBS containing 50% glycerol, 0.5% stabilizing protein and 0.02% sodium azide. This antibody is supplied in a stabilized formulation. Compatibility with conjugation reactions depends on the chemistry of the conjugation method used. For conjugation methods that are not compatible with the stabilizing components present in this formulation, a carrier-free antibody format is required.
Storage Instructions	Store at -20°C for one year. For short term storage and frequent use, store at 4°C for up to one month. Avoid repeated freeze-thaw cycles.
Host	Mouse
Uniprot ID	P41159

Technical Details

Immunogen	Purified recombinant full length of human Leptin protein expressed in E.coli.
Isotype	IgG
Form	Liquid
Concentration	1 mg/ml
Purification	The antibody was affinity-purified from rabbit antiserum by affinity-chromatography using epitope-specific immunogen.
Suggested Dilutions	ELISA 1:10000-20000

Anti-Leptin Monoclonal Antibody (M00479) Images



ELISA validation of LEP using Anti-Leptin Monoclonal Antibody (M00479). Indirect ELISA assay for anti-Leptin mouse mAb. Antigen coating concentration: 4ug/ml.

Submit a product review to Biocompare.com

Submit a review of this product to Biocompare.com to receive a \$20 Amazon.com giftcard! Your reviews help your fellow scientists make the right decisions. Thank you for your contribution.



Anti-Leptin Monoclonal Antibody

For Research Use Only. Not for use in diagnostic procedures.