

## Anti-Cytochrome P450 2D6 CYP2D6 Monoclonal Antibody

Catalog Number: M00498

### Overview

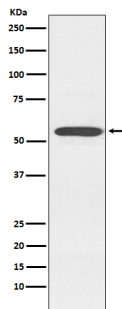
Product Name	Anti-Cytochrome P450 2D6 CYP2D6 Monoclonal Antibody
Reactive Species	Human
Description	Boster Bio Anti-Cytochrome P450 2D6 CYP2D6 Monoclonal Antibody catalog # M00498. Tested in WB, IHC, ICC/IF, Flow Cytometry applications. This antibody reacts with Human.
Application	Flow Cytometry, IF, IHC, ICC, WB
Clonality	Monoclonal ADBO-3
Formulation	Rabbit IgG in stabilizing components, phosphate buffered saline, pH 7.4, 150mM NaCl, 0.02% sodium azide and 50% glycerol. *This antibody is supplied in a stabilized formulation. Compatibility with conjugation reactions depends on the chemistry of the conjugation method used. For conjugation methods that are not compatible with the stabilizing components present in this formulation, a carrier-free antibody format is required.
Storage Instructions	Store at -20°C for one year. For short term storage and frequent use, store at 4°C for up to one month. Avoid repeated freeze-thaw cycles.
Host	Rabbit
Uniprot ID	P10635

### Technical Details

Immunogen	A synthesized peptide derived from human Cytochrome P450 2D6. Cytochrome P450 2D6 is a member of the cytochrome P450 superfamily of enzymes. The cytochrome P450 proteins are monooxygenases which catalyze many reactions involved in drug metabolism and synthesis of cholesterol, steroids and other lipids.
Isotype	Rabbit IgG
Form	Liquid
Concentration	0.5mg/ml
Purification	Affinity-chromatography
Suggested Dilutions	WB 1:500-2000 IHC 1:50-200 ICC/IF 1:50-200 FC 1:20



## Anti-Cytochrome P450 2D6 CYP2D6 Monoclonal Antibody (M00498) Images



Western blot analysis of Cytochrome P450 2D6 expression in K562 cell lysate.

### Submit a product review to Biocompare.com

Submit a review of this product to Biocompare.com to receive a \$20 Amazon.com giftcard! Your reviews help your fellow scientists make the right decisions. Thank you for your contribution.



Anti-Cytochrome P450 2D6 CYP2D6 Monoclonal Antibody  
For Research Use Only. Not for use in diagnostic procedures.