

Anti-PON1 Antibody (monoclonal, 11H2)

Catalog Number: M00516-2

About Pon1

Isocitrate dehydrogenase [NADP], mitochondrial isoenzyme that in humans is encoded by the *IDH2* gene. Isocitrate dehydrogenases catalyze the oxidative decarboxylation of isocitrate to 2-oxoglutarate. These enzymes belong to two distinct subclasses, one of which utilizes NAD (+) as the electron acceptor and the other NADP (+). Five isocitrate dehydrogenases have been reported: three NAD (+)-dependent isocitrate dehydrogenases, which localize to the mitochondrial matrix, and two NADP (+)-dependent isocitrate dehydrogenases, one of which is mitochondrial and the other predominantly cytosolic. Each NADP (+)-dependent isozyme is a homodimer. The protein encoded by this gene is the NADP (+)-dependent isocitrate dehydrogenase found in the mitochondria. It plays a role in intermediary metabolism and energy production. This protein may tightly associate or interact with the pyruvate dehydrogenase complex. Alternative splicing results in multiple transcript variants.

Overview

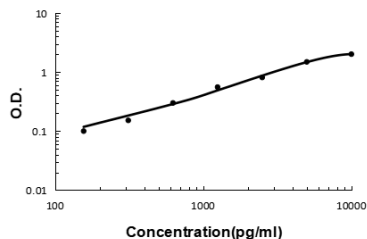
| | |
|----------------------|---|
| Product Name | Anti-PON1 Antibody (monoclonal, 11H2) |
| Reactive Species | Mouse, Rat |
| Description | Boster Bio Anti-PON1 Antibody (monoclonal, 11H2) catalog # M00516-2. Tested in ELISA applications. This antibody reacts with Mouse, Rat. |
| Application | ELISA (Cap) |
| Clonality | Monoclonal 11H2 |
| Formulation | Each vial contains 4mg Trehalose, 0.9mg NaCl, 0.2mg Na ₂ HPO ₄ , 0.05mg Na ₃ N. |
| Storage Instructions | Store at -20°C for one year from date of receipt. After reconstitution, at 4°C for one month. It can also be aliquotted and stored frozen at -20°C for six months. Avoid repeated freeze-thaw cycles. |
| Host | Mouse |
| Uniprot ID | P52430 |

Technical Details

| | |
|-------------------------------|---|
| Immunogen | E. coli-derived mouse PON1 recombinant protein (Position: A30-D274). |
| Recommended Detection Systems | Boster provides a series of assays reacted with primary antibodies. |
| Cross Reactivity | No cross-reactivity with other proteins. |
| Isotype | Mouse IgG2a |
| Form | Lyophilized |
| Concentration | Adding 0.2 ml of distilled water will yield a concentration of 500 ug/ml. |

| | |
|---------------------|------------------------------|
| Purification | Immunogen affinity purified. |
| Suggested Dilutions | ELISA (Cap), 1-5ug/ml |

Anti-PON1 Antibody (monoclonal, 11H2) (M00516-2) Images



Sandwich ELISA - Recombinant mouse PON1 protein standard curve. Use in combination with reagents from Mouse PON1 ELISA Kit EZ-Set (DIY Antibody Pairs) (EZ1621).

Submit a product review to Biocompare.com

Submit a review of this product to Biocompare.com to receive a \$20 Amazon.com giftcard! Your reviews help your fellow scientists make the right decisions. Thank you for your contribution.



Anti-PON1 Antibody (monoclonal, 11H2)

For Research Use Only. Not for use in diagnostic procedures.