

Anti-PON1 Mouse Monoclonal Antibody [Clone ID: OTI2D4]

Catalog Number: M00516-5

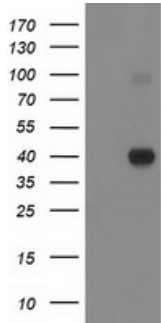
Overview

Product Name	Anti-PON1 Mouse Monoclonal Antibody [Clone ID: OTI2D4]
Reactive Species	Human
Description	Boster Bio PON1 mouse monoclonal antibody, clone OTI2D4 (formerly 2D4). Catalog# M00516-5. Tested in ELISA, FC, IF, IHC, WB. This antibody reacts with Human.
Application	ELISA, Flow Cytometry, IF, IHC, WB
Clonality	Monoclonal OTI2D4
Formulation	PBS (pH 7.3) containing 1% stabilizing protein, 50% glycerol and 0.02% sodium azide. This antibody is supplied in a stabilized formulation. Compatibility with conjugation reactions depends on the chemistry of the conjugation method used. For conjugation methods that are not compatible with the stabilizing components present in this formulation, a carrier-free antibody format is required.
Storage Instructions	Store at -20°C as received.
Host	Mouse
Uniprot ID	P27169

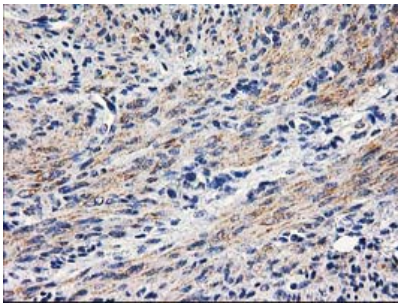
Technical Details

Immunogen	Full length human recombinant protein of human PON1 (NP_000437) produced in HEK293T cell.
Isotype	IgG2b
Concentration	0.97 mg/ml
Purification	Purified from mouse ascites fluids or tissue culture supernatant by affinity chromatography (protein A/G)
Suggested Dilutions	WB: 1:2000 IHC: 1:150 IF: 1:100 Flow cytometry: 1:100

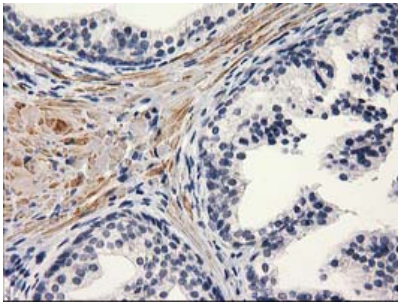
Anti-PON1 Mouse Monoclonal Antibody [Clone ID: OTI2D4] (M00516-5) Images



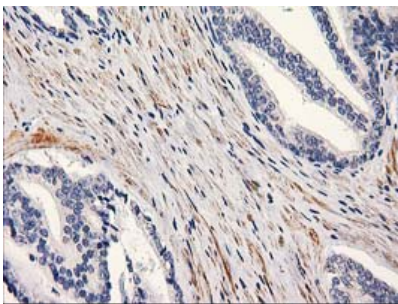
HEK293T cells were transfected with the pCMV6-ENTRY control (Left lane) or pCMV6-ENTRY PON1 (Right lane) cDNA for 48 hrs and lysed. Equivalent amounts of cell lysates (5 ug per lane) were separated by SDS-PAGE and immunoblotted with anti-PON1.



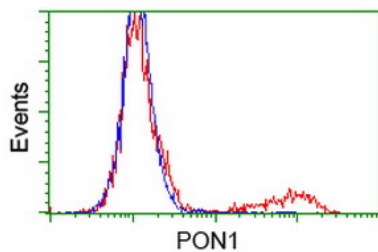
Immunohistochemical staining of paraffin-embedded Human endometrium tissue within the normal limits using anti-PON1 mouse monoclonal antibody. (Heat-induced epitope retrieval by 10mM citric buffer)



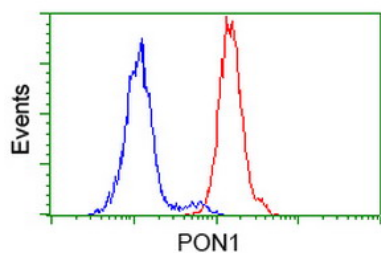
Immunohistochemical staining of paraffin-embedded Human prostate tissue within the normal limits using anti-PON1 mouse monoclonal antibody. (Heat-induced epitope retrieval by 10mM citric buffer)



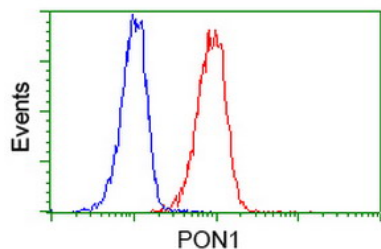
Immunohistochemical staining of paraffin-embedded Carcinoma of Human prostate tissue using anti-PON1 mouse monoclonal antibody. (Heat-induced epitope retrieval by 10mM citric buffer)



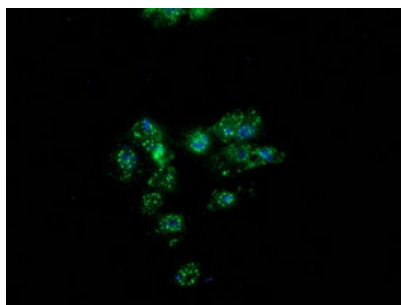
HEK293T cells transfected with either PON1 (Myc-DDK-tagged) overexpress plasmid (Red) or empty vector control plasmid (Blue) were immunostained by anti-PON1 antibody (M00516-5)



Flow cytometric Analysis of Hela cells



Flow cytometric Analysis of Jurkat cells



Anti-PON1 mouse monoclonal antibody (M00516-5) immunofluorescent staining of COS7 cells transiently transfected by pCMV6-ENTRY PON1.

Submit a product review to Biocompare.com

Submit a review of this product to Biocompare.com to receive a \$20 Amazon.com giftcard! Your reviews help your fellow scientists make the right decisions. Thank you for your contribution.



Anti-PON1 Mouse Monoclonal Antibody [Clone ID: OT12D4]

For Research Use Only. Not for use in diagnostic procedures.