

Anti-AFP/Alpha 1 Fetoprotein Rabbit Monoclonal Antibody

Catalog Number: M00522-1

About AFP

Dynamin-related GTPase required for mitochondrial fusion and regulation of apoptosis. May form a diffusion barrier for proteins stored in mitochondrial cristae. Proteolytic processing in response to intrinsic apoptotic signals may lead to disassembly of OPA1 oligomers and release of the caspase activator cytochrome C (CYCS) into the mitochondrial intermembrane space.

Overview

Product Name	Anti-AFP/Alpha 1 Fetoprotein Rabbit Monoclonal Antibody
Reactive Species	Human
Description	Boster Bio Anti-AFP/Alpha 1 Fetoprotein Rabbit Monoclonal Antibody catalog # M00522-1. Tested in WB, IHC, ICC/IF, IP, Flow Cytometry applications. This antibody reacts with Human.
Conjugate	FITC
Application	Flow Cytometry, IP, IF, IHC, ICC, WB
Clonality	Monoclonal AAOO-1
Formulation	Rabbit IgG in phosphate buffered saline, pH 7.4, 150mM NaCl, 0.02% sodium azide and 50% glycerol, 0.4-0.5mg/ml BSA.
Storage Instructions	Store at -20°C for one year. For short term storage and frequent use, store at 4°C for up to one month. Avoid repeated freeze-thaw cycles.
Host	Rabbit
Uniprot ID	P02771

Technical Details

Immunogen	A synthesized peptide derived from human AFP
Predicted Reactive Species	Human, Primate
Cross Reactivity	Detects ~20kDa. Does not cross-react with alphaB-crystallin, betaL-crystallin, ̢H- crystallin, gamma-crystallin, HSP25, HSP27 or HSP47 proteins.
Isotype	Rabbit IgG
Form	Liquid
Concentration	Actual concentration vary by lot. Use suggested dilution ratio to decide dilution procedure.
Purification	Affinity-chromatography

Suggested Dilutions

Dilute the sample so that the expected range of concentrations fall within the detection range of this kit.

If the expected range of concentration is unknown, a pilot test should be conducted to decide the optimal dilution ratio for your samples.

Some PubMed article(s) citing the expression level of this target are as follows:

Boster Bio's internal QC testing used:

WB 1:500-1:2000

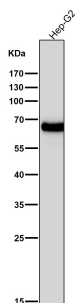
IHC 1:50-1:200

ICC/IF 1:50-1:200

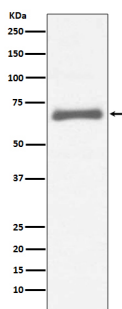
IP 1:50

FC 1:50

Anti-AFP/Alpha 1 Fetoprotein Rabbit Monoclonal Antibody (M00522-1) Images



All lanes use the Antibody at 1:5K dilution for 1 hour at room temperature.



Western blot analysis of AFP expression in HepG2 cell lysate.

5 Publications Citing This Product

1. PubMed ID: 26235702, Adipose tissue-derived mesenchymal stem cells differentiated into hepatocyte-like cells in vivo and in vitro
2. PubMed ID: 25576343, Extracellular regulated protein kinases 1/2 phosphorylation is required for hepatic differentiation of human umbilical cord-derived mesenchymal stem cells
3. PubMed ID: 29246405, Selective tropism of liver stem cells to hepatocellular carcinoma in vivo.

Visit bosterbio.com/anti-afp-rabbit-monoclonal-antibody-m00522-1-boster.html to see all 5 publications.

Submit a product review to Biocompare.com

Submit a review of this product to Biocompare.com to receive a \$20 Amazon.com giftcard! Your reviews help your fellow scientists make the right decisions. Thank you for your contribution.



Anti-AFP/Alpha 1 Fetoprotein Rabbit Monoclonal Antibody