

Anti-alpha 1 Fetoprotein (AFP) Mouse Monoclonal Antibody [Clone ID: OTI2A9]

Catalog Number: M00522-3

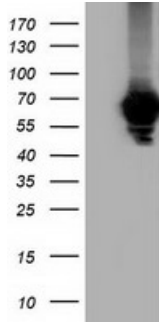
Overview

Product Name	Anti-alpha 1 Fetoprotein (AFP) Mouse Monoclonal Antibody [Clone ID: OTI2A9]
Reactive Species	Dog, Human, Monkey
Description	Boster Bio AFP (alpha-fetoprotein) mouse monoclonal antibody, clone OTI2A9 (formerly 2A9). Catalog# M00522-3. Tested in FC, IF, IHC, WB. This antibody reacts with Human, Monkey, Dog.
Application	Flow Cytometry, IF, IHC, WB
Clonality	Monoclonal OTI2A9
Formulation	PBS (PH 7.3) containing 1% BSA, 50% glycerol and 0.02% sodium azide.
Storage Instructions	Store at -20°C as received.
Host	Mouse
Uniprot ID	P02771

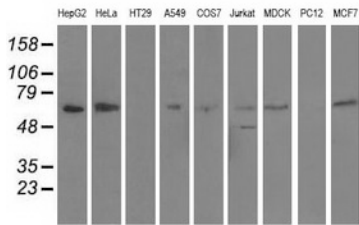
Technical Details

Immunogen	Full length human recombinant protein of human AFP (NP_001125) produced in HEK293T cell.
Isotype	IgG2b
Concentration	1 mg/ml
Purification	Purified from mouse ascites fluids or tissue culture supernatant by affinity chromatography (protein A/G)
Suggested Dilutions	Dilute the sample so that the expected range of concentrations fall within the detection range of this kit. If the expected range of concentration is unknown, a pilot test should be conducted to decide the optimal dilution ratio for your samples. Some PubMed article(s) citing the expression level of this target are as follows:

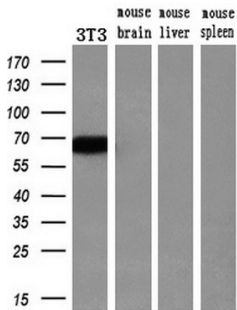
Anti-alpha 1 Fetoprotein (AFP) Mouse Monoclonal Antibody [Clone ID: OTI2A9] (M00522-3) Images



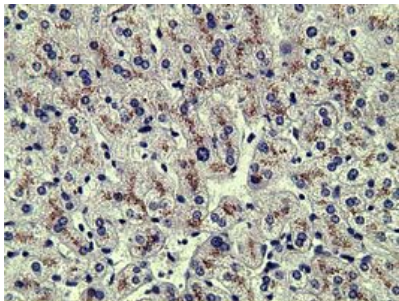
HEK293T cells were transfected with the pCMV6-ENTRY control (Left lane) or pCMV6-ENTRY AFP (Right lane) cDNA for 48 hrs and lysed. Equivalent amounts of cell lysates (5 ug per lane) were separated by SDS-PAGE and immunoblotted with anti-AFP.



Western blot analysis of extracts (35ug) from 9 different cell lines by using anti-AFP monoclonal antibody.

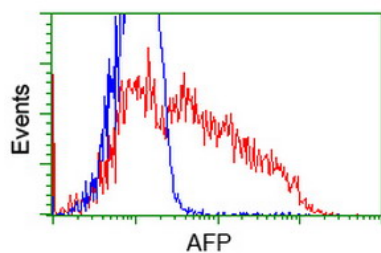


Western blot analysis of extracts (10ug) from a mouse cell line and 3 different mouse tissues by using anti-AFP monoclonal antibody (1:200).

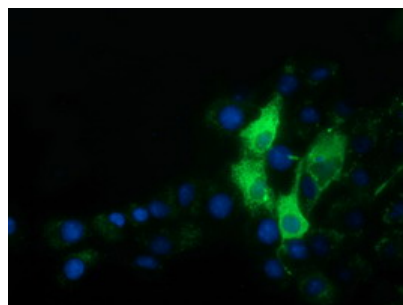
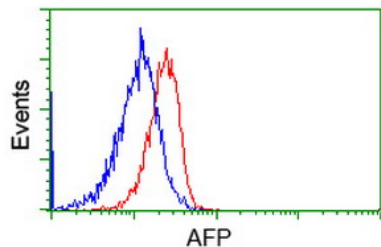


Immunohistochemical staining of paraffin-embedded Human liver tissue within the normal limits using anti-AFP mouse monoclonal antibody. (Heat-induced epitope retrieval by 10mM citric buffer)

HEK293T cells transfected with either AFP (Myc-DDK-tagged) overexpress plasmid (Red) or empty vector control plasmid (Blue) were immunostained by anti-AFP antibody (M00522-3)



Flow cytometric Analysis of Jurkat cells



Anti-AFP mouse monoclonal antibody (M00522-3)
immunofluorescent staining of COS7 cells transiently
transfected by pCMV6-ENTRY AFP.

Submit a product review to Biocompare.com

Submit a review of this product to Biocompare.com to receive a \$20 Amazon.com giftcard! Your reviews help your fellow scientists make the right decisions. Thank you for your contribution.



Anti-alpha 1 Fetoprotein (AFP) Mouse Monoclonal Antibody [Clone ID: OTI2A9]