

## Anti-STAT6 Rabbit Monoclonal Antibody

Catalog Number: M00523

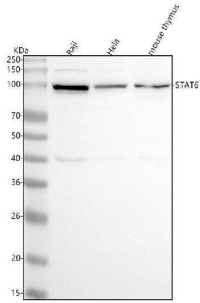
### Overview

Product Name	Anti-STAT6 Rabbit Monoclonal Antibody
Reactive Species	Human, Mouse
Description	Boster Bio Anti-STAT6 Rabbit Monoclonal Antibody catalog # M00523. Tested in WB, IHC, ICC/IF, IP applications. This antibody reacts with Human, Mouse.
Application	IP, IF, IHC, ICC, WB
Clonality	Monoclonal CFH-19
Formulation	Rabbit IgG in stabilizing components, phosphate buffered saline, pH 7.4, 150mM NaCl, 0.02% sodium azide and 50% glycerol. *This antibody is supplied in a stabilized formulation. Compatibility with conjugation reactions depends on the chemistry of the conjugation method used. For conjugation methods that are not compatible with the stabilizing components present in this formulation, a carrier-free antibody format is required.
Storage Instructions	Store at -20°C for one year. For short term storage and frequent use, store at 4°C for up to one month. Avoid repeated freeze-thaw cycles.
Host	Rabbit
Uniprot ID	P42226

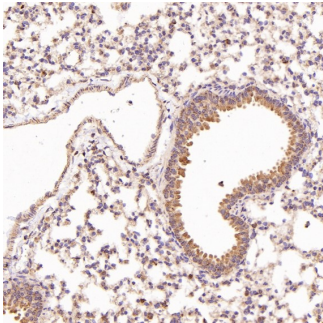
### Technical Details

Immunogen	A synthesized peptide derived from human STAT6
Isotype	Rabbit IgG
Form	Liquid
Concentration	0.5mg/ml
Purification	Affinity-chromatography
Suggested Dilutions	WB 1:500-2000 IHC 1:50-200 ICC/IF 1:50-200 IP 1:20

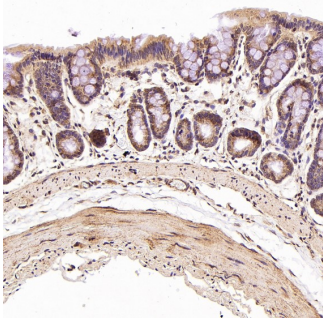
## Anti-STAT6 Rabbit Monoclonal Antibody (M00523) Images



Western blot analysis of STAT6 using anti-STAT6 antibody (M00523). Electrophoresis was performed on a 5-20% SDS-PAGE gel at 70V (Stacking gel) / 90V (Resolving gel) for 2-3 hours. The sample well of each lane was loaded with 30 ug of sample under reducing conditions. Lane 1: human Raji whole cell lysates, Lane 2: human Hela whole cell lysates, Lane 3: mouse thymus tissue lysates. After electrophoresis, proteins were transferred to a nitrocellulose membrane at 150 mA for 50-90 minutes. Blocked the membrane with 5% non-fat milk/TBS for 1.5 hour at RT. The membrane was incubated with rabbit anti-STAT6 antigen affinity purified monoclonal antibody (Catalog # M00523) at 1:500 overnight at 4°C, then washed with TBS-0.1%Tween 3 times with 5 minutes each and probed with a goat anti-rabbit IgG-HRP secondary antibody at a dilution of 1:5000 for 1.5 hour at RT. The signal is developed using an Enhanced Chemiluminescent detection (ECL) kit (Catalog # EK1002) with Tanon 5200 system. A specific band was detected for STAT6 at approximately 100 kDa. The expected band size for STAT6 is at 94 kDa.

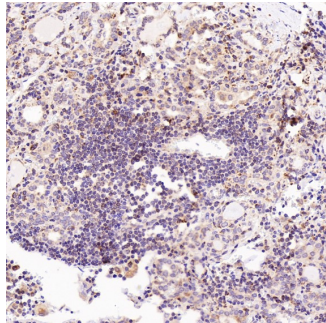
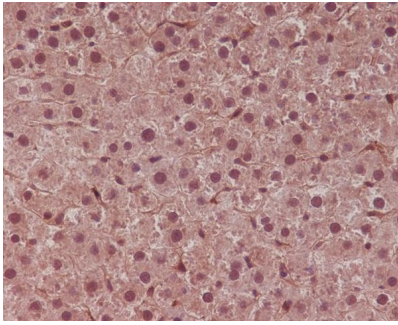


Immunohistochemical analysis of paraffin-embedded Mouse lung, using the Antibody at 1:100 dilution.

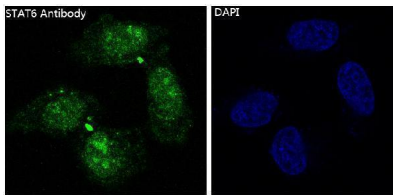


Immunohistochemical analysis of paraffin-embedded Rat stomach, using the Antibody at 1:100 dilution.

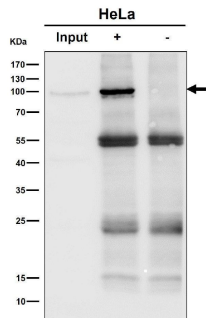
Immunohistochemical analysis of paraffin-embedded rat liver, using STAT6 Antibody.



Immunohistochemical analysis of paraffin-embedded Human thyroid cancer, using the Antibody at 1:300 dilution.



Immunofluorescent analysis of HeLa cells, using STAT6 Antibody .



Immunoprecipitate (IP) analysis using the Antibody at 1:50 dilution. (wb at 1:1K dilution)

## Submit a product review to [Biocompare.com](https://www.biocompare.com)

Submit a review of this product to [Biocompare.com](https://www.biocompare.com) to receive a \$20 Amazon.com giftcard! Your reviews help your fellow scientists make the right decisions. Thank you for your contribution.



Anti-STAT6 Rabbit Monoclonal Antibody

For Research Use Only. Not for use in diagnostic procedures.